

What's



WINTER PROGRAMME
JUL - SEP 2025

NATHAN HOMESTEAD
PUKEPUKE

Manurewa
Local Board
Auckland Council



NAU MAI, HAERE MAI

As the cooler months settle in, we're thrilled to share our Winter Programme, packed with creativity, connection, and community spirit to keep you inspired through the season.

This term, we continue to offer your favourite classes and workshops that are sure to inspire. Whether you're trying something for the first time, getting back into a much-loved hobby, or looking for fun with friends and whānau. From clay and jewellery to raranga, yoga, and kids' art, there's something for everyone.

Looking ahead, our vibrant School Holiday Programme kicks off Monday 30 June - filled with hands-on activities, creative workshops, and before-and-after care to support busy families. If you're not convinced, go check out our social media to see what we get up to.

On 5 July we welcome new and returning stallholders to fill our space during our annual Winter Creative Market. Be sure to pop down and support your local artists, makers and even bakers (see page 11).

We look to wrap up our Pop-Up Exhibition series with 'A journey into Minhwa' - a traditional Korean painting style that flourished from the 17th to 19th centuries. While our galleries undergo restoration, a rotating showcase of artists have been exhibited in the Quiet Room at the Manurewa Library (see page 13).

We're also proud to support a thriving line-up of community-led events, like the Repair Café and local craft groups that bring people together and celebrate Manurewa's vibrant talent in a space where they can connect and create.

Follow us on Facebook and Instagram to stay up to date, or pop in and say hello!

Ngā mihi nui,
The team at Nathan Homestead Pukepuke

Nathan Homestead Pukepuke is an Auckland Council operated arts and culture facility, proudly supported by the Manurewa Local Board

Cover Image: Busan Minhwa association from Korea

TABLE OF CONTENTS

| | |
|------------------------------|----|
| NATHAN HOMESTEAD RESTORATION | 3 |
| SCHOOL HOLIDAY PROGRAMME | 5 |
| EVENTS | 11 |
| EXHIBITIONS | 13 |
| CLASSES | 15 |
| COMMUNITY | 21 |
| HIRE | 27 |
| MAP | 28 |
| OFF-SITE PARKING | 29 |
| HISTORY | 30 |
| ENROLMENT FORM | 32 |



NATHAN HOMESTEAD PUKEPUKE RESTORATION

Auckland Council is undertaking a restoration of Nathan Homestead Pukepuke to ensure this historically significant asset is available for future generations. Construction commenced in July 2024, and throughout the construction period the main Nathan Homestead building will be closed for an estimated period of 12 months.

We look forward to continuing to serve you from our temporary base and welcoming you back into the newly refurbished building this year. The team and most of our regular programmes are now based at the adjacent Nathan Homestead Theatre and outbuildings.

The seismic upgrade works carried out will include strengthening to future-proof against potential earthquakes essential repairs, maintenance - including fire safety, emergency lighting upgrades and accessibility enhancements including the installation of a lift.

Stay in touch for updates by liking and following our Facebook and Instagram pages. We look forward to seeing you all soon!

Ngā mihi nui,
The team at Nathan Homestead Pukepuke.





School holidays





SCHOOL HOLIDAY PROGRAMME

30 JUNE - 11 JULY

Nathan Homestead Pukepuke offers fun, active and creative school holiday programme for tamariki aged 5–13 years. Our sessions are designed to inspire curiosity, build confidence, and keep kids engaged through hands-on experiences and exciting adventures.

Each day features a mix of themed activities, including cooking, sports, arts and crafts, and outdoor play in our beautiful park surroundings. We also offer specialist workshops in visual and performing arts for young creatives aged 8–13, ranging from painting and pottery to drama and stage performance. These workshops provide high-quality arts tutoring in a supportive and welcoming environment.

The programme is approved by the Ministry of Social Development, and WINZ subsidies are available for up to 50 hours per week.

check out what we
have for you! →

WEEK ONE: 30 JUNE – 4 JULY
ALL SESSIONS RUN
9AM – 3PM

Programmes run Monday to Friday, 9am–3pm
(excluding public holidays), for children aged
5–13 unless stated otherwise.

MONDAY

30 JUNE

MIX ‘N’ MATCH 1.0

Pick and mix your favourite activities on the day.

Session Code: **A1** Fun Day

Suitable for: Ages 5+

Cost: \$30

CLAY 1.0
with Jillian V

Spend 4 hours designing and creating a majestic moon mug and a radiant rocket.

Session Code: **A2** Arts Class

Suitable for: Ages 8+

Cost: \$50

TUESDAY

1 JULY

POPCORN & MOVIE DAY

Walk the red carpet and enjoy a day where the magic of motion pictures is spotlighted.

Session Code: **B1** Theme Day

Suitable for: Ages 5+

Cost: \$30

CREATIVE SEWING
with Heather Black

Come along to a day of fabulously fun creative sewing. All sewing machines and materials are provided.

Session Code: **B2** Arts Class

Suitable for: Ages 8+

Cost: \$40

WEDNESDAY

2 JULY

MIX ‘N’ MATCH 2.0

Pick and mix your favourite activities on the day.

Session Code: **C1** Fun Day

Suitable for: Ages 5+

Cost: \$30

BUTTERFLY CREEK

Explore the wonderland of Butterfly Creek! Immerse yourself in the tropical butterfly house and feel the brush of fluttering butterflies, take a ride on the train and more.

Session Code: **C2** Day Trip

Suitable for: Ages 7+

Cost: \$50



just for your information →

All-day bookings include a supervised lunch break from 11:30am–12:30pm, please pack a healthy lunch.

THURSDAY

3 JULY

WINTER INDOOR OLYMPICS

Go for gold without stepping outside, with loads of exciting Olympics themed events set indoors. Let the games begin.

Session Code: D1 Fun Day

Suitable for: Ages 5+

Cost: \$30

FRIDAY

4 JULY

TWIST IT UP

Let's twist again with top of the dial get up and go playactivities followed by an ultra upbeat disco.

Session Code: E1 Theme Day

Suitable for: Ages 5+

Cost: \$30

TOON IN

with Siniva Williams

Get a wonderful introduction into creating your own cartoon creations. Design a cool character and work on a super 4 panel comic strip!

Session Code: D2 Arts Class

Suitable for: Ages 8+

Cost: \$40



joining us for week two?
check out the next page

WEEK TWO: 7 JULY – 11 JULY

ALL SESSIONS RUN 9AM – 3PM

Programmes run Monday to Friday, 9am–3pm
(excluding public holidays), for children aged
5–13 unless stated otherwise.

MONDAY

7 JULY

MATARIKI

Celebrate Matariki with a day devoted to the theme of wai (water). Visit the Water Tower at David Nathan Park then construct your very own model water tower.

Session Code: F1 Theme Day

Suitable for: Ages 5+

Cost: \$30

CLAY 2.0

with Siriporn Falcon-Grey

Spend 4 hours designing and creating a terrific 3-D coral sculpture.

Session Code: F2 Arts Class

Suitable for: Ages 8+

Cost: \$50

KARATE KID LEGENDS

Journey to the Event Cinemas in Manukau followed by a picnic in the park at David Nathan Park.

Session Code: F3 Day Trip

Suitable for: Ages 7+

Cost: \$50

TUESDAY

8 JULY

WHAT YOU GOT COOKIN'?

Treat yourself to a stirring culinary day and whip up some mouth-watering tasty treats. Delish!

Session Code: G1 Theme Day

Suitable for: Ages 5+

Cost: \$30

GIGGLE GOBBLE GUMMY 4-DAY COMEDY-DRAMA WORKSHOP

with Vic Leilua

Take the cue and perform in a short comedy play on Friday. Experience the thrill of putting on a show and learn some top tips about stagecraft.

Session Code: G2 Arts Class

Suitable for: Ages 8+

Cost: \$160

MAKING MONSTERS WITH MY FRIENDS

with Renee Bevan

Bring the weird and wonderful creatures of your imagination to life. How many monstrous masterpieces can you make?

Session Code: G3 Arts Class

Suitable for: Ages 8+

Cost: \$50



just for your information →

All-day bookings include a supervised lunch break from 11:30am–12:30pm, please pack a healthy lunch.

WEDNESDAY

9 JULY

MIX 'N' MATCH 3.0

Pick and mix your favourite activities on the day.

Session Code: H1 Fun Day

Suitable for: Ages 5+

Cost: \$30

THURSDAY

10 JULY

MIX 'N' MATCH 4.0

Pick and mix your favourite activities on the day.

Session Code: I1 Fun Day

Suitable for: Ages 5+

Cost: \$30

FRIDAY

11 JULY

BLINGY

A day dedicated to making you chuckle, chortle, grin and guffaw. In the afternoon you can laugh out loud at the short play Giggle Gobble Gummy live on stage.

Session Code: J1 Fun Day

Suitable for: Ages 5+

Cost: \$40



FURTHER INFORMATION

Before & After Care:

Free before care is available from 8–9am.
After care runs 3–5pm at \$5 per hour.

Child Safety: Nathan Homestead Pukepuke provides a safe, high-quality OSCAR approved school holiday programme with experienced staff and tutors. There is a staff/child ratio of 1:10 onsite and 1:8 for day trips.

Payment can be made with cash, eftpos or automatic phone payment. Please email your enrolment forms only if you are making a phone payment.

The full course fee must be paid in advance and at the time of enrolment. Your booking is confirmed once payment is made.

WINZ subsidies are available on application.

ellents





CREATIVE MARKET (WINTER)

Join us at Nathan Homestead Pukepuke on Saturday 5 July for our Winter Creative Market! Come in out of the cold and check out the array of talented artists, makers and stallholders across the many different rooms at Nathan Homestead. Whether you are searching for a gift for someone, or even a treat for yourself, you are sure to find something special.

Where: Nathan Homestead Pukepuke

Date: Saturday 5 July

Time: 10am - 2pm

Cost: Free

exhibitions



While our galleries undergo restoration, a rotating showcase of artists are being exhibited in the Quiet Room at the Manurewa Library.

Where: Quiet Room - Manurewa Library
7 Hill Road, Manurewa

Time: 9am - 5pm (Monday — Saturday)



A JOURNEY INTO MINHWA KOREAN TRADITIONAL FOLK ART

Step into the vibrant world of Minhwa, a traditional Korean painting style that flourished from the 17th to 19th centuries. This colourful and expressive art form captures heartfelt wishes for joy and prosperity using bold colours, playful imagery and symbolic storytelling. This exhibition offers a rare opportunity to view these unique works, brought directly from Korea.

Experience the beauty, humour and deep cultural significance of Minhwa, where each painting reflects the hopes and dreams of the past, brought vividly to life in the present.

Date: 9 July - 11 August



PHOENIX COLOUR PENCIL GROUP

This exhibition showcases a selection of works by the Phoenix Colour Pencil Group, a collective of artists who meet weekly to create, connect, and support each other's creative journeys.

Formed around a shared interest in coloured pencil drawing, the group fosters a welcoming environment for artistic growth and expression. Each artist brings their own unique style and perspective, resulting in a diverse and engaging collection of work.

Come along and enjoy this celebration of creativity, connection, and community.

Date: 12 August - 15 September

Classes

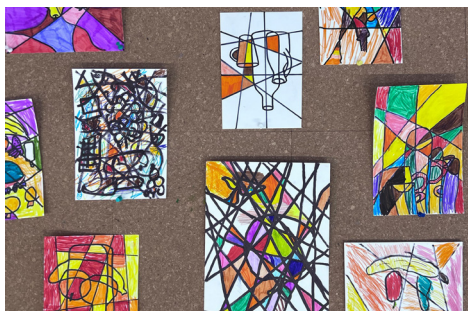


Nathan Homestead offers a range of creative art classes and workshops throughout the year, for all ages and abilities. From workshops to term-long programmes there is an extensive range of activities to choose from, with something for everyone.

please read →

Enrolment policy: A makeup class or a refund will be credited if a class is cancelled in full, or in part. No refund will be made if you withdraw from a class 7 days or less prior to the starting date. In cases of withdrawal prior to this, refunds will incur a \$15 administration fee.

Cancellation: We reserve the right to cancel or postpone any class that does not reach minimum numbers. All details are accurate at the time of printing, but are subject to change.



JUNIOR ART

Children will explore a vibrant mix of artistic techniques including painting, printing, sculpting, collage and more. Each session encourages self-expression through the use of a wide variety of materials—think scissors, glue, paintbrushes, pencils, felt tips, and more.

This dynamic and engaging class is perfect for young creators eager to make, play, and discover their own unique artistic style. Fun, messy, and full of colour—get ready to create!

Where: Meeting Room

Date: Mondays, 21 July - 15 September or
Tuesdays, 22 July - 16 September

Time: 3.45pm - 5pm

Cost: \$90

No. classes: 9 weeks

Suitable for: 5 - 8 years

Max people: 11

Tutor: Renee Bevan



CERAMIC CRITTERS

Get creative with clay in this hands-on ceramics class designed especially for kids! Children will bring their ideas to life as they explore the fun of clay hand-building—shaping, sculpting, and experimenting with texture to create their own 3D critters and creatures.

Each session guides young artists through the process, from drawing out ideas to forming them with clay using a variety of techniques.

Includes 5kg of clay and firing.

Where: Creative Studio

Date: Mondays, 21 July - 8 September or
Tuesdays, 22 July - 9 September

Time: 3.45pm - 5pm

Cost: \$130

No. classes: 8 weeks

Suitable for: 8 - 13yrs

Max people: 12

Tutor: Siriporn Falcon Grey (Mondays)

Jillian V (Tuesdays)

To secure your spot and avoid class cancellations, please register well in advance.

Register: Call us on **09 267 0180** or email nathanhomestead@aucklandcouncil.govt.nz



CONTEMPORARY JEWELLERY EVENING CLASS

Beginners will learn the basics of jewellery-making and improve their skills as they progress through their projects. Skills and techniques include sawing, piercing, forming, carving, soldering along with many other techniques.

Intermediate and advanced students can experiment in a supportive learning environment, where skills and ideas can be put into practice under expert guidance.

A \$40 materials pack will be available to purchase on the first day.

Where: Workshop

Dates: Mondays, 21 July - 8 September or
Tuesdays, 22 July - 9 September

Time: 6.30pm - 9pm

Cost: \$195

No. classes: 8 weeks

Suitable for: Adults

Max people: 9

Tutor: Renee Bevan



CLAY IN THE DAY

Have you ever wanted to try pottery? This course is suitable for beginners and can be tailored to suit those who have some experience working with clay.

Includes 5kg of clay and firing.

Please bring your own tools. A tool package is available for \$20 to purchase from the tutor.

Where: Creative Studio

Date: Mondays, 21 July - 8 September

Time: 10am - 12pm

Cost: \$225

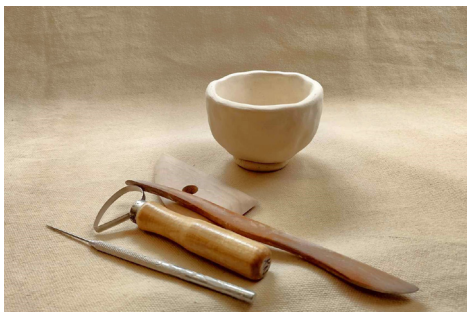
No. classes: 8 weeks

Suitable for: Adults

Max: 10

Tutor: Siriporn Falcon Grey

To secure your spot and avoid class cancellations, please register well in advance.



CLAY CULTURE EVENING CLASS

Explore the exciting possibilities of handbuilding with clay. Participants will learn to use a range of building techniques, increasing knowledge in working with clay and help hone skills to make beautiful ceramics.

This evening course is suitable for beginners and can be tailored to suit those who have some experience working with clay.

Includes 5kg of clay and firing.

Please bring your own tools. A tool package is available for purchase from the tutor directly.

Where: Creative Studio

Date: Tuesdays, 22 July - 9 September

Time: 6pm - 8pm

Cost: \$225

No. classes: 8 weeks

Suitable for: Adults

Max people: 10

Tutor: Jillian V



FLAX WEAVING WITH ANNIE

Come and begin your harakeke journey! Learn tikanga connected to harvesting, preparing and treating harakeke so you can make beautiful projects.

Flax dyeing and basic weaving skill can be enhanced into creating valued gifts or advanced into a waikawa. At the end of the workshop you will get to take home a small and a medium size ketes.

Please bring an old bath towel and scissors.

Where: Theatre

Date: Saturday, 2 August & 9 August

Time: 10am - 2pm

Cost: \$40

No. classes: 2

Suitable for: Beginners to advanced

Max people: 12

Tutor: Annie Ah Mu



TASTER POTTERY WORKSHOPS

1. Slab it Up - This workshop will teach you how to make a mug using the slab building technique. Finish off your one of a kind piece by creating your own individual markings and textures. Your mug will be fired and ready for pick up at a later date.

2. Pinch & Poke - This workshop will teach you how to create a bowl for a salad, cereal, or any of your favourite snacks! We'll use the pinch pot technique with emphasis on various textures and forms. Your handmade bowl will be fired and ready for pick up at a later date.

Both workshops include clay and firing.

Where: Workshop

Dates: **Slab it Up** - Saturday 2 August
Pinch & Poke - Saturday 16 August

Time: 10am - 12pm

Cost: \$75 (per workshop)

Suitable for: Beginners & 8yrs+

Max people: 9

Tutor: Siriporn Falcon Grey

✳ **Register:** falcongreceramics.com



FREE UKULELE WORKSHOP

Ukulele evenings are for anyone wanting to play. Bring your ukulele, come along and enjoy the evening. We will have you playing songs within two sessions. All welcome.

Please bring your own ukulele.

Where: Creative Studio

Date: Thursday, 28 August & 11 September

Time: 6pm - 7pm

Cost: Free

No. classes: 2

Suitable for: Adults & 12yrs+

Max people: 12

Tutor: Uke Lounge

To secure your spot and avoid class cancellations, please register well in advance.



SENIOR YOGA

This class is aimed at gently maintaining and improving the body's mobility, strength, and flexibility. It is a traditional style class that includes postures, breathing and relaxation.

Please bring a yoga mat, blanket and small cushion (optional).

Where: Theatre

Date: Tuesdays, 22 July - 9 September

Time: 9.30am - 11am

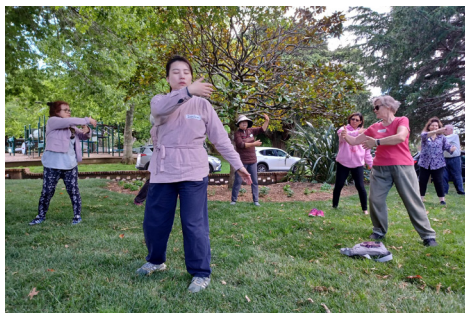
Cost: \$50

No. classes: 8 weeks

Suitable for: Seniors aged 55 +

Max people: 18

Tutor: Nicola Schwarz



TAI CHI

Healthy body, mind and spirit. Come and experience the ancient Chinese art of Tai Chi for relaxation, balance and well-being. Discover how to apply the wisdom of Tai Chi to bring harmony to your everyday life.

Registration required.

Where: Theatre

Date: Saturdays,
19 July, 23 August, 13 September

Time: 9.30am - 11am

Cost: Free

Suitable for: Adults

Max people: 18

Tutor: Shin Ling

IMPORTANT

classes will need to be paid in full before we can confirm your place in it

Community



We're proud to support a diverse range of community-led events and classes that bring people together, celebrate creativity, and foster connection.

From the Repair Café and creative clubs like the Manurewa Potters, Patchwork Quilters, and the South Auckland Spinners and Weavers, to the joyful sounds of Uke Lounge and the confidence-building Manurewa TALK Toastmasters - there's something for everyone.

Move your body with Yoga with Kaye or learn Latin rhythms in our fun Bachata and Salsa dance classes hosted by South Auckland Latin Dance. We're also now home to Safari Playgroup, a free and welcoming space for children aged 0–5 and their caregivers, especially migrant and refugee families.

Come explore, participate, and be part of the vibrant life at Nathan Homestead Pukepuke!



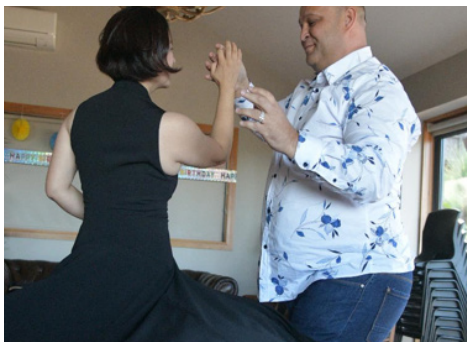
SAFARI PLAYGROUP

Safari Manurewa Multicultural Playgroup is a free playgroup for parents with children aged 0-5. All are welcome but we specifically cater to migrant and refugee families. We offer English classes to parents and a van transport service.

We provide a great variety of toys and play activities to keep our children engaged and learn through play. We enjoy exploring the outdoors at Nathan Homestead, messy play, mat time and much more.

- Where:** Theatre
- Date:** Every Mon, Wed, Fri, during school terms
- Time:** 9am - 12:30pm
- Cost:** Free
- Suitable for:** Mothers and Children aged 0-5years.
- Register:** safari@belong.org.nz

Check out what else
you can get involved in,
right here in Manurewa →



BACHATA & SALSA

Our dance academy will introduce you to the basics of Bachata which is a Caribbean and Salsa style of dance that originated in Cuba and Puerto Rico. If you have never danced before, our basic Bachata class will be perfect for you.

And if you are wanting to brush up on getting your basic steps right, then this class is also perfect for you.

Come join us for this new 8 week back to back course in Bachata and Salsa hosted by South Auckland Latin Dance.

No partner required.

Where: Theatre

Date: Every Thursday

Time: 7.30pm - 8.30pm

Cost: \$10 per session

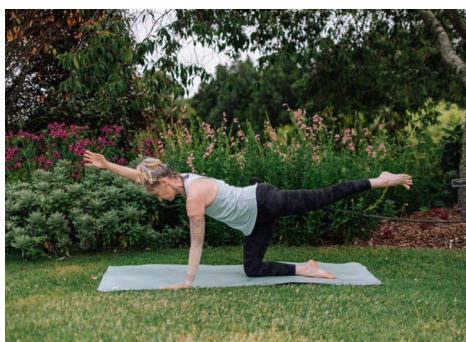
No. classes: 8 weeks

Suitable for: Adults

Max people: 16

Tutor: John Farrar

Register: 022 1827 454



YOGA WITH KAYE

Improve your strength, energy, breathing, posture, flexibility, balance and coordination. Reduce stress and help yourself sleep better. Intermediate level, mixed style mostly Vinyasa.

Bring your yoga mat, 2 yoga blocks (if you have them), a long strap and a blanket.

Where: Theatre

Date: Beginners - Mondays,
14 July - 15 September

Intermediate - Thursdays,
17 July - 18 September

Time: Beginners - 6.30pm - 7.30pm

Intermediate - 5.30pm - 7pm

Cost: Beginners - \$150 / \$20 casual

Intermediate - \$170 /\$20 casual or zoom

No. classes: 8 weeks

Suitable for: Beginners & Intermediate

Max people: 12

Tutor: Kaye Manson

Register: 027 354 2358 or klmanson@xtra.co.nz,
www.facebook.com/yogawithkayemanson



REPAIR CAFE

Repair Cafe is a fantastic community initiative that runs every third Saturday of the month in our theatre. Thanks to our amazing volunteer community and the DEANZ team.

This Repair Cafe is aimed at minimising waste and keeping much loved items in action. Items that can be repaired include smaller furniture, toys, bikes, clothing, small appliances, laptops and other electronics.

Can you volunteer your skill set to our Repair Café community? We would love to hear from anyone who would like to be a part of this great community-led initiative.

Where: Theatre

Date: Saturdays,
19 July, 16 August, 20 September

Time: 11:30am - 2pm

Cost: Free



UKE LOUNGE

Uke Lounge is a fun and welcoming local ukulele group for experienced players. The group runs ukulele workshops every term for beginners (see page 20).

Meeting twice a month at Nathan Homestead Pukepuke. New members are always welcome, so come by with your own ukulele and join in.

Registration essential.

Where: Creative Studio

Date: The first and third Thursday
of every month

Time: 7pm - 8.30pm

Cost: Free

Suitable for: Intermediate & Advanced

Tutor: Gary Matthews

Contact: gary.matthews2910@gmail.com



MANUREWA POTTERS CLUB

Manurewa Potters Club formed in 1974 have run workshops and exhibitions with local and international ceramicists in South Auckland.

Join local ceramic artists and potters as they gather together to create. Come along to our club meetings every Wednesday in the Creative Studio.

Where: Creative Studio

Date: Every Wednesday during school terms

Time: 10am - 12.30pm

Website: facebook.com/Manurewa-Potters

Suitable for: Adults

Register: (09) 298 6463



PATCHWORK QUILTING CLUB

Join the patchwork and quilting club where you can meet up with friends and share the basics of piecing methods and skills throughout the term. Work on various projects including hand sewing techniques and also making bags.

This is a small group which donates quilts to Sweet Louise, an organisation that helps women and men who have breast cancer. This group is suitable for beginners and more advanced practitioners.

Where: Meeting Room

Date: Every Tuesday during school terms

Time: 1pm - 3pm

Cost: \$29 or \$3 per class

No. classes: 9 weeks

Suitable for: Beginners - Advanced

Max people: 12

Register: sycoghlan@xtra.co.nz



SOUTH AUCKLAND SPINNERS AND WEAVERS

Join local spinners and weavers as they gather together to make and create. With opportunities to learn new techniques, this group is suitable for beginners and more advanced practitioners.

Where: Meeting Room

Date: Every Tuesday during school terms

Time: 10.30am - 12.30pm

Cost: \$20 a school term

Suitable for: Adults

Register: Isobel on 021 264 4772 or
southaucklandspinnersweavers@gmail.com



MANUREWA TALK TOASTMASTERS

Manurewa T.A.L.K Toastmasters offers a diverse, supportive and fun environment to help you improve public speaking skills and develop valuable skills such as leadership, active listening, evaluation, confidence building and personal growth.

Come visit us, no invitation required!

Where: Meeting Room

Date: The second and fourth
Thursday of every month

Time: 7.15pm

Suitable for: Beginners & Intermediate

Register: talk@d112tm.org.nz

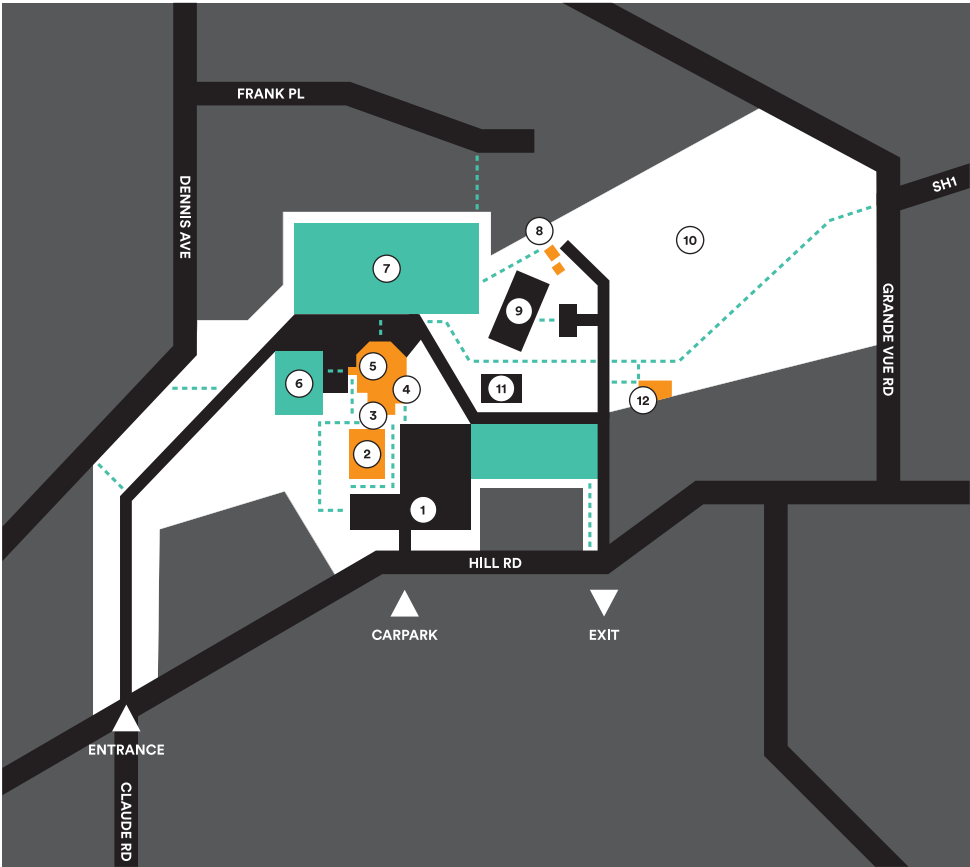


hire

Please be aware that due to the restoration work on Nathan Homestead Pukepuke and our relocation, the availability of the Theatre and Meeting Rooms will be on reduced availability. Please contact our team for more information – thank you for your understanding!

SITE MAP

NATHAN HOMESTEAD
PUKEPUKE



KEY

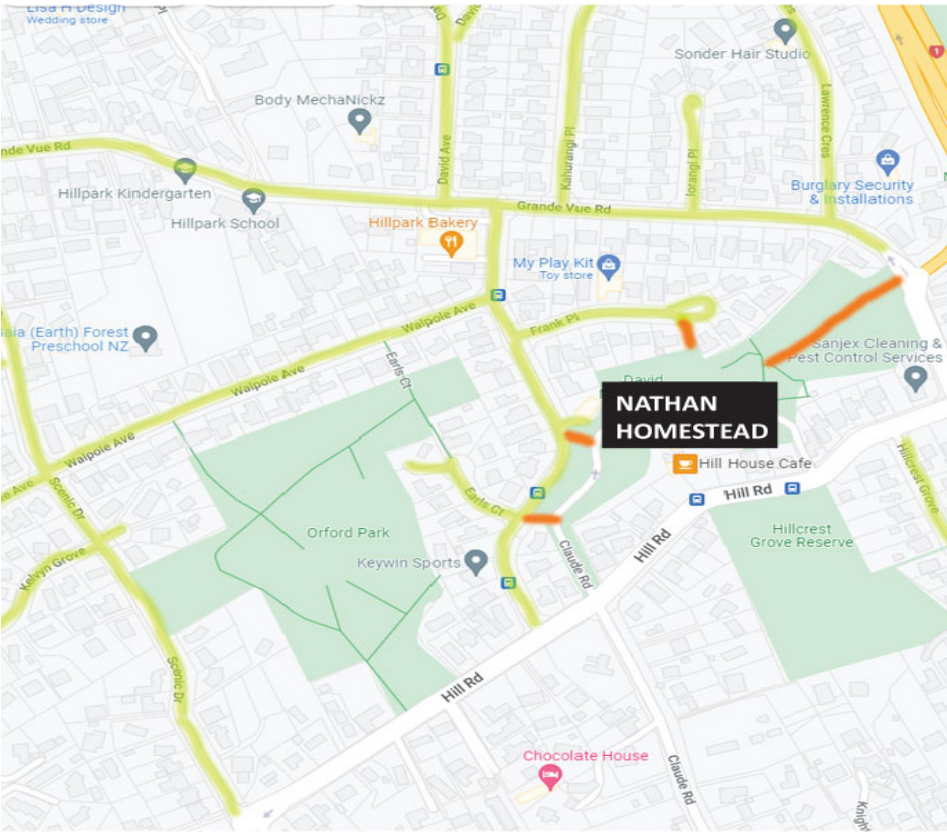
- DAVID NATHAN PARK
- PAVED AREAS
- LAWNS
- BUILDINGS
- PEDESTRIAN ACCESS



LOCATIONS

- | | | | | | |
|---|------------------------|---|------------------------|----|-------------|
| 1 | CAR PARK | 4 | CLOSED FOR RESTORATION | 10 | BUSH |
| 2 | THEATRE | 5 | CLOSED FOR RESTORATION | 11 | PLAYGROUND |
| | MEETING ROOM | 6 | CROQUET LAWN | 12 | WATER TOWER |
| | CREATIVE STUDIO | 7 | WALLED GARDEN | | |
| | OFFICE | 8 | ARTIST STUDIOS | | |
| 3 | CLOSED FOR RESTORATION | 9 | TENNIS COURT | | |

OFF-SITE PARKING

Parking in our NH carpark is limited. Fortunately we have several access points that link our facility to our surrounding side streets. Parking in one of these quiet streets is a great hassle-free option, with connecting paths directly into our grounds.



-  Access paths into our grounds
-  Side street parking available

A BRIEF HISTORY

The family firm of L.D. Nathan and Co. was started at Kororāreka in the Bay of Islands in 1840 by David Nathan, having left England to settle in the Antipodes. In 1841 he moved to Auckland where he married and developed a successful trading and textile business. The Nathan family have been highly influential in the establishment of New Zealand's Jewish community and many public services we enjoy today.

In 1910, David Nathan and his wife Simone built their summer residence in Manurewa and named the property 'The Hill'. The original wooden villa was destroyed by fire in 1923 and a new permanent residence was rebuilt on the same site in 1925. It included a large estate with a working farm, extensive rose gardens, native bush, ponds and a Norman style water tower, an iconic feature of Manurewa.

In 1964, with the development of the Southern Motorway, the estate was sold to accommodate residential growth in South Auckland. The land around the Nathan home was developed as the

Hillpark subdivision, while David Nathan Park and Homestead were held as public assets at the request of the Nathan family. The Nathan House was transformed to accommodate the mayor's office and additional buildings were brought on-site for staff and visitor services. In 1978 Nathan Homestead was handed back to the community as a council-run arts and culture centre.

In 2015 major renovation work commenced to improve the services and unique heritage features of the site, to ensure the centre was able to support the growing needs of our community. In 2017, Te Ākitai Waiohū gifted the name Pukepuke (hilly) to David Nathan Park and Homestead, referring to their ancestor, Īhaka Takanini's description of his land when it was sold to the Crown in 1842, a block that included the David Nathan Park. This name further acknowledges 'The Hill', a name affectionately used by the Nathan family for their home in Manurewa, and recognises the contributions of mana whenua and the Nathan family.



ENROLMENT FORM

NATHAN HOMESTEAD PUKEPUKE CLASS ENROLMENT FORM

SURNAME: **FIRST NAME:**

CHILD'S NAME(S):

ADDRESS:

EMAIL:

POSTCODE: **PHONE NUMBER:**

CLASS TITLE:

SIGNATURE:

JOIN OUR MAILING LIST ☐

If you wish to receive regular updates on our art classes, programmes, events and school holiday programmes, please tick in the white box above.

Payment can be made with eftpos, credit card or phone payment. The full course fee must be paid at the time of enrolment.

This form must be completed and returned before your space can be secured in one of our classes.

Return completed form to:
nathanhomestead@aucklandcouncil.govt.nz
or 70 Hill Road, Manurewa, 2102

Enrolment policy: A makeup class or a refund will be credited if a class is cancelled in full, or in part. No refund will be made if you withdraw from a class 7 days or less prior to the starting date. In cases of withdrawal prior to this, refunds will incur a \$15 administration fee.

Cancellation: We reserve the right to cancel or postpone any class that does not reach minimum numbers. All details are accurate at the time of printing, but are subject to change.





get in touch!

Address: 70 Hill Rd, Manurewa, Auckland, 2102

Opening Hours: Monday - Friday: 9am - 5pm
Weekends and public holidays: Closed
(Unless there is an event/programme on)

Access: Most areas are wheelchair accessible

Phone: 09 267 0180

Email: nathanhomestead@aucklandcouncil.govt.nz

Facebook.com/NathanHomesteadAkl

Instagram.com/Nathan.Homestead/

#nathanhomestead

NATHAN HOMESTEAD
PUKEPUKE

