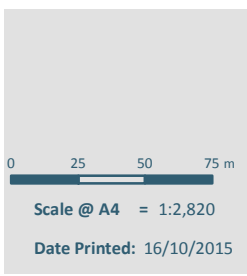


Maps of alcohol bans in the Waiheke Local Board area

Map number	Alcohol ban area	Operative time	Commencement
1	Oneroa Town Centre	24 hours, 7 days a week	31 October 2015
2	Miami Avenue car park	24 hours, 7 days a week	31 October 2015
3	131-133 Ocean View Road, Oneroa	10pm to 7am daylight saving and 7pm to 7am outside	31 October 2015
4	Anzac Reserve - Waiheke Island	10pm to 7am daylight saving and 7pm to 7am outside	31 October 2015
5	Belle Terrace Foreshore Reserve	10pm to 7am daylight saving and 7pm to 7am outside	31 October 2015
6	Burrell Ocean View Walkway	10pm to 7am daylight saving and 7pm to 7am outside	31 October 2015
7	Citrus Corner	10pm to 7am daylight saving and 7pm to 7am outside	31 October 2015
8	Garratt Road Access way	10pm to 7am daylight saving and 7pm to 7am outside	31 October 2015
9	Homersham Reserve	10pm to 7am daylight saving and 7pm to 7am outside	31 October 2015
10	Matapana Reserve	10pm to 7am daylight saving and 7pm to 7am outside	31 October 2015
11	Oneroa Beach	10pm to 7am daylight saving and 7pm to 7am outside	31 October 2015
12	Onetangi Beach Strand	10pm to 7am daylight saving and 7pm to 7am outside	31 October 2015
13	Onetangi Sports Park	10pm to 7am daylight saving and 7pm to 7am outside	31 October 2015
14	Palm Beach Reserve	10pm to 7am daylight saving and 7pm to 7am outside	31 October 2015
15	Te Huruhi Bay Reserve	10pm to 7am daylight saving and 7pm to 7am outside	31 October 2015
16	Third Reserve	10pm to 7am daylight saving and 7pm to 7am outside	31 October 2015
17	Tin Boat Reserve	10pm to 7am daylight saving and 7pm to 7am outside	31 October 2015



Oneroa Town Centre

Waiheke Local Board
Hours of Operation: 24 hours, 7 days a week





0 4 8 12 m

Scale @ A4 = 1:480

Date Printed: 16/10/2015



Miami Avenue Carpark

Waiheke Local Board

Hours of Operation: 24 hours, 7 days a week





0 2.5 5 7.5 m

Scale @ A4 = 1:310

Date Printed: 16/10/2015

Locality Guide



131-133 Ocean View Road Oneroa

Waiheke Local Board

Hours of Operation: 10pm to 7am during daylight saving and 7pm to 7am outside daylight saving



Auckland Council

Te Kaunihera o Tāmaki Makaurau



0 6 12 18 m

Scale @ A4 = 1:700

Date Printed: 16/10/2015



Anzac Reserve - Waiheke Island

Waiheke Local Board

Hours of Operation: 10pm to 7am during daylight saving and 7pm to 7am outside daylight saving

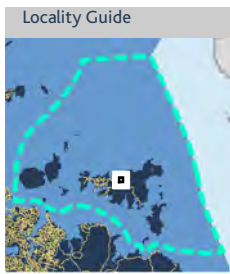




0 40 80 120 m

Scale @ A4 = 1:4,660

Date Printed: 16/10/2015



Belle Terrace Foreshore Reserve

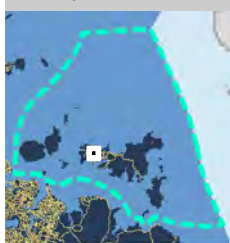
Waiheke Local Board

Hours of Operation: 10pm to 7am during daylight saving and 7pm to 7am outside daylight saving





Locality Guide



Burrell Ocean View Walkway

Waiheke Local Board

Hours of Operation: 10pm to 7am during daylight saving and 7pm to 7am outside daylight saving

0 7 14 21 m

Scale @ A4 = 1:850

Date Printed: 16/10/2015



Auckland Council

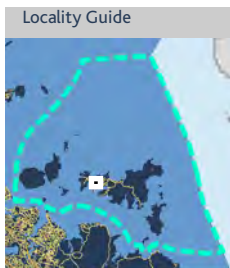
Te Kaunihera o Tāmaki Makaurau



0 2 4 6 m

Scale @ A4 = 1:270

Date Printed: 16/10/2015



Citrus Corner

Waiheke Local Board

Hours of Operation: 10pm to 7am during daylight saving and 7pm to 7am outside daylight saving

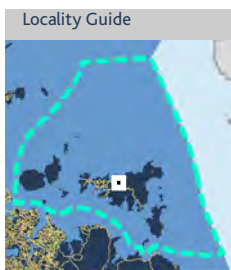




0 6 12 18 m

Scale @ A4 = 1:720

Date Printed: 16/10/2015



Garratt Road Access way

Waiheke Local Board

Hours of Operation: 10pm to 7am during daylight saving and 7pm to 7am outside daylight saving

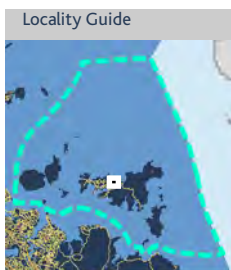




0 2 4 6 m

Scale @ A4 = 1:230

Date Printed: 16/10/2015



Homersham Reserve

Waiheke Local Board

Hours of Operation: 10pm to 7am during daylight saving and 7pm to 7am outside daylight saving





0 10 20 30 m

Scale @ A4 = 1:1,380

Date Printed: 16/10/2015



Matapana Reserve

Waiheke Local Board

Hours of Operation: 10pm to 7am during daylight saving and 7pm to 7am outside daylight saving





0 30 60 90 m

Scale @ A4 = 1:3,940

Date Printed: 16/10/2015

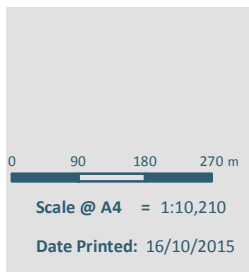
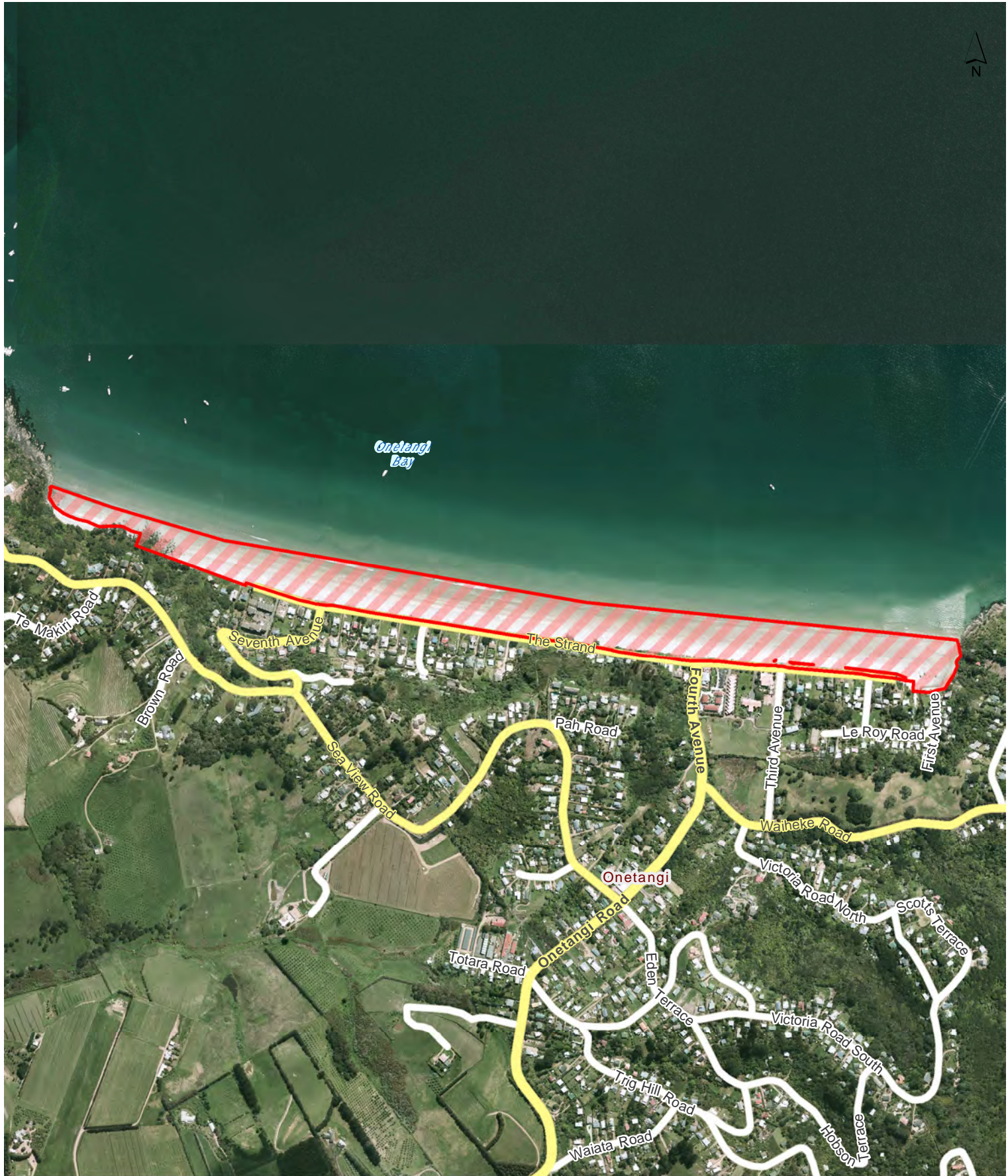


Oneroa Beach

Waiheke Local Board

Hours of Operation: 10pm to 7am during daylight saving and 7pm to 7am outside daylight saving



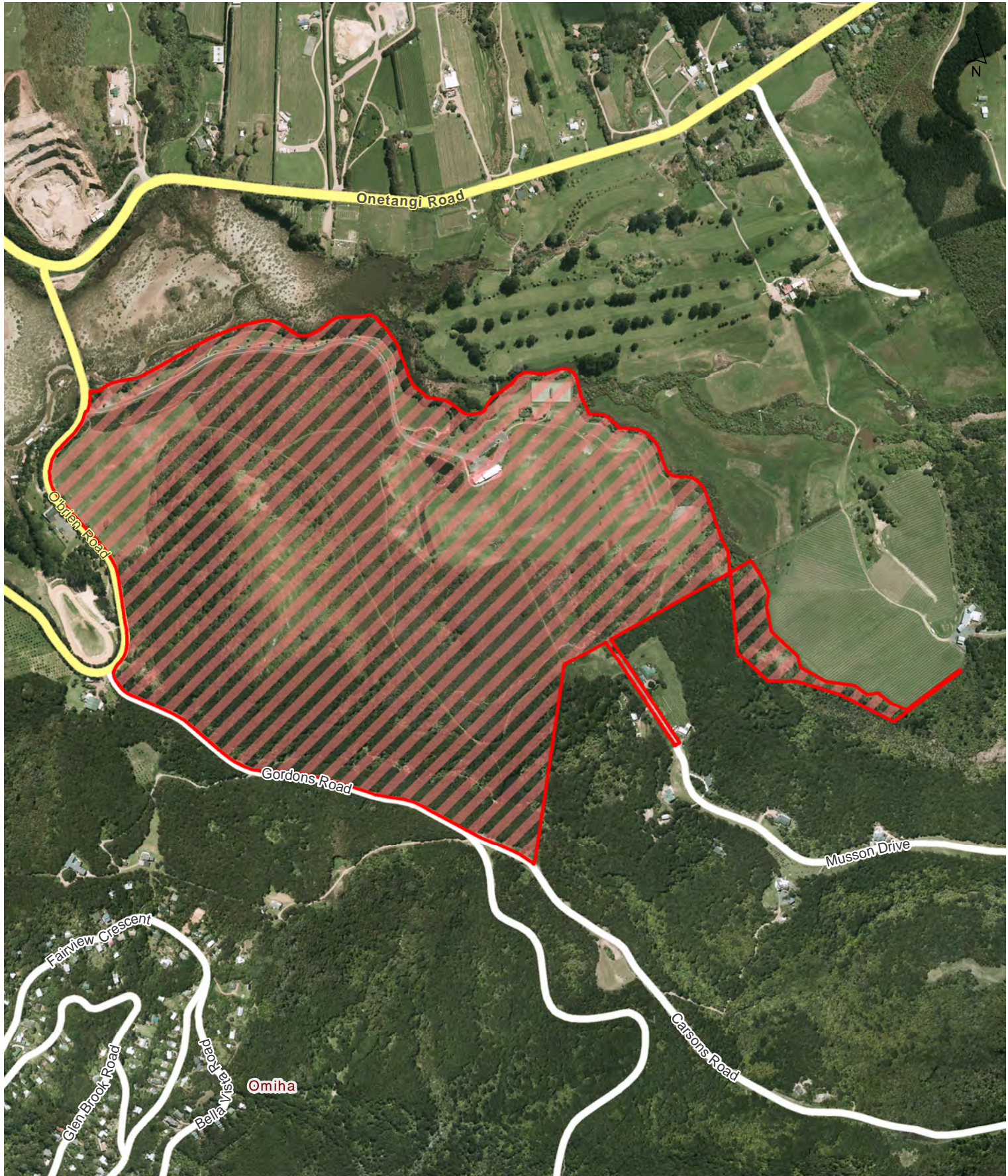


Onetangi Beach Strand

Waiheke Local Board

Hours of Operation: 10pm to 7am during daylight saving and 7pm to 7am outside daylight saving





Locality Guide



Onetangi Sports Park

Waiheke Local Board

Hours of Operation: 10pm to 7am during daylight saving and 7pm to 7am outside daylight saving

0 75 150 225 m

Scale @ A4 = 1:8,820

Date Printed: 16/10/2015



Auckland Council

Te Kaunihera o Tāmaki Makaurau



0 10 20 30 m

Scale @ A4 = 1:2,020

Date Printed: 16/10/2015



Palm Beach Reserve

Waiheke Local Board

Hours of Operation: 10pm to 7am during daylight saving and 7pm to 7am outside daylight saving

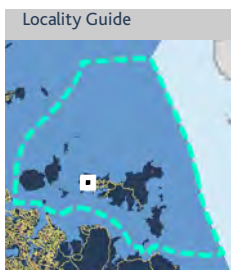




0 20 40 60 m

Scale @ A4 = 1:2,360

Date Printed: 16/10/2015



Te Huruhi Bay Reserve

Waiheke Local Board

Hours of Operation: 10pm to 7am during daylight saving
and 7pm to 7am outside daylight saving





0 7.5 15 22.5 m

Scale @ A4 = 1:880

Date Printed: 16/10/2015



Third Reserve

Waiheke Local Board

Hours of Operation: 10pm to 7am during daylight saving and 7pm to 7am outside daylight saving





0 9 18 27 m

Scale @ A4 = 1:1,050

Date Printed: 16/10/2015



Tin Boat Reserve

Waiheke Local Board

Hours of Operation: 10pm to 7am during daylight saving and 7pm to 7am outside daylight saving

