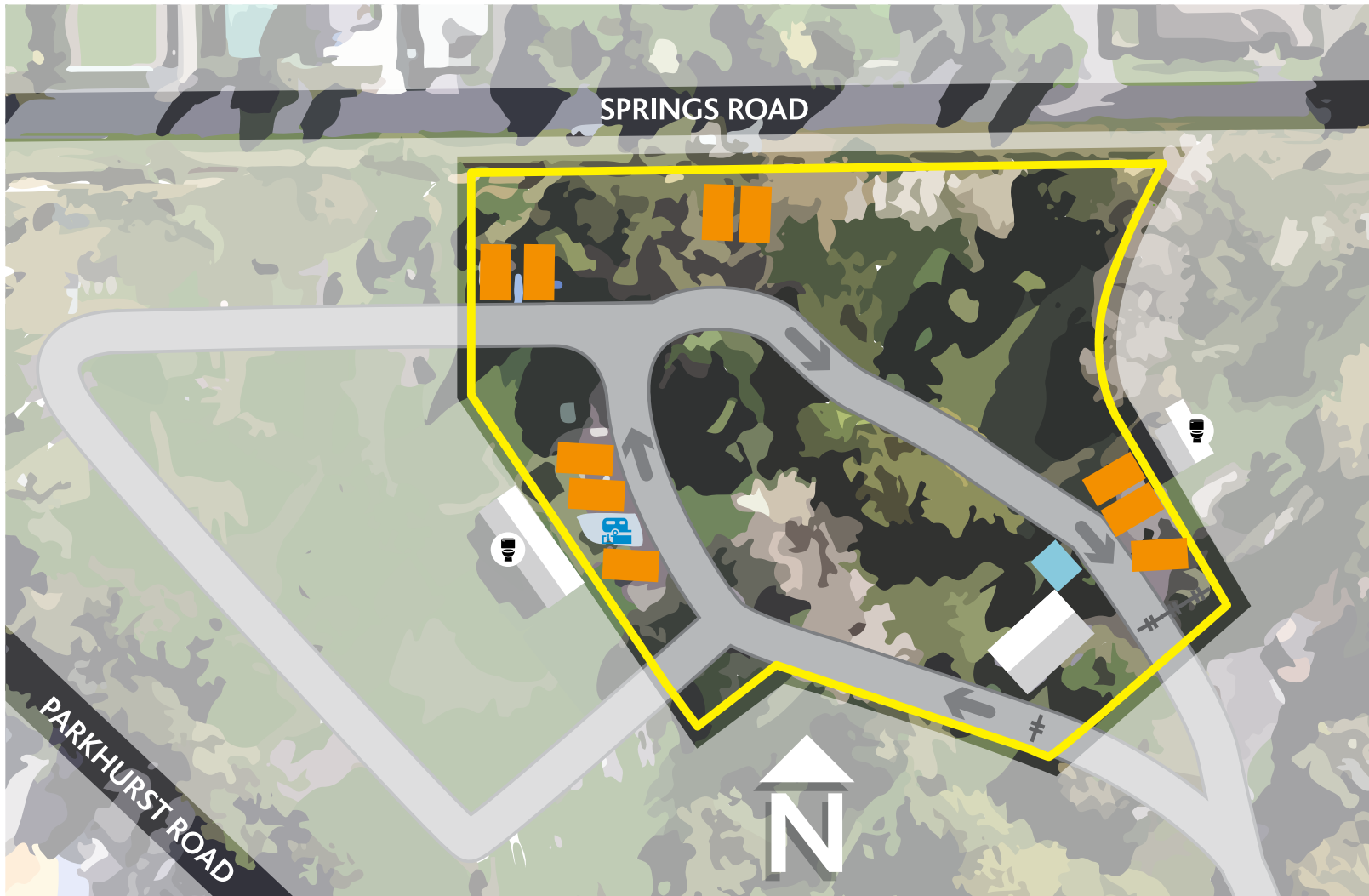








Kaipātiki Campground

Formerly Parakai Springs Campground



Bookings
from
February
2019

-  Non-powered site for self-contained vehicle
-  Dump station, water supply
No parking
-  Access gate
-  Boundary
-  Rubbish removal area
-  Toilets

Kaipātiki Campground

Situated within the Kaipātiki Reserve, the Kaipātiki Campground (formerly Parakai Springs Campground) offers a relaxing short-stay for visitors in self-contained vehicles.

This campground does not offer tent sites.

Enjoy the Parakai Springs geothermal pool complex right on your doorstep and explore the stunning natural environment and recreation opportunities of the Kaipara region within driving distance from the campground.

Address and Access

- Kaipātiki Campground, Kaipātiki Reserve, 150 Parkhurst Road, Parakai, Auckland
- Turn into the main entrance to the reserve off Parkhurst Road. Follow the driveway past the Parakai Springs pool complex carpark and entrance
- On the keypad attached to the campground gate, enter the access code provided with your booking confirmation

Bookings

- No bookings can be taken prior to February 2019
- From February 2019 all bookings must be made and paid for online at the Auckland Council website www.aucklandcouncil.govt.nz. Search 'ACCOMMODATION' and follow the steps to find Kaipātiki Campground.
- For booking assistance call 09 301 0101
- Cost is \$20 incl. GST per site
- Maximum stay is 7 consecutive nights
- Check-in is from 11am
- Check-out is by 11am at the latest



Sites

- No tent sites available
- 10 hard-surface sites for vehicles available from February 2019 (increasing to 17 sites by mid-2019)
- All sites are non-powered
- All sites are 10 meters long
- One self-contained vehicle allowed per site (Caravans: both the caravan and towing vehicle must fit on the site, or the towing vehicle must be parked in the carpark outside the campground)
- Access road to sites is one-way

Vehicles

The following vehicles can stay on the hard-surface sites:

- Campervans
- Caravans with towing vehicle
- Motorhomes and small buses up to 8 meters long

Self-Containment Certificate

- All accommodation vehicles must display a valid NZS 5465:2001 Self-Containment Certificate
- If you are renting your vehicle, check with your vehicle provider if you are unsure about your vehicle's certification
- If you own your vehicle, a handy guide is available at www.nzmca.org.nz/certified-self-containment
- A Self-Containment Certificate ensures the vehicle meets the ablutionary and sanitary needs of occupants and helps protect the environment and public health from indiscriminate waste disposal

Security

- Campground gate always locked, but operational 24 hrs, 7 days per week
- Gate only accessible by campground users with an access code
- Campground visitors are responsible for the security of their vehicles and personal belongings, both in the campground and in the carpark outside the campground

Reporting an issue

The Kaipātiki Campground has no on-site manager. If a campground-related issue arises, please phone 09 301 0101

Amenities

Toilets

Public toilets are available for all users of the reserve during opening hours

Dump Station

Available for campground users only, at no extra cost

Rubbish

Shared rubbish and recycling station available, at no extra cost

Water

Hose available for topping up water tanks. This water is safe for drinking.

Parking

- No parking within campground unless on a booked hard-surface site
- Additional vehicles must park in the carpark outside the campground gate, at drivers' own risk

Not available

Power supply, showers, kitchen or laundry

Rules

Please be considerate of other campground users

Alcohol

Prohibited in the campground and the reserve

Fires

Prohibited in the campground and the reserve

Emergency

In the event of a fire emergency, medical emergency, or if your personal safety is threatened, please phone 111 immediately