



# 2021 Auckland Plan Annual Scorecard

## Overview

The Auckland Plan 2050 is a 30-year spatial plan for Auckland adopted in June 2018. It provides broad direction to guide Auckland's growth and development while delivering on the six outcomes and the Development Strategy contained within the plan.

Effective monitoring is fundamental to the successful implementation of the Auckland Plan 2050. It enables us to track progress and provides an ongoing evidence base to align our implementation and regulatory plans and funding programmes.

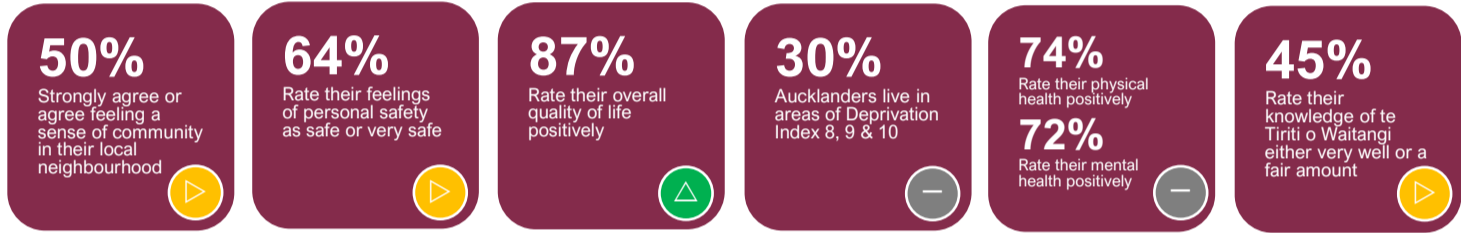
The Auckland Plan Annual Monitoring Report uses 33 measures for tracking progress against the outcomes in the Auckland Plan 2050. This is a high-level analysis of the trends. More detailed analysis is carried out as part of the Three Yearly Progress Report. The first of these reports was reported to the Planning Committee in March 2020 (and is available on the Auckland Plan website [www.aucklandplan.govt.nz](http://www.aucklandplan.govt.nz) in the measuring progress section).

This Annual Monitoring Report mostly uses data from 2020 or before (the latest data available as of June 2021). The breadth of the Auckland Plan 2050 outcomes requires the annual monitoring report to use metrics and data sources which vary in terms of their availability and frequency. This means that there will not be updates for all measures.

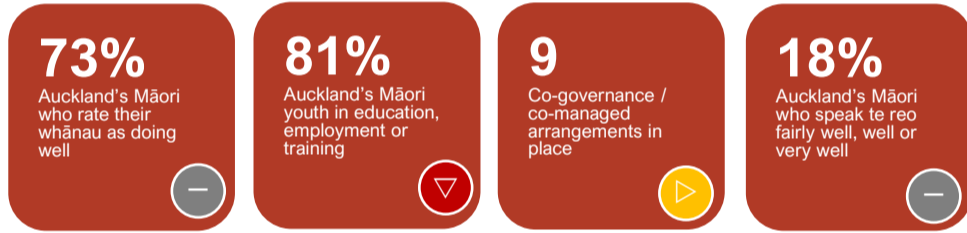
The impacts of COVID-19 are captured in some instances. For the most recent data available for Auckland (for example on the economic impacts of COVID-19), go to Auckland Council's Research and Evaluation Unit website at: <https://knowledgeauckland.org.nz>.

### Auckland Plan Outcomes

**Belonging and Participation**



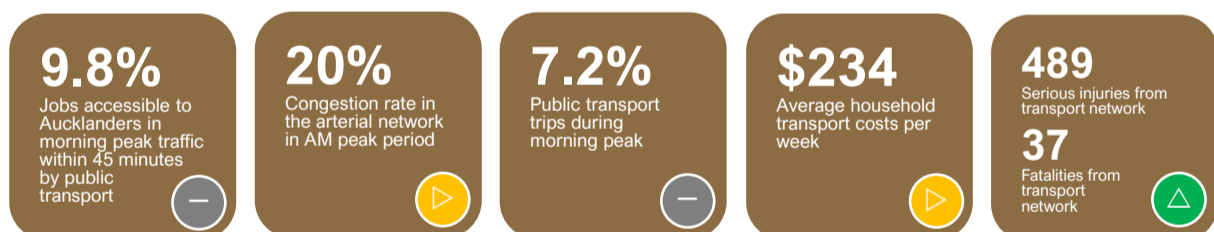
**Māori Identity and Wellbeing**



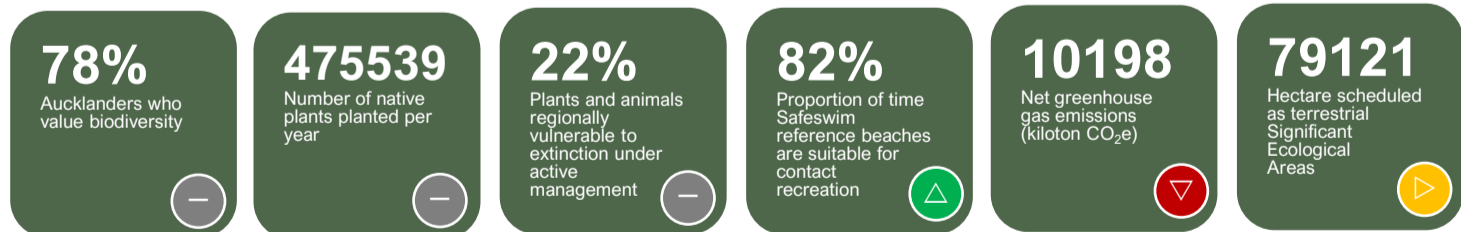
**Homes and Places**



**Transport and Access**



**Environment and Cultural Heritage**



See note below

**Opportunity and Prosperity**



A sample of sub-measures are shown here that made up the six Environment and Cultural Heritage measures:

- People's treasuring and stewardship of the natural environment and cultural heritage
- Active management of priority native habitats
- Active management of threatened native plants and animals
- Marine and freshwater quality
- Air quality and greenhouse gas emissions
- Statutory protection of environment and cultural heritage

Please refer to the full report for further information.

Positive trend  
 No significant change  
 Negative trend  
 No trend yet