

30 September 2016

To: Auckland Council
Attn: Stephen Town, Chief Executive
stephen.town@aucklandcouncil.govt.nz

Cc: Legal Department
c/- Mike Wakefield
mike.wakefield@aucklandcouncil.govt.nz

The Unitary Plan Team
unitaryplan@aucklandcouncil.govt.nz

Decision of the Requiring Authority on Designations 3300, 3301, 3302, 3303 and 3304 to the Proposed Auckland Unitary Plan.

Pursuant to Section 151 of the Local Government (Auckland Transitional Provisions) Act 2010, Kordia Limited, being a requiring authority under the Resource Management Act 1991, makes the following decisions on its designations in the Proposed Auckland Unitary Plan.

Designation 3300 - Microwave Transmission Corridor

Pursuant to Section 151(2) the Requiring Authority **accepts the recommendations** of the Auckland Council to amend the maps to extend designation 3300 over designation 8301 (TVNZ microwave corridor) as they are joint designations.

Pursuant to Section 151(3) the Requiring Authority makes the following modifications to this designation for the purpose of correcting errors and providing greater clarification of the requirements of the designation.

Cross referencing of address and designation number:

The description of the designation is modified to read:

'Joint Kordia Ltd and Television New Zealand Ltd (Designation ~~300~~**8301**) designation from 100 Victoria Street West, Auckland Central to Ponsonby Road, Ponsonby. Kordia Ltd only designation from Ponsonby Road to ~~501~~ **539** Scenic Drive, Waiatarua.'

Reason: This modification serves only to correct typographical errors in the PAUP, with the physical location of the facility remaining unchanged. Therefore, no environmental effects arise from the correction of this location reference.

New Zealand Standard in Condition 1:

Kordia Limited

Level 3 | 162 Victoria Street West | Auckland 1010
PO Box 2495 | Auckland 1140 | New Zealand
T. +64 9 551 7000 | www.kordia.co.nz



Condition 1 is modified to read:

*All masts, antennas, aerials and other facilities must comply with New Zealand Standard ~~NZS6609:1990~~ **NZS2772.1:1999** or any amendments where the public has access.*

Reason: The standard stated in this condition is outdated and modification of the referenced standard is necessitated to reflect the current New Zealand Standard with which telecommunication facilities are required to comply.

Co-ordinates of Start and End point or Corridor and Setting of Datum Level:

The table in the designation shows, at specific points along the path of the corridor, the width of the corridor and the base height of the corridor. Intermediate widths and heights shall be determined by extending straight lines between adjacent points. The Requiring Authority modify this table to include the following start and end reference points that correlate with the maps and also provide the datum on which the heights in the table are to be measured from. The designation is to be modified by the addition of the following.

'The 19.3km corridor runs between 100 Victoria Street West, Central Auckland, being 803494.03mN, 399729.84mE, RL=30.645M and 539 Scenic Drive, Waiaturua, being 794818.46mN, 382527.82mE. (Points A and E respectively in the 'Key specific points' annotation following the table)

Levels provided are in terms of Auckland Vertical Datum (MSL) 1946; Origin SM 6181 SO 53103C. Coordinates are in terms of Geodetic datum Mount Eden Circuit'

Reason: To clarify the start and end points of the corridor and provide an explanation as to the basis for determining relative height level along the corridor. This modification does not alter the requirements of the current condition as notified but serves only to clarify how the conditions (Table) is to be applied.

Cross-section Diagram and Technical Paper on Corridor Dimension and Radio Frequency Emissions:

The Requiring Authority has removed the Cross-sections of the Land Contour Path and the Technical Paper on Corridor Dimension and Radio Frequency Emissions from the Designation.

Reason: The cross-section is illegible and irrelevant to the actual determination of height at any given point along the corridor with the table sufficient to indicate height restrictions to any persons applying the designation heights to their property and the 'Technical Paper on Corridor Dimension and Radio Frequency Emissions' is a technical paper that serves as background information only with no direct requirements in it for either the requiring authority or the owners of properties over which the corridor passes. Further, the reproduction of the table forming part of the designation in this technical paper contains a typographical error that may lead to confusion as to which table is correct.



Designation 3301 - Waiaturua Broadcasting and Telecommunications Facility

Pursuant to Section 151(2) the Requiring Authority **accepts the recommendations** of the Auckland Council to amend conditions 2 and 3 of this designation.

Pursuant to Section 151(3) the Requiring Authority makes the following modifications to this designation for the purpose of providing greater clarification of the requirements of the designation.

Condition 2 – Measurement Point of reference:

Condition 2 is modified to read:

'An Outline Plan is not required for the addition and replacement of antennas on the existing tower provided the antenna including the mount, the shroud, and ancillary equipment shall fit within the dimensions of a square shape in plan view that, when measured from the centre of the tower **base**, does not increase the effective visual width of the tower by more than 50% (see attached Diagram 1).'

Diagram 1 – Depiction of Antenna Size Condition and Potential Effect has also been modified to reflect this change in the condition.

Reason: To avoid confusion, the measurement from the centre of the tower is to be taken at the base of the tower as shown on the attached sketch

Condition 3 – Size of Antenna

Condition 3b is modified to read:

b. No antenna affixed to a building measures greater than 1.2m² ~~in dimension~~.

Reason: Clarification to remove ambiguity. The dimension is to be read as an area as this is a true representation of the size of the antenna.

Condition 4 – Other Structures

Condition 4 is modified to read:

4. No new structures greater than 2m in height shall be erected on the site without submission of an Outline Plan of works pursuant to section 176A of the Resource Management Act 1991 other than the antennas or supporting infrastructure as set out in conditions 2 and 3 above or as provided for by any other national standards.

Reason: Presently this condition requires that any new structure not encompassed by Conditions 2 and 3 of the designation be the subject of an outline plan of works under Section 176A of the RMA. With the enactment of the National Environment Standards for Telecommunication facilities (NES) far more structures are able to be established as a permitted activity. To retain the current wording of Condition



4 may result in outline plans of work being required for structures that may otherwise be permitted activities or of inconsequential stature.

Designation 3302 - Kaipara Hills Broadcasting and Telecommunications Facility

Pursuant to Section 151(2) the Requiring Authority **accepts the recommendations** of the Auckland Council to 'roll over' this designation.

Pursuant to Section 151(3) the Requiring Authority makes the following modifications to this designation for the purpose of providing greater clarification of the requirements of the designation.

Modification of Condition 3

Condition 3 shall be modified to read:

*'No new structures **greater than 2m in height** shall be erected on the site without the submission of an Outline Plan pursuant to section 176A of the Resource Management Act other than those provided for in Condition 2 above, **or those permitted under other nationally controlling standards** or structures on the site, or any other temporary structures erected for the purposes of allowing maintenance or repair of existing structures (providing that such temporary structures will be removed once any such maintenance or repair has ceased).'*

Reason: As this modification only enables structures that are of inconsequential size or are otherwise already specified or permitted; the change in wording will not give rise to a change in the scale or intensity of the installation only serving as administration guidance. Therefore, there will be no change in the visual or physical effects the installation is presently able to generate toward the surrounding environment.

Deletion of Conditions 5 – 10 and Accompanying Notes

Conditions 5 – 10 and their associated notes are deleted from this designation.

Reason: The deleted conditions controlled the works associated with and the appearance of the original facility at the time of its establishment. With the original designation having been given effect to and the existing environment having been created in accordance with original conditions, each has been satisfied and is no longer relevant to the on-going operation of the facility. As these conditions do not pertain to the on-going appearance of the site or the control of new structures on it, these conditions do not have any role in mitigating or avoiding any likely future environmental effect the on-going operation of the site may generate.



Designation 3303 - Pine Hill Broadcasting and Telecommunications Facility

Pursuant to Section 151(2) the Requiring Authority **accepts the recommendations** of the Auckland Council to 'roll over' this designation.

Pursuant to Section 151(3) the Requiring Authority makes the following modifications to this designation for the purpose of providing greater clarification of the requirements of the designation.

Purpose

The 'Purpose' of the designation shall read:

*Broadcasting and telecommunications facility the continued operation of the existing broadcasting and telecommunications facility including a **guyed** monopole mast of 27.5m height, a transmission building with ancillary and associated works and activities.*

Reason: The modification is undertaken to better reflect the character of the monopole mast on this site.

Modifications of Conditions

Condition 1:

Requirements b and c are deleted from Condition 1 as follows:

1. *The following equipment shall be permitted to be attached to or erected on the existing mast, on a permanent basis without the provision of any outline plan of works pursuant to section 176A of the Resource Management Act 1991:*
 - a. *Broadcasting, telecommunication and radio communication antennas including, dish, whip, grid, yagi, dipoles and panels or similar ancillary equipment, but no single antenna dish or panel shall have a solid frontal surface area of greater than 0.6m² or dimension greater than 1.2m in length or 0.6m in width;*
 - b. ~~*Any dish shaped antenna greater than 0.3m in diameter must be attached to the mast at an elevation no greater than 18m;*~~
 - c. ~~*Up to two dish shaped antennas of 1.2m in diameter at a max height above ground of 14m; and*~~
 - d. *No part of an antenna may project a horizontal distance greater than 1.4m from the face of the mast measured radially on an axis from the centre of the mast to the furthestmost edge of the antenna.*

Reason: Conditions 1b and 1c are incongruous with Condition 1a. Condition 1b prevents the installation of antennas permitted by 1a and Condition 1a appears to prevent the installation of antennas permitted under Condition 1d. This situation is confusing to the administration of the designation.



Condition 2:

Condition 2 shall read:

2. Antennas **defined in Condition 1** may only be mounted on the Mast and or the telecommunications building. No antennas or additional masts may be mounted elsewhere on the site or the access to the site from Browns Bay Road **without the provision of an outline plan of works.**

Reason: The modification of this condition serves only to cross-reference the forms of antenna that may be mounted on the mast to that listed in Condition 1 and clarify that where works exceed the thresholds of Condition 1 or represent another structure or arrangement of antenna an outline plan of works will be required to enable the review of the works and the effects it may generate.

Condition 3:

Condition 3 has been modified to read:

*'No new structures **greater than 2m in height** shall be erected on the site without the submission of an Outline Plan pursuant to section 176A of the Resource Management Act other than those provided for in Condition 1 above, **those permitted by National Environmental Standards** or structures on the site, or any other temporary structures erected for the purposes of allowing maintenance or repair of existing structures (providing that such temporary structures will be removed once any such maintenance or repair has ceased).'*

Reason: This modification only enables structures that are of inconsequential size, noting that this site is a rear site, or are otherwise already specified or permitted; the change in wording will not give rise to a change in the scale or intensity of the installation only serving as administration guidance.

Condition 8:

To ensure that the latest standards for radio frequencies are maintained and there is consistency between the provisions of the telecommunication designations Condition 8 has been modified to read:

~~8. Radio frequency radiation emissions shall comply with Resource Management (National Environmental Standards for Telecommunication Facilities) Regulations 2008 — Clause 4 Telecommunication facilities generating radiofrequency fields.~~

8. The Broadcasting and telecommunications facility shall be operated so that it satisfies the requirements of NZS2772.1:1999 in respect of all areas to which the public may have access.

Reason: The updating of the condition ensures that compliance with the latest New Zealand standards are maintained to avoid any adverse effect on the public with no effect on the environment itself arising from the updating of the standards in this condition.

Condition 9:



Modification is required to Condition 9 to reflect the change in the governance of Auckland and provide for a change in the legacy planning documents to ensure the on-going relevance of this condition. Accordingly Condition 9 shall read:

9. The noise levels generated by the activity must at all times comply with ~~section 10.5 of the Auckland Council District Plan (North Shore Section) 2002~~ **the permitted noise standards of the Auckland Unitary Plan.**

Reason: As the facility is still required to meet the permitted activity noise standards of the current Plan at any given time, the modification does not result in any greater adverse noise effects on the aural character of an area or the amenity of any person than deemed acceptable by in any given environment.

Condition 10.

Condition 10 pertaining to the Requiring Authorities' financial responsibility is deleted.

~~10. Kordia shall retain financial responsibility for all equipment and telecommunications activities from the site either through commercial agreement with clients or ownership of equipment.~~

Reason: The matter of financial responsibility need not be a condition in the designation as the purpose of the designation is to enable works with some degree of certainty for the Requiring Authority with the Council having been satisfied that the likely future effects of giving effect to the designation will be appropriately managed and this condition has relevance to mitigating such effects.

Deletion of Advice Note 2:

The requiring authority has deleted Advice Note 2, which read:

~~2. Prior to undertaking any works on site the applicant/requiring authority must first obtain written consent from Water Care Services Limited who are responsible for the underlying designation with 'prior status' (Designation 102) in accordance with Section 176 of the Resource Management Act 1991.~~

Reason: The requiring authority is aware of its obligations to consult with the Water Care Services Limited prior to undertaking any works. This situation is covered by a separate agreement between the requiring authorities and need not form part of the designation terms.

Designation 3304 - Hunua Broadcasting and Telecommunications Facility

Pursuant to Section 151(2) the Requiring Authority **accepts the recommendations** of the Auckland Council to enable the height of the tower to be increased from 20m to 28m with the amend conditions for this designation.



Pursuant to Section 151(3) the Requiring Authority makes the following modifications to this designation for the purpose of providing greater clarification of the requirements of the designation.

Condition 2 – Measurement point of reference

Condition 2 is modified to read:

'An Outline Plan is not required for the addition and replacement of antennas on the existing tower provided the antenna including the mount, the shroud, and ancillary equipment shall fit within the dimensions of a square shape in plan view that, when measured from the centre of the tower **base**, does not increase the effective visual width of the tower by more than 50% (see attached Diagram 1).'

Diagram 1 – Depiction of Antenna Size Condition and Potential Effect has also been modified to reflect this change in the condition.

Reason: To avoid confusion, the measurement from the centre of the tower is to be taken at the base of the tower as shown on the attached sketch

Modifications of Condition 3

Condition 3 has been modified to read:

3. No new structures greater than 2m in height shall be erected on the site without submission of an Outline Plan of works pursuant to section 176A of the Resource Management Act 1991 other than the antennas or supporting infrastructure as set out in conditions 2 and 3 above or as provided for as a permitted activity in any other national standards.

Reason: As this modification only enables structures that are otherwise already specified or permitted; the change in wording will not give rise to a change in the scale or intensity of the installation only serving as administration guidance

Pip Carroll
Contracts and Property
Kordia Limited.

Date: 30/9/16



Pip Carroll



3300 Microwave Transmission Corridor

Designation Number	3300
Requiring Authority	Kordia Ltd
Location	100 Victoria Street West, Auckland Central to 539 Scenic Drive, Waitaturua
Roll Over Designation	Yes
Legacy Reference	Designation 301, Auckland Council District Plan (Central Area Section) 2005; Designation B0802, Auckland Council District Plan (Isthmus Section) 1999; and Designation K2, Auckland Council District Plan (Waitakere Section) 2003
Lapse Date	Given effect to (i.e. no lapse date)

*Joint Kordia Ltd and Television New Zealand Ltd (Designation 8301) designation from 100 Victoria Street West, Auckland Central to Ponsonby Road, Ponsonby. Kordia Ltd only designation from Ponsonby Road to 539 Scenic Drive, Waitaturua.

Purpose

Microwave transmission corridor – a protection corridor of specified height (elevation above sea level) and width through which no building, structure or tree can pass to ensure continuity of a microwave linking / transmission path from the Television New Zealand Studios at 100 Victoria Street West, Central Auckland to the Waitaturua transmission tower at 539 Scenic Drive, Waitaturua.

Conditions

1. All masts, antennas, aerials and other facilities must comply with New Zealand Standard NZS6609: 1990 or any amendments, at all times.

The following table shows, at specific points along the path of the corridor, the width of the corridor and the base height of the corridor. Intermediate widths and heights shall be determined by extending straight lines between adjacent points.

The 19.3km corridor runs between 100 Victoria Street West, Central Auckland, being 803494.03mN, 399729.84mE and 539 Scenic Drive, Waitaturua, being 794818.46mN, 382527.82mE. (Points A and E respectively in the 'Key specific points' annotation following the table)

Levels provided are in terms of Auckland Vertical Datum (MSL) 1946; Origin SM 6181 SO 53103C RL=30.645. Coordinates are in terms of Geodetic datum Mount Eden Circuit.

Path Length (KM)	Corridor Width (m)	Maximum Obstruction Height above Mean Sea Level (m)
0.000 (a)	6.8	62.6
0.025	6.8	63.0
0.050	6.8	63.4
0.075	6.8	63.8

Path Length (KM)	Corridor Width (m)	Maximum Obstruction Height above Mean Sea Level (m)
0.100	6.8	64.2
0.125	6.8	64.6
0.150	6.8	65.0
0.175	6.8	65.4
0.200	6.8	65.8
0.225	6.8	66.2
0.250	6.8	66.6
0.275	6.8	67.0
0.300	6.8	67.3
0.325	6.8	67.7
0.350	6.8	68.1
0.375	6.8	68.5
0.400	6.8	68.9
0.425	6.8	69.3
0.450	6.8	69.7
0.475	6.8	70.1
0.500	6.8	70.5
0.525	6.8	70.9
0.550	6.8	71.3
0.575	6.8	71.7
0.600	6.8	72.1
0.625	6.8	72.5
0.650	6.8	72.9
0.675	6.8	73.3
0.700	6.8	73.7
0.725	6.8	74.1
0.750	6.8	74.5
0.775	6.8	74.9
0.800	6.8	75.3
0.825	6.8	75.7
0.850	6.8	76.1
0.875	6.8	76.5
0.900	6.9	76.8
0.925	7.0	77.2

Path Length (KM)	Corridor Width (m)	Maximum Obstruction Height above Mean Sea Level (m)
0.950	7.1	77.6
0.975	7.2	77.9
1.000	7.3	78.3
1.10	7.6	79.7
1.20	7.9	81.1
1.30	8.2	82.6
1.40	8.5	84.1
1.50 (b)	8.8	85.5
1.60	9.1	87.0
1.70	9.3	88.5
1.80	9.6	90.0
1.90	9.8	91.5
2.00	10.0	93.0
2.10 (c)	10.2	94.5
2.20	10.4	96.1
2.30	10.6	97.6
2.40	10.8	99.1
2.50	11.0	100.7
2.60	11.2	102.2
2.70	11.4	103.8
2.80	11.6	105.3
2.90	11.7	106.9
3.00	11.9	108.4
3.10	12.1	110.0
3.20	12.2	111.6
3.30	12.4	113.2
3.40	12.5	114.7
3.50 (d)	12.7	116.3
3.60	12.8	117.9
3.70	12.9	119.5
3.80	13.1	121.1
3.90	13.2	122.7
4.00	13.3	124.3
4.5	13.9	132.4

Path Length (KM)	Corridor Width (m)	Maximum Obstruction Height above Mean Sea Level (m)
5.0	14.4	140.6
5.5	14.8	148.8
6.0	15.2	157.2
6.5	15.5	165.6
7.0	15.8	174.2
7.5	16.0	182.8
8.0	16.2	191.4
8.5	16.3	200.2
9.0	16.4	209.0
9.5	16.4	218.0
10.0	16.4	227.0
10.5	16.4	236.0
11.0	16.3	245.2
11.5	16.1	254.4
12.0	15.9	263.7
12.5	15.7	273.1
13.0	15.4	282.6
13.5	15.1	292.1
14.0	14.7	301.8
14.5	14.2	311.5
15.0	13.7	321.3
15.5	13.1	331.2
16.0	12.4	341.2
16.5	11.6	351.4
17.0	10.6	361.6
17.5	9.6	372.0
18.0	8.2	382.5
18.5	6.8	393.2
19.0	6.8	403.2
19.1	6.8	405.2
19.2	6.8	407.2
19.3 (e)	6.8	409.2

Key specific points:
a. Network Centre;

- b. Ponsonby Road;
- c. Corner of Richmond Road and Chamberlain Street;
- d. Corner of Old Mill Road and West View Road; and
- e. Waiaitua.

2. Any significant increase in radio frequency energy levels from this source shall comply with the Auckland City Consolidated Bylaw 1991 and any statutory regulation controlling radio frequency exposure levels.

Attachments

None.

3301 Waatarua Broadcasting and Telecommunications Facility

Designation Number	3301
Requiring Authority	Kordia Ltd
Location	539 Scenic Drive, Waiaurua
Roll Over Designation	Yes
Legacy Reference	Designation K1, Auckland Council District Plan (Waitakere Section) 2003
Lapse Date	Given effect to (i.e. no lapse date)

Purpose

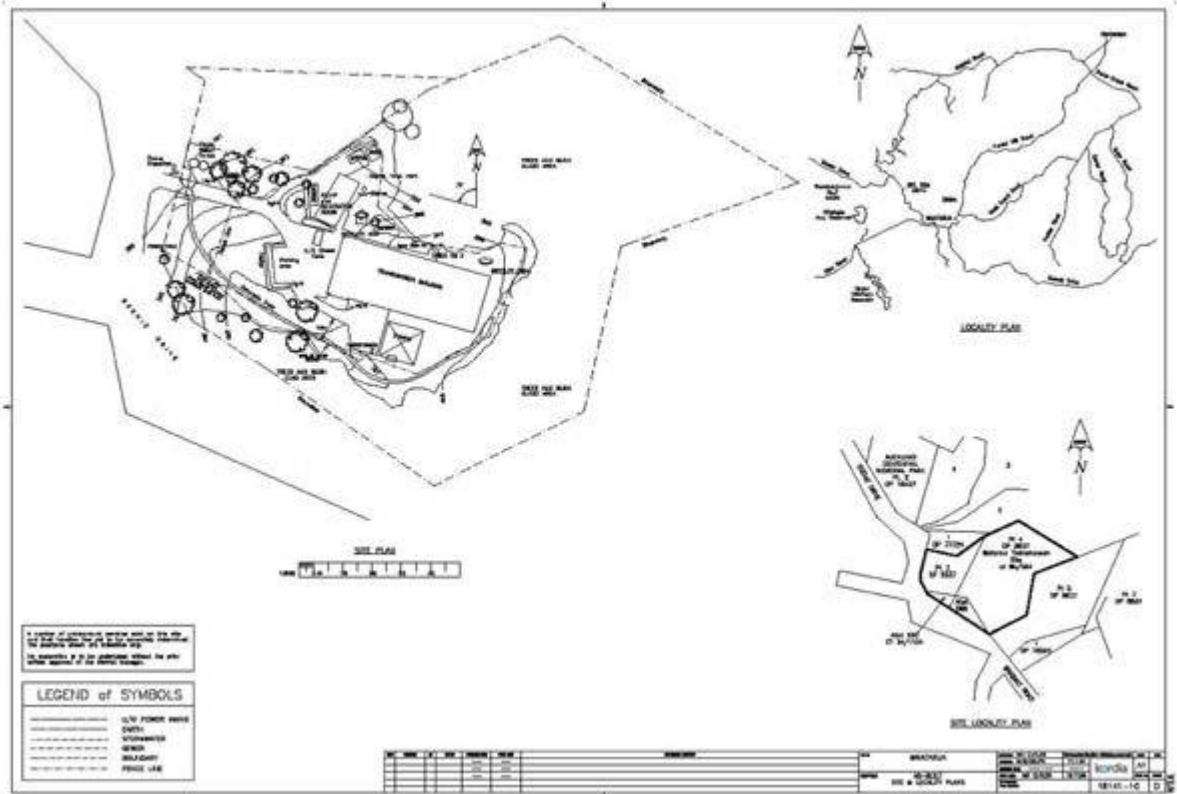
Broadcasting and telecommunications facility the continued operation of the existing broadcasting and telecommunications facility including two lattice towers of 121.9m and 27.5m height, a transmission building with roof top antenna mounting gantry, broadcasting and telecommunication antennas, and ancillary and associated works including power transformer, backup power generator etc.

Conditions

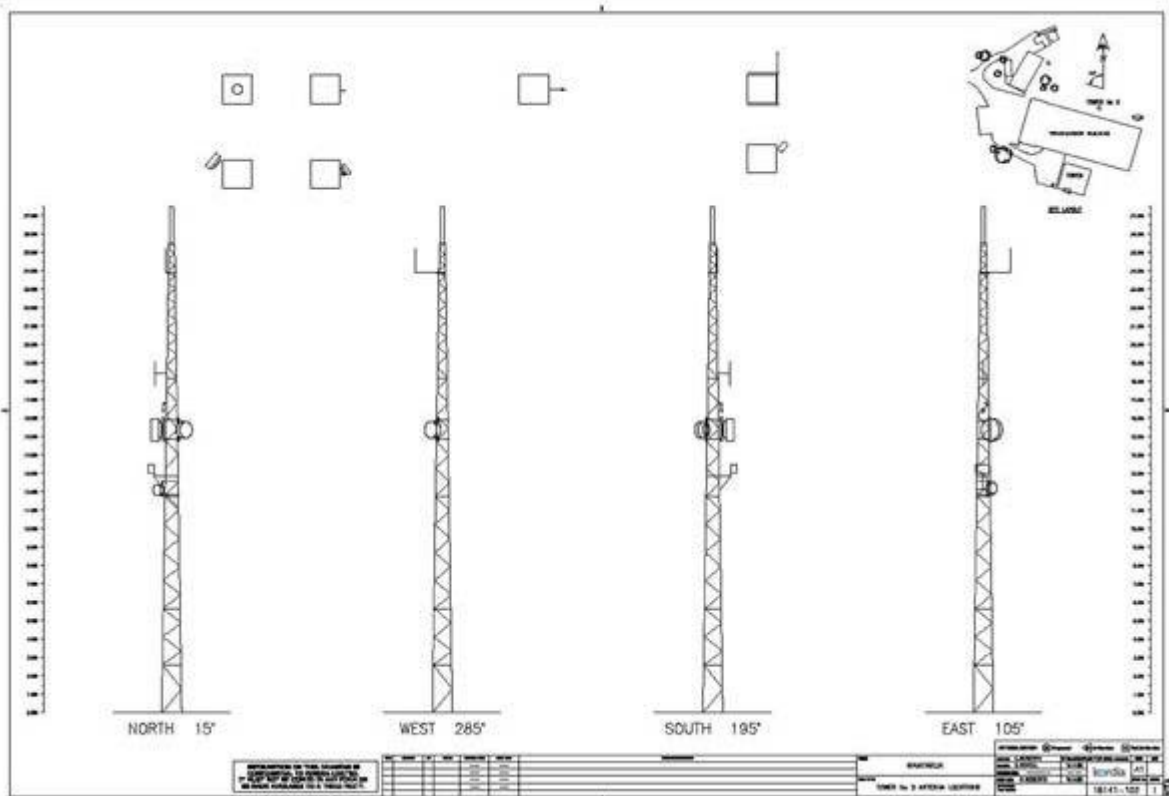
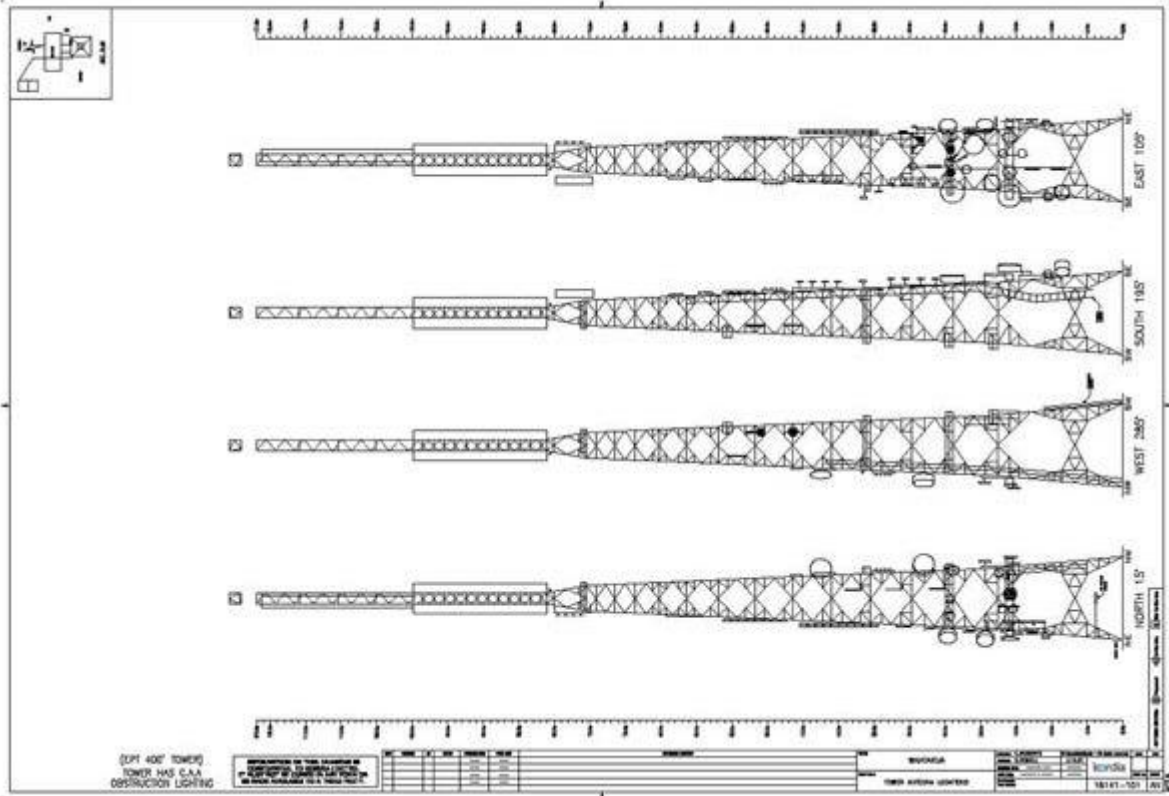
1. The Notice shall be given effect to in accordance with the requirement/application and assessment of effects on the environment prepared by Hey Consulting 2011 Limited, and Plans titled 'Waatarua Tower Layout' being drawing number 18141101, 'Waatarua Tower Locations', "Waatarua Tower No 2 Antenna Locations" 18141102, "Waatarua Building East Gantry Antenna Locations" 18141103 and "Waatarua Site Plan" being drawing Ref 18141010.
2. An Outline Plan is not required for the addition and replacement of antennas on the existing tower provided the antenna including the mount, the shroud, and ancillary equipment shall fit within the dimensions of a square shape in plan view that, when measured from the centre of the tower base, does not increase the effective visual width of the tower by more than 50% (see attached Diagram 1).
3. An Outline Plan is not required for the addition or replacement of antennas attached to or above the existing transmission building provided that:
 - a. No gantry, pipe mount or antenna extends to an elevation greater than 3m above the roof line of the building; and/or
 - b. No antenna affixed to a building measures greater than 1.2m in dimension.
4. No new structures having a height of more than 2m shall be erected on the site without submission of an Outline Plan of works pursuant to section 176A of the Resource Management Act 1991 other than the antennas or supporting infrastructure as set out in conditions 2 and 3 above or as provided for by any other national standards.
5. Structures which are either intended to replace existing structures or any temporary structures erected for the purposes of allowing maintenance or repair of existing structures are permitted provided that any temporary or replaced structures are removed once any such replacement, maintenance or repair has been completed.
6. Only two telecommunications tower shall be on the site with the main tower having a maximum height of 121.9m and a secondary tower having a maximum height of 27.5m including any attachments.
7. Radio frequency radiation emissions from the site shall comply with NZS 2772.1:1999 Radio Frequency Fields (Maximum Exposure Levels 3kHz to 300GHz).

Attachments

Site and Locality Plan



Tower elevations (Main and Secondary Towers)



Building East Gantry Antenna Locations

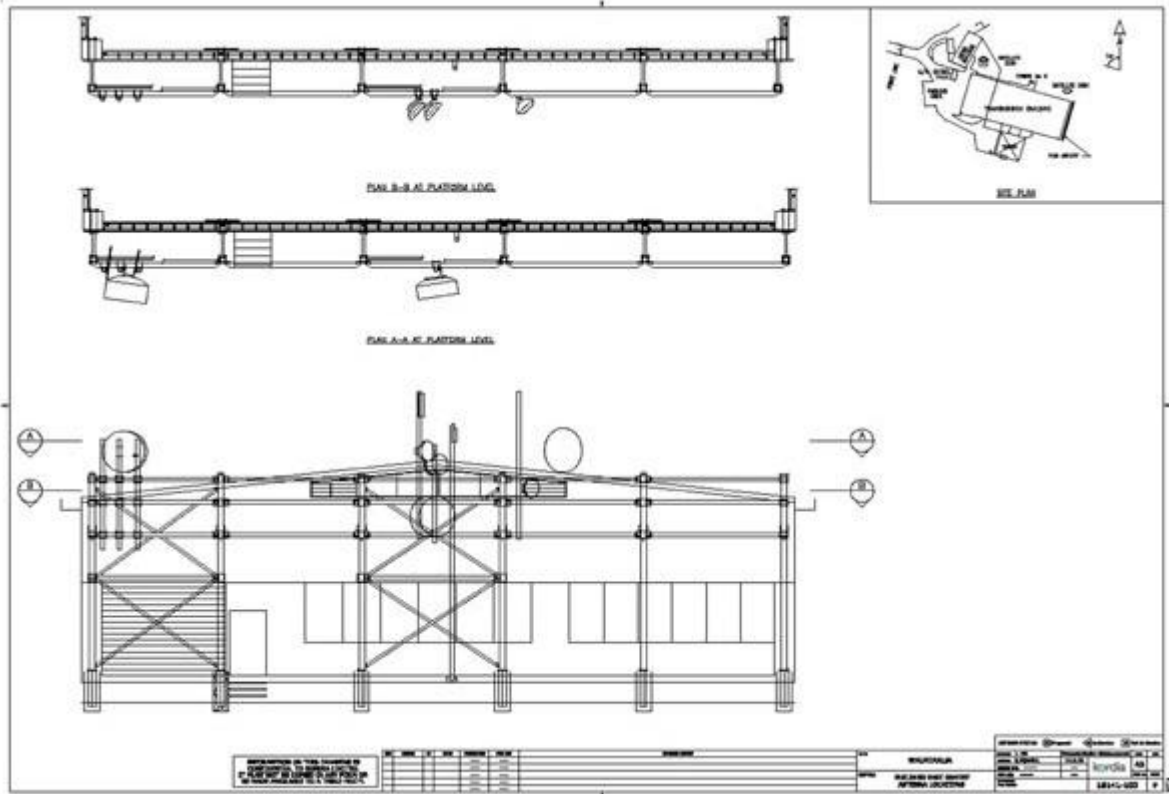
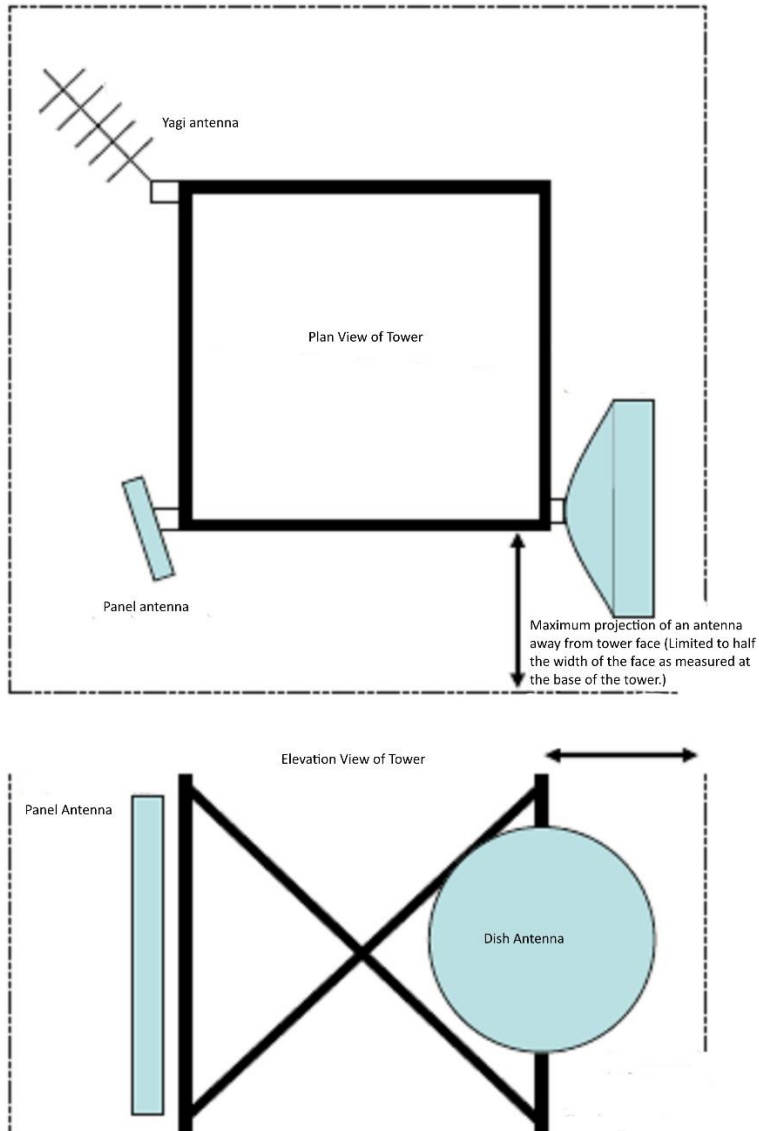


Diagram 1 - Depiction of Antenna Size Condition and Potential Effect

Depiction of Antenna Size Condition and Potential Edge Effect



3302 Kaipara Hills Broadcasting and Telecommunications Facility

Designation Number	3302
Requiring Authority	Kordia Ltd
Location	Kaipara Hills Road, (Pt allotment 201 Psh Tauhoa) Kaipara Hills
Roll Over Designation	Yes
Legacy Reference	Designation 970, Auckland Council District Plan (Rodney Section) 2011
Lapse Date	Given effect to (i.e. no lapse date)

Purpose

Broadcasting and telecommunications facility – the continued operation of the existing broadcasting and telecommunications facility including a monopole mast of 23m height, a transmission building with ancillary and associated works including power transformer, backup power generator etc.

Conditions

1. General

The activity shall proceed in general accordance with the Notice Of Requirement submitted to council, dated 31st August 2000, and attached plans drawn by Connell Wagner Ltd, Numbered 4290NT/A01, A02, C01, C02, and C03, and plans drawn by WoodwardClyde (NZ) Ltd Numbered AA28110026/01/A001 and AA28110026/01/S001 including the recessive colour scheme proposed.

2. Additional Equipment

The following equipment shall be permitted to be attached to or erected on the mast and associated structures or elsewhere on the site, on a permanent basis without the provision of an Outline Plan pursuant to section 176A of the Resource Management Act in terms of conditions 1 above:

- a. A steel unipole mast of up to 23m height with an additional 2m lightning rod located at the top of the mast;
- b. Up to six (6) dish antennas with a diameter greater than 2.5m, but less than 5.0m;
- c. Broadcasting, telecommunication and radio communication antennas including whip, grid, yagi, dipoles and panels or similar ancillary equipment, but no single antenna shall have a solid frontal surface area of greater than 5.0m² or 2.5m in diameter in the case of dish antennas unless otherwise specified in (b) above;
- d. Up to two single storey equipment shelters with a combined floor area of less than 50m²; and
- e. A vehicular access track between the level area of the proposed mast and the road adjacent together with an area for parking and turning adjacent to the main structures.

3. New Structures

'No new structures greater than 2m in height shall be erected on the site without the submission of an Outline Plan pursuant to section 176A of the Resource Management Act other than those provided for in Condition 2 above, or those permitted under other nationally controlling standards or structures on the site, or any other temporary structures erected for the purposes of allowing maintenance or repair of existing structures (providing that such temporary structures will be removed once any such maintenance or repair has ceased).'

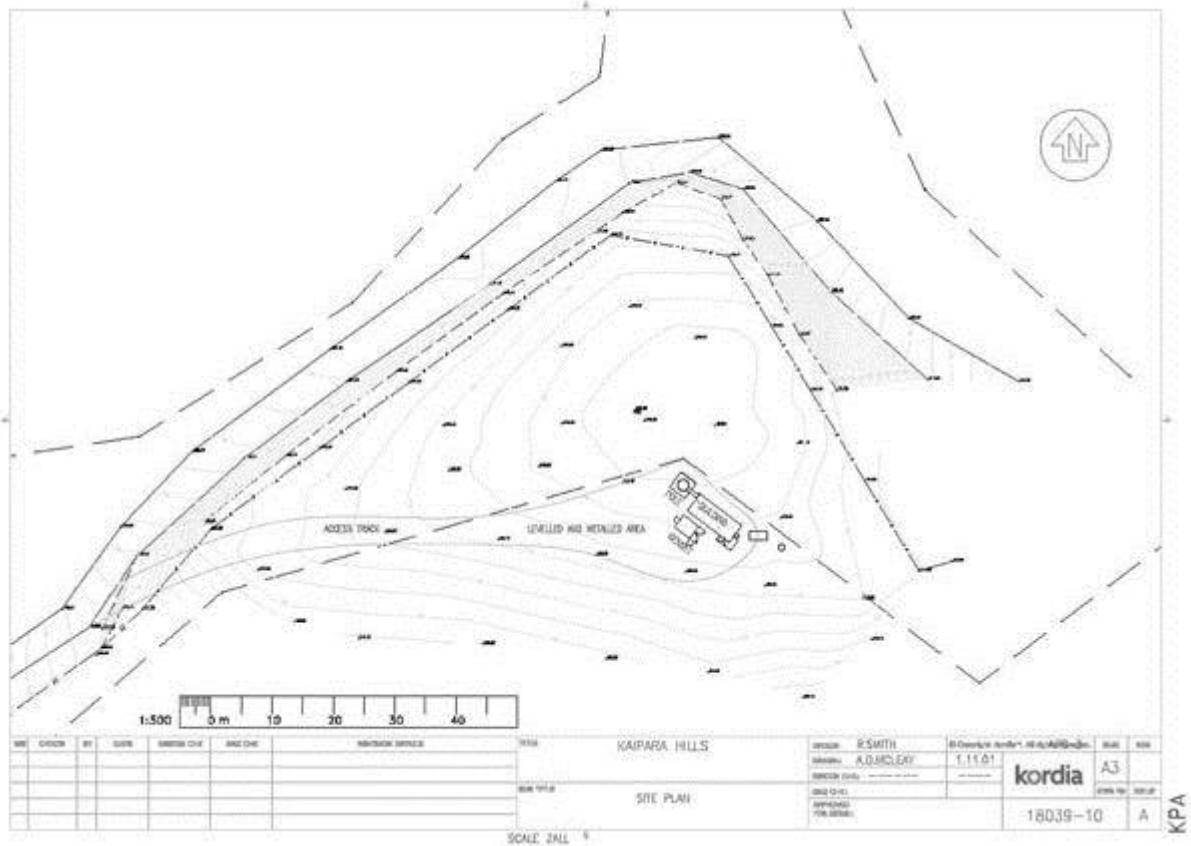
4. Radio Frequency Exposure

- a. The Broadcasting and telecommunications facility shall be operated so that it satisfies the requirements of NZS2772.1:1999 in respect of all areas to which the public may have access.

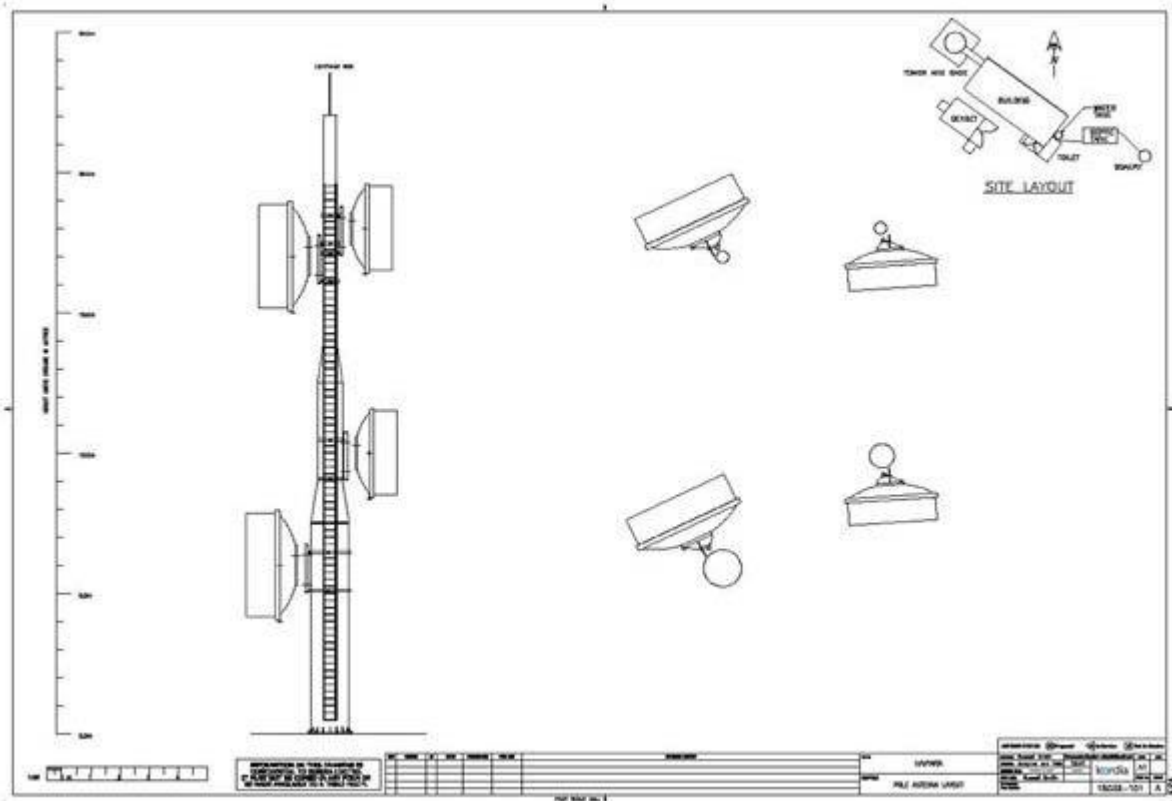
- b. A report from a suitably qualified person shall be submitted to the satisfaction of the Consents Manager within three months of the installation commencing operation, confirming that the site is operating in accordance with the NZS2772.1:1999.
- c. If the levels do not comply with NZS2772.1:1999, operation shall cease until such time as measures are put in place to ensure compliance with the standard

Attachments

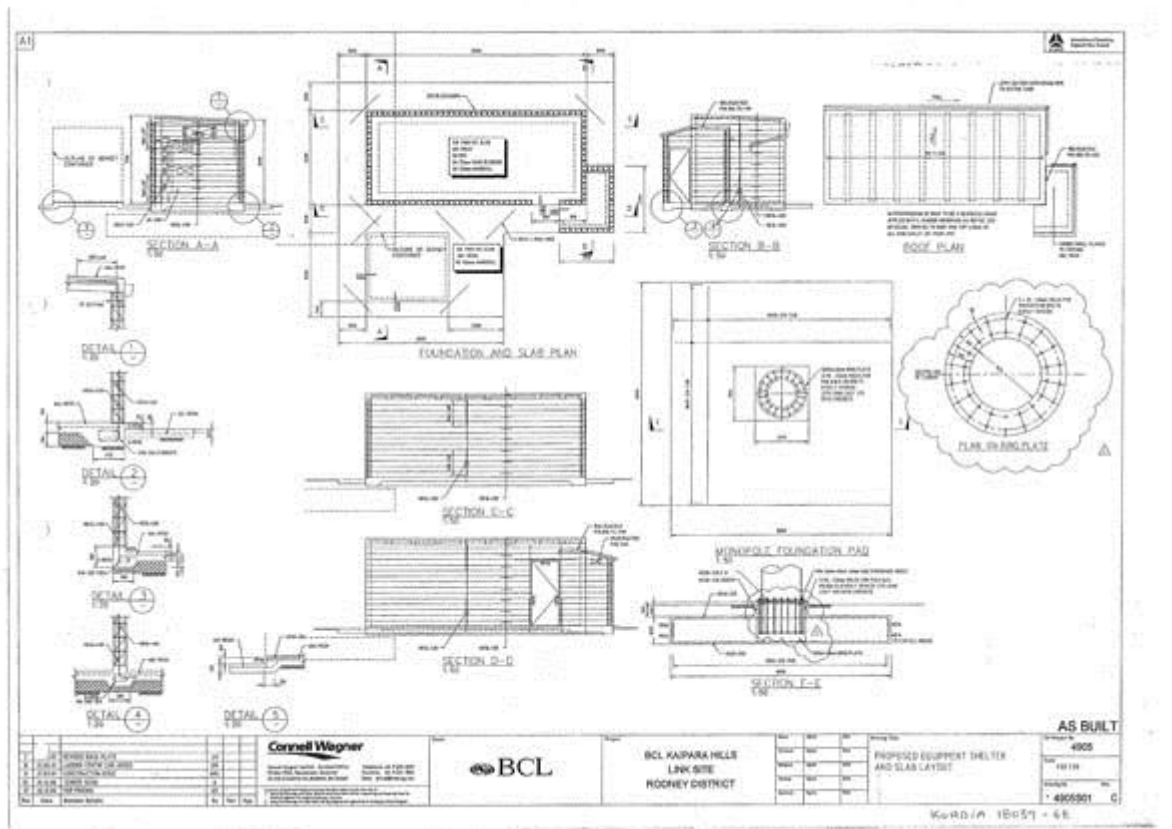
Site Plan



Pole Antennae Layout



Proposed Equipment Shelter and Slab Layout



3303 Pine Hill Broadcasting and Telecommunications Facility

Designation Number	3303
Requiring Authority	Kordia Ltd
Location	192 Browns Bay Road, Pine Hill
Roll Over Designation	Yes
Legacy Reference	Designation 184, Auckland Council District Plan (North Shore Section) 2002
Lapse Date	Given effect to (i.e. no lapse date)

Purpose

Broadcasting and telecommunications facility the continued operation of the existing broadcasting and telecommunications facility including a monopole mast of 27.5m height, a transmission building with ancillary and associated works and activities.

Conditions

1. The following equipment shall be permitted to be attached to or erected on the existing mast, on a permanent basis without the provision of any outline plan of works pursuant to section 176A of the Resource Management Act 1991:
 - a. Broadcasting, telecommunication and radio communication antennas including, whip, grid, yagi, dipoles and panels or similar ancillary equipment, but no single antenna dish or panel shall have a solid frontal surface area of greater than 0.6m² or dimension greater than 1.2m in length or 0.6m in width;
 - b. No part of an antenna may project a horizontal distance greater than 1.4m from the face of the mast measured radially on an axis from the centre of the mast to the furthestmost edge of the antenna.
2. Antennas defined in Condition 1 may only be mounted on the Mast and or the telecommunications building. No antennas or additional masts may be mounted elsewhere on the site or the access to the site from Browns Bay Road without the provision of an outline plan of works.
3. No new structures greater than 2m in height shall be erected on the site without the submission of an Outline Plan pursuant to section 176A of the Resource Management Act other than those provided for in Condition 1 above, those permitted by National Environmental Standards or structures on the site, or any other temporary structures erected for the purposes of allowing maintenance or repair of existing structures (providing that such temporary structures will be removed once any such maintenance or repair has ceased).¹
4. Structures which are either intended to replace existing structures or any temporary structures erected for the purposes of allowing maintenance or repair of existing structures are permitted (provided that such temporary structures will be removed once any such maintenance or repair has ceased).
5. Only one monopole telecommunications mast shall be on the site with a maximum height of 27.5m including any attachments (makes provision for a lightning rod).
6. The maximum area of buildings permitted on the site shall be a sum total of 40m² and shall have a height no greater than 5m above ground.
7. All new antennas shall be grey (or similar) in colour with a reflectivity less than 33% as measured by the British Standard BS5252 colour range.

8. The Broadcasting and telecommunications facility shall be operated so that it satisfies the requirements of NZS2772.1:1999 in respect of all areas to which the public may have access.

9. The noise levels generated by the activity must at all times comply with the permitted noise standards of the Auckland Unitary Plan.

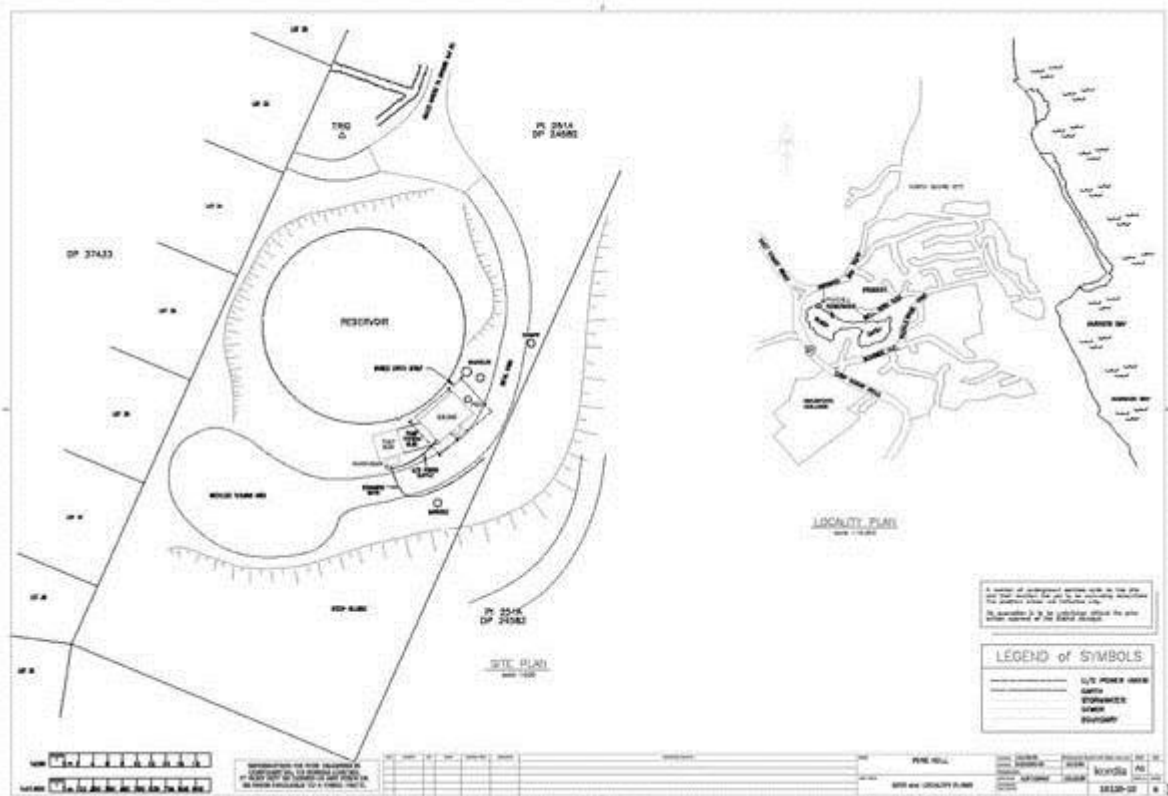
10. Kordia is responsible for ensuring that any third parties services located on the mast do not interfere with the transmission of telecommunication and radio communication services.

Advice Notes

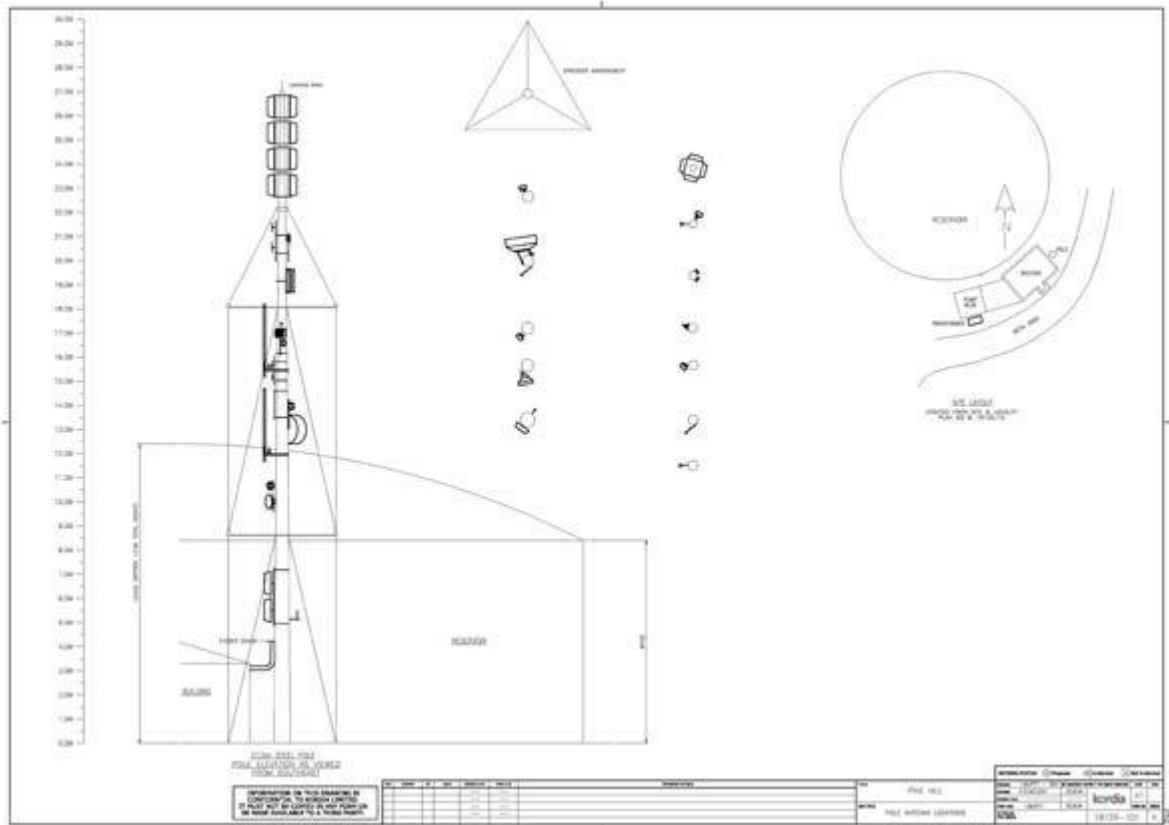
1. Any works outside the 'envelope of effects' established by the conditions of the Notice of Requirement (as above) will require an alteration to the designation to be lodged and processed in accordance with Section 181 of the Resource Management Act 1991.

Attachments

Site and Locality Plan



Pole Antennae Locations



3304 Hunua Broadcasting and Telecommunications Facility

Designation Number	3304
Requiring Authority	Kordia Ltd
Location	Repeater Road (Pt Allotment 33 Psh of Atou and Pt Allotment 65A Psh of Atou), Hunua Ranges
Roll Over Designation	Yes
Legacy Reference	Designation 17, Auckland Council District Plan (Franklin Section) 2000
Lapse Date	Given effect to (i.e. no lapse date)

Purpose

Broadcasting and telecommunications facility the continued operation of the existing broadcasting and telecommunications facility including a lattice tower of up to 28m in height, a transmission building with ancillary and associated works including power transformer, backup power generator etc.

Conditions

1. The Notice shall be given effect to in accordance with the requirement/application and assessment of effects on the environment prepared by Hey Consulting 2011 Limited, and Plans titled 'Hunua Tower Layout' being drawing number 18115101, 18115101mod and 'Hunua Site and Locality Plans' being drawing Ref 18115102.
2. An Outline Plan is not required for the addition and replacement of antennas on the existing tower provided the antenna including the mount, the shroud, and ancillary equipment shall fit within the dimensions of a square shape in plan view that, when measured from the centre of the tower base, does not increase the effective visual width of the tower by more than 50% (see attached Diagram 1).
3. No new structures greater than 2m high shall be erected on the site without submission of an Outline Plan of works pursuant to section 176A of the Resource Management Act 1991 other than the antennas or supporting infrastructure as set out in conditions 2 and 3 above or as provided for as a permitted activity in any nationally controlling standards.
4. Structures which are either intended to replace existing structures or any temporary structures erected for the purposes of allowing maintenance or repair of existing structures are permitted provided that any temporary or replaced structures are removed once any such replacement, maintenance or repair has been completed.
5. Only one telecommunications tower shall be on the site with a maximum height of **28m** including any attachments. This includes the provision for a lightning rod.
6. Radio frequency radiation emissions from the site shall comply with NZS 2772.1:1999 Radio Frequency Fields (Maximum Exposure Levels 3kHz to 300GHz).

Attachments

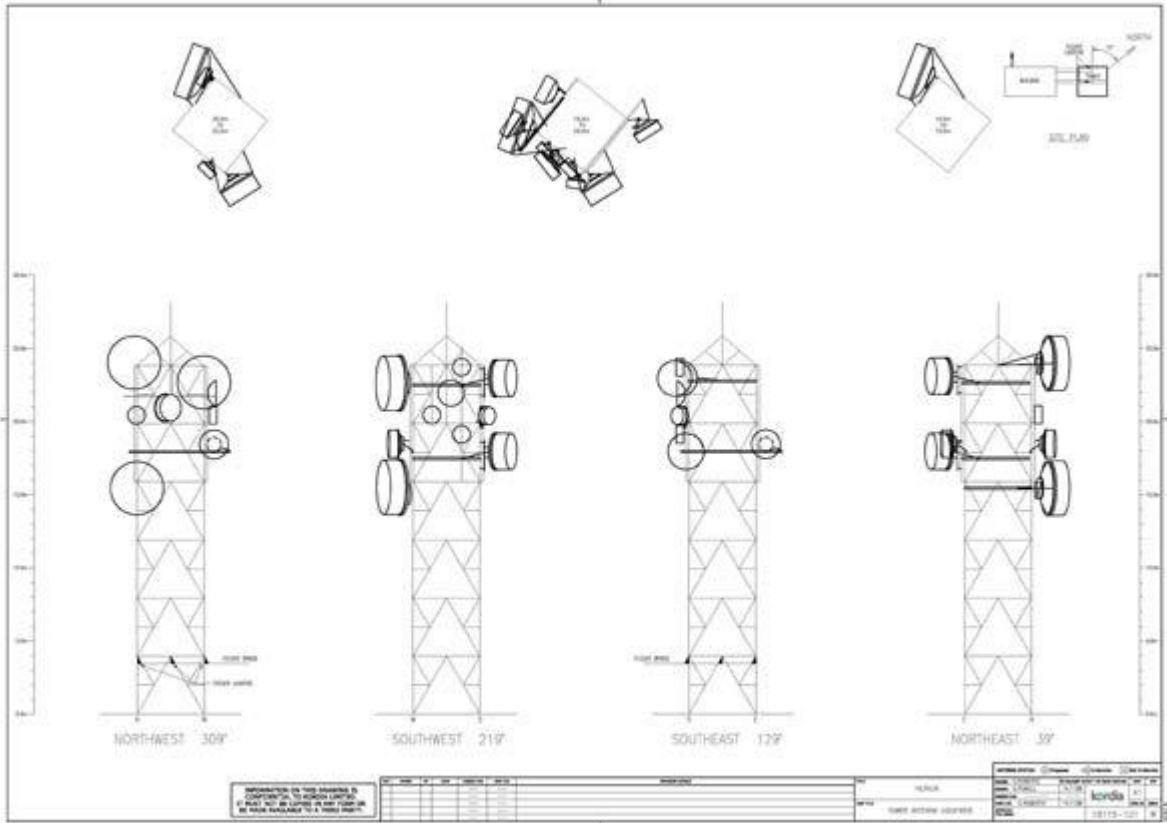
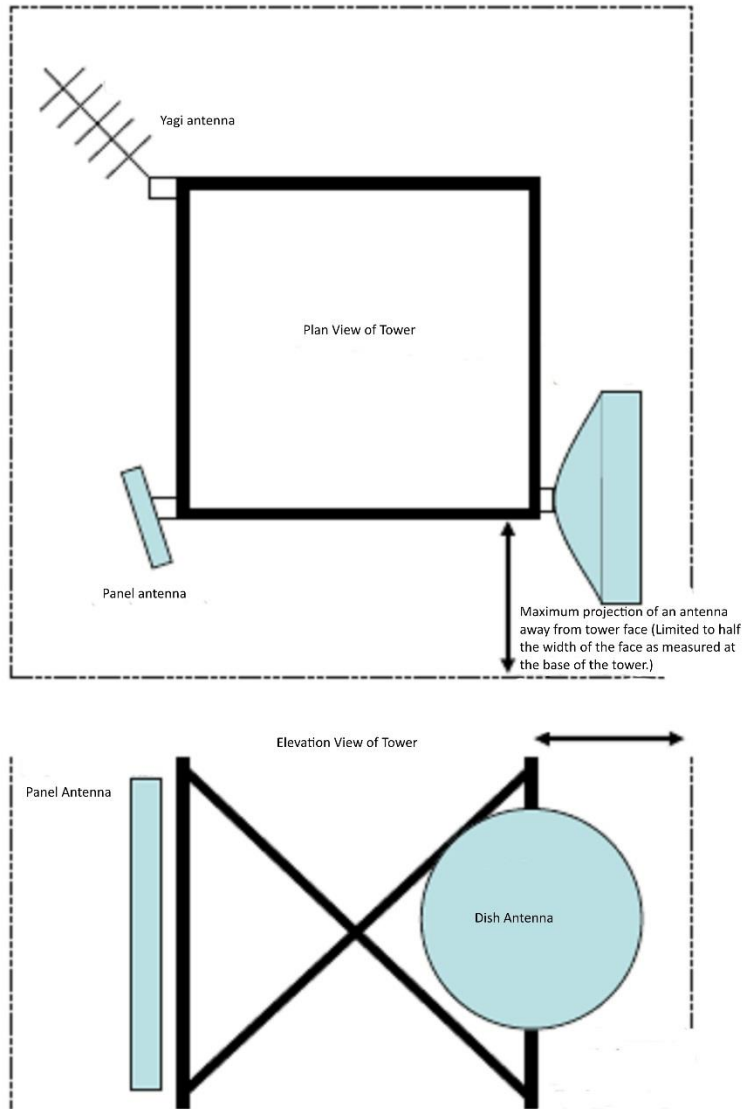


Diagram 1 - Depiction of Antenna Size Condition and Potential Effect

Depiction of Antenna Size Condition and Potential Edge Effect



3300 Microwave Transmission Corridor

Designation Number	3300
Requiring Authority	Kordia Ltd
Location	100 Victoria Street West, Auckland Central to 539 Scenic Drive, Waiaurua
Roll Over Designation	Yes
Legacy Reference	Designation 301, Auckland Council District Plan (Central Area Section) 2005; Designation B0802, Auckland Council District Plan (Isthmus Section) 1999; and Designation K2, Auckland Council District Plan (Waitakere Section) 2003
Lapse Date	Given effect to (i.e. no lapse date)

*Joint Kordia Ltd and Television New Zealand Ltd (Designation ~~300~~**8301**) designation from 100 Victoria Street West, Auckland Central to Ponsonby Road, Ponsonby. Kordia Ltd only designation from Ponsonby Road to ~~501~~**539** Scenic Drive, Waiaurua.

Purpose

Microwave transmission corridor – a protection corridor of specified height (elevation above sea level) and width through which no building, structure or tree can pass to ensure continuity of a microwave linking / transmission path from the Television New Zealand Studios at 100 Victoria Street West, Central Auckland to the Waiaurua transmission tower at 539 Scenic Drive, Waiaurua.

Conditions

1. All masts, antennas, aerials and other facilities must comply with New Zealand Standard NZS6609: 1990 or any amendments, at all times.

The following table shows, at specific points along the path of the corridor, the width of the corridor and the base height of the corridor. Intermediate widths and heights shall be determined by extending straight lines between adjacent points.

The 19.3km corridor runs between 100 Victoria Street West, Central Auckland, being 803494.03mN, 399729.84mE and 539 Scenic Drive, Waiaurua, being 794818.46mN, 382527.82mE. (Points A and E respectively in the 'Key specific points' annotation following the table)

Levels provided are in terms of Auckland Vertical Datum (MSL) 1946; Origin SM 6181 SO 53103C RL=30.645. Coordinates are in terms of Geodetic datum Mount Eden Circuit.

Path Length (KM)	Corridor Width (m)	Maximum Obstruction Height above Mean Sea Level (m)
0.000 (a)	6.8	62.6
0.025	6.8	63.0
0.050	6.8	63.4
0.075	6.8	63.8

Path Length (KM)	Corridor Width (m)	Maximum Obstruction Height above Mean Sea Level (m)
0.100	6.8	64.2
0.125	6.8	64.6
0.150	6.8	65.0
0.175	6.8	65.4
0.200	6.8	65.8
0.225	6.8	66.2
0.250	6.8	66.6
0.275	6.8	67.0
0.300	6.8	67.3
0.325	6.8	67.7
0.350	6.8	68.1
0.375	6.8	68.5
0.400	6.8	68.9
0.425	6.8	69.3
0.450	6.8	69.7
0.475	6.8	70.1
0.500	6.8	70.5
0.525	6.8	70.9
0.550	6.8	71.3
0.575	6.8	71.7
0.600	6.8	72.1
0.625	6.8	72.5
0.650	6.8	72.9
0.675	6.8	73.3
0.700	6.8	73.7
0.725	6.8	74.1
0.750	6.8	74.5
0.775	6.8	74.9
0.800	6.8	75.3
0.825	6.8	75.7
0.850	6.8	76.1
0.875	6.8	76.5
0.900	6.9	76.8
0.925	7.0	77.2

Path Length (KM)	Corridor Width (m)	Maximum Obstruction Height above Mean Sea Level (m)
0.950	7.1	77.6
0.975	7.2	77.9
1.000	7.3	78.3
1.10	7.6	79.7
1.20	7.9	81.1
1.30	8.2	82.6
1.40	8.5	84.1
1.50 (b)	8.8	85.5
1.60	9.1	87.0
1.70	9.3	88.5
1.80	9.6	90.0
1.90	9.8	91.5
2.00	10.0	93.0
2.10 (c)	10.2	94.5
2.20	10.4	96.1
2.30	10.6	97.6
2.40	10.8	99.1
2.50	11.0	100.7
2.60	11.2	102.2
2.70	11.4	103.8
2.80	11.6	105.3
2.90	11.7	106.9
3.00	11.9	108.4
3.10	12.1	110.0
3.20	12.2	111.6
3.30	12.4	113.2
3.40	12.5	114.7
3.50 (d)	12.7	116.3
3.60	12.8	117.9
3.70	12.9	119.5
3.80	13.1	121.1
3.90	13.2	122.7
4.00	13.3	124.3
4.5	13.9	132.4

Path Length (KM)	Corridor Width (m)	Maximum Obstruction Height above Mean Sea Level (m)
5.0	14.4	140.6
5.5	14.8	148.8
6.0	15.2	157.2
6.5	15.5	165.6
7.0	15.8	174.2
7.5	16.0	182.8
8.0	16.2	191.4
8.5	16.3	200.2
9.0	16.4	209.0
9.5	16.4	218.0
10.0	16.4	227.0
10.5	16.4	236.0
11.0	16.3	245.2
11.5	16.1	254.4
12.0	15.9	263.7
12.5	15.7	273.1
13.0	15.4	282.6
13.5	15.1	292.1
14.0	14.7	301.8
14.5	14.2	311.5
15.0	13.7	321.3
15.5	13.1	331.2
16.0	12.4	341.2
16.5	11.6	351.4
17.0	10.6	361.6
17.5	9.6	372.0
18.0	8.2	382.5
18.5	6.8	393.2
19.0	6.8	403.2
19.1	6.8	405.2
19.2	6.8	407.2
19.3 (e)	6.8	409.2

Key specific points:
a. Network Centre;

- b. Ponsonby Road;
- c. Corner of Richmond Road and Chamberlain Street;
- d. Corner of Old Mill Road and West View Road; and
- e. Waiaitua.

2. Any significant increase in radio frequency energy levels from this source shall comply with the Auckland City Consolidated Bylaw 1991 and any statutory regulation controlling radio frequency exposure levels.

Attachments

None.

3301 Waatarua Broadcasting and Telecommunications Facility

Designation Number	3301
Requiring Authority	Kordia Ltd
Location	539 Scenic Drive, Waiaurua
Roll Over Designation	Yes
Legacy Reference	Designation K1, Auckland Council District Plan (Waitakere Section) 2003
Lapse Date	Given effect to (i.e. no lapse date)

Purpose

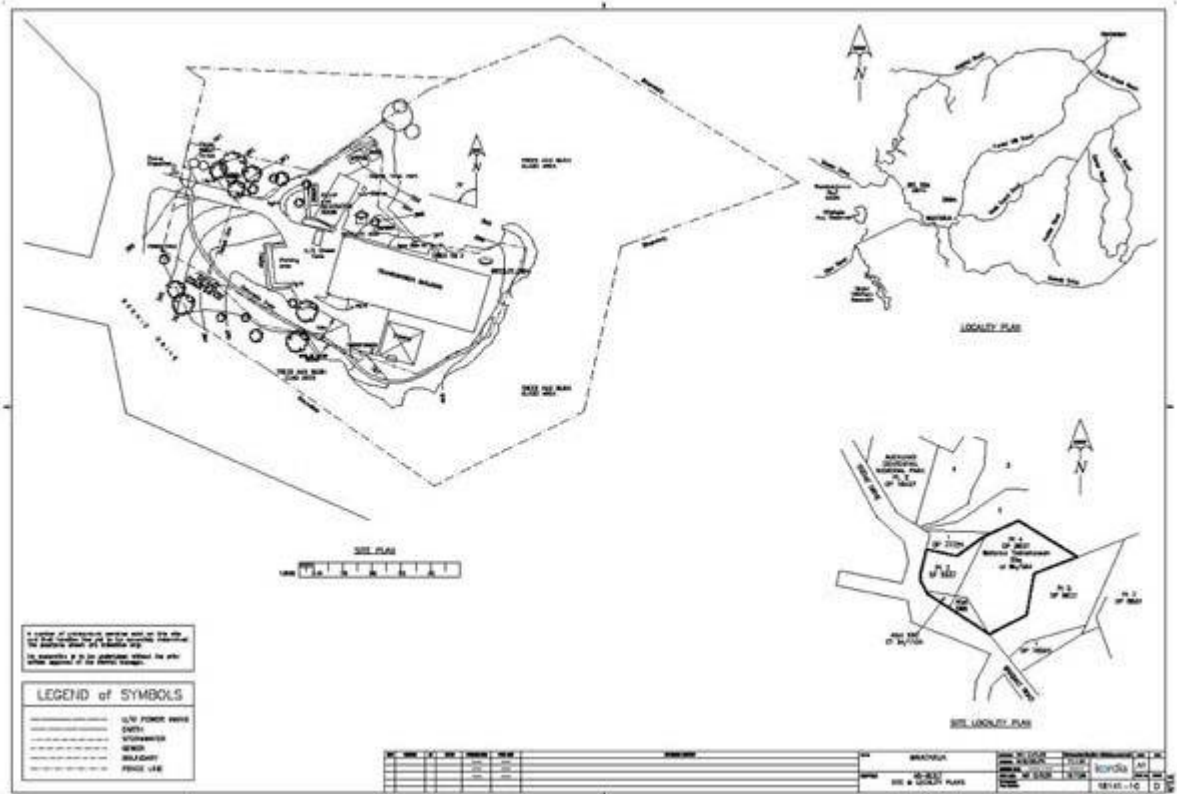
Broadcasting and telecommunications facility the continued operation of the existing broadcasting and telecommunications facility including two lattice towers of 121.9m and 27.5m height, a transmission building with roof top antenna mounting gantry, broadcasting and telecommunication antennas, and ancillary and associated works including power transformer, backup power generator etc.

Conditions

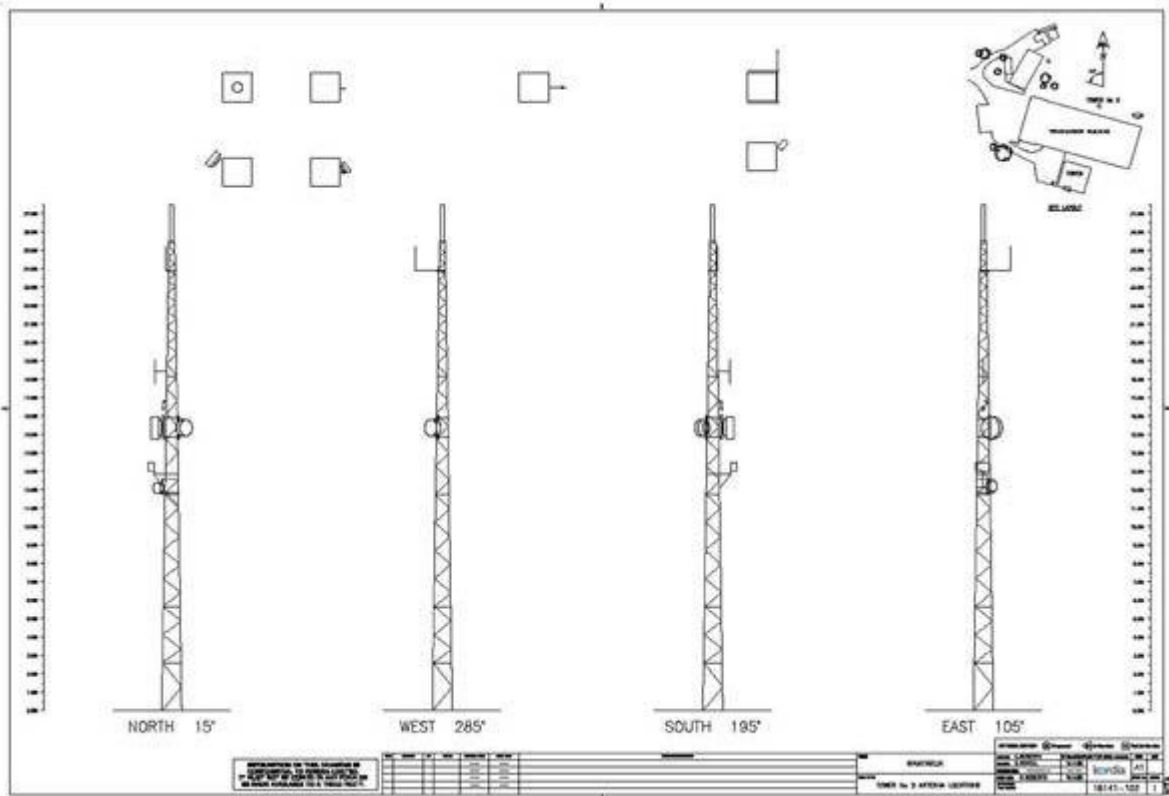
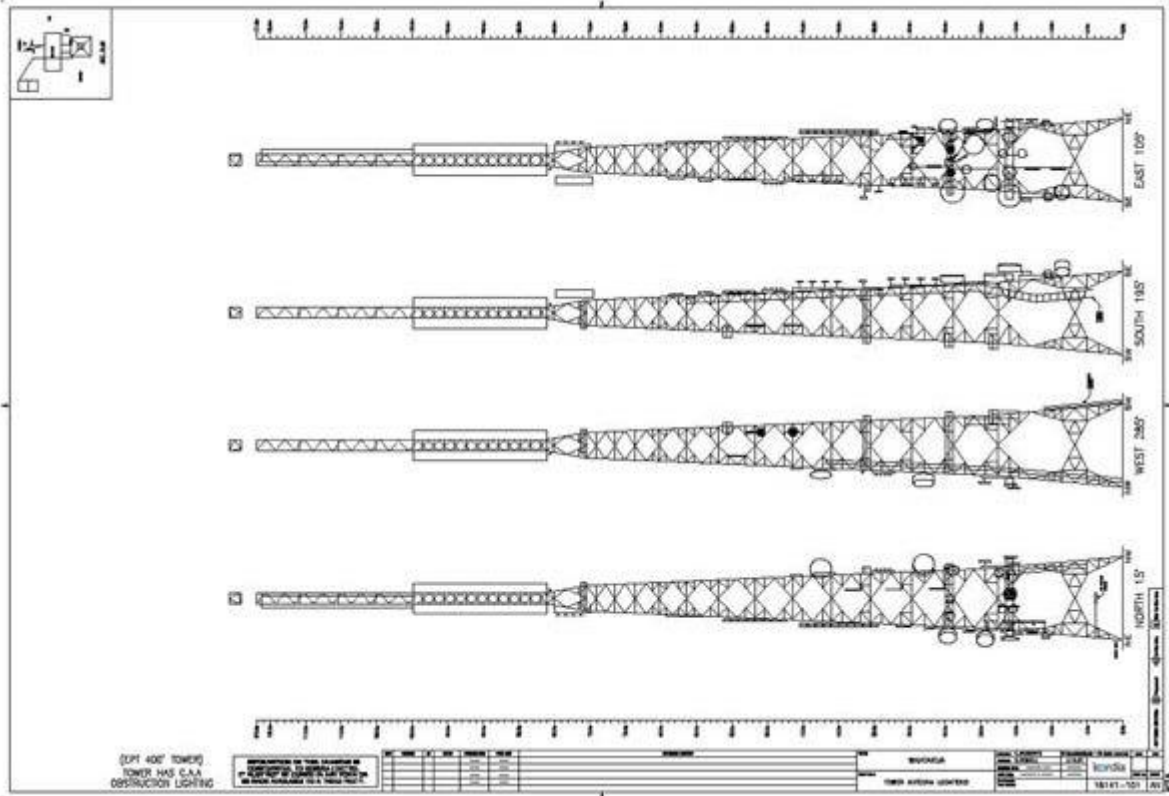
1. The Notice shall be given effect to in accordance with the requirement/application and assessment of effects on the environment prepared by Hey Consulting 2011 Limited, and Plans titled 'Waatarua Tower Layout' being drawing number 18141101, 'Waatarua Tower Locations', "Waatarua Tower No 2 Antenna Locations" 18141102, "Waatarua Building East Gantry Antenna Locations" 18141103 and "Waatarua Site Plan" being drawing Ref 18141010.
2. An Outline Plan is not required for the addition and replacement of antennas on the existing tower provided the antenna including the mount, the shroud, and ancillary equipment shall fit within the dimensions of a square shape in plan view that, when measured from the centre of the tower **base**, does not increase the effective visual width of the tower by more than 50% (see attached Diagram 1).
3. An Outline Plan is not required for the addition or replacement of antennas attached to or above the existing transmission building provided that:
 - a. No gantry, pipe mount or antenna extends to an elevation greater than 3m above the roof line of the building; and/or
 - b. No antenna affixed to a building measures greater than 1.2m in dimension.
4. No new structures **having a height of more than 2m** shall be erected on the site without submission of an Outline Plan of works pursuant to section 176A of the Resource Management Act 1991 other than the antennas **or supporting infrastructure as** set out in conditions 2 and 3 above **or as provided for by any other national standards.**
5. Structures which are either intended to replace existing structures or any temporary structures erected for the purposes of allowing maintenance or repair of existing structures are permitted provided that any temporary or replaced structures are removed once any such replacement, maintenance or repair has been completed.
6. Only two telecommunications tower shall be on the site with the main tower having a maximum height of 121.9m and a secondary tower having a maximum height of 27.5m including any attachments.
7. Radio frequency radiation emissions from the site shall comply with NZS 2772.1:1999 Radio Frequency Fields (Maximum Exposure Levels 3kHz to 300GHz).

Attachments

Site and Locality Plan



Tower elevations (Main and Secondary Towers)



Building East Gantry Antenna Locations

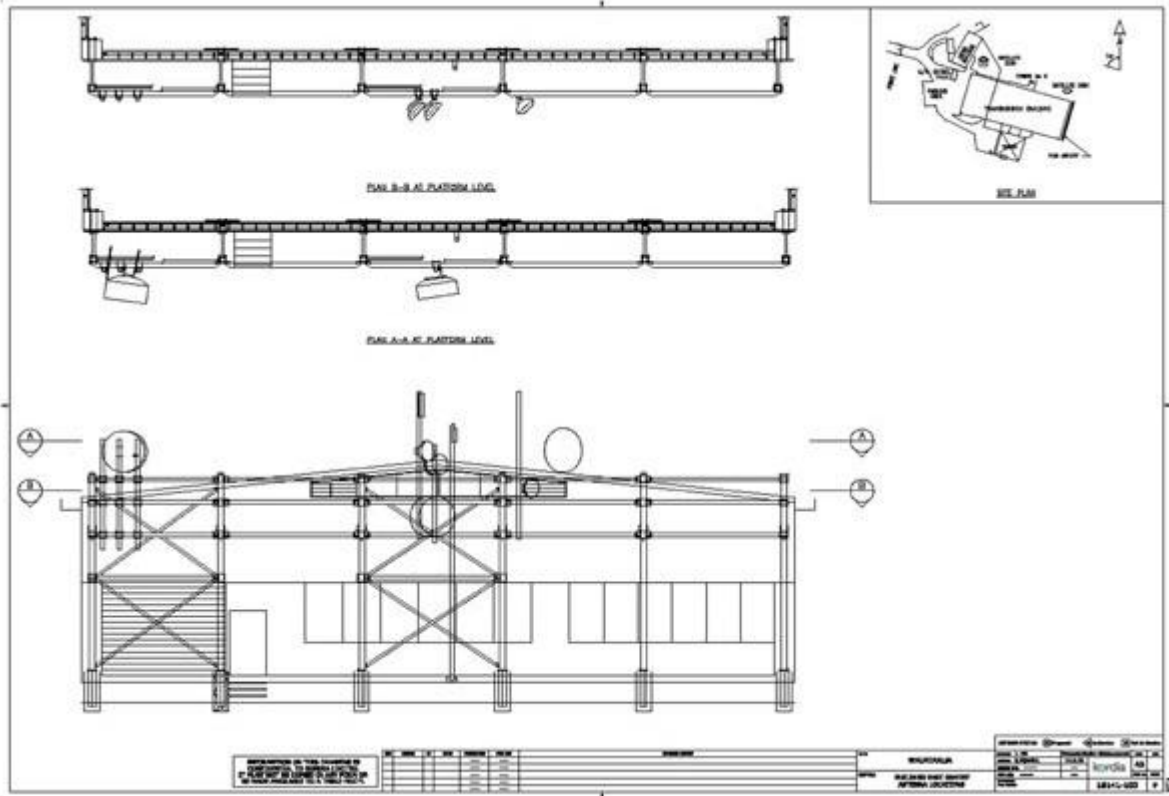
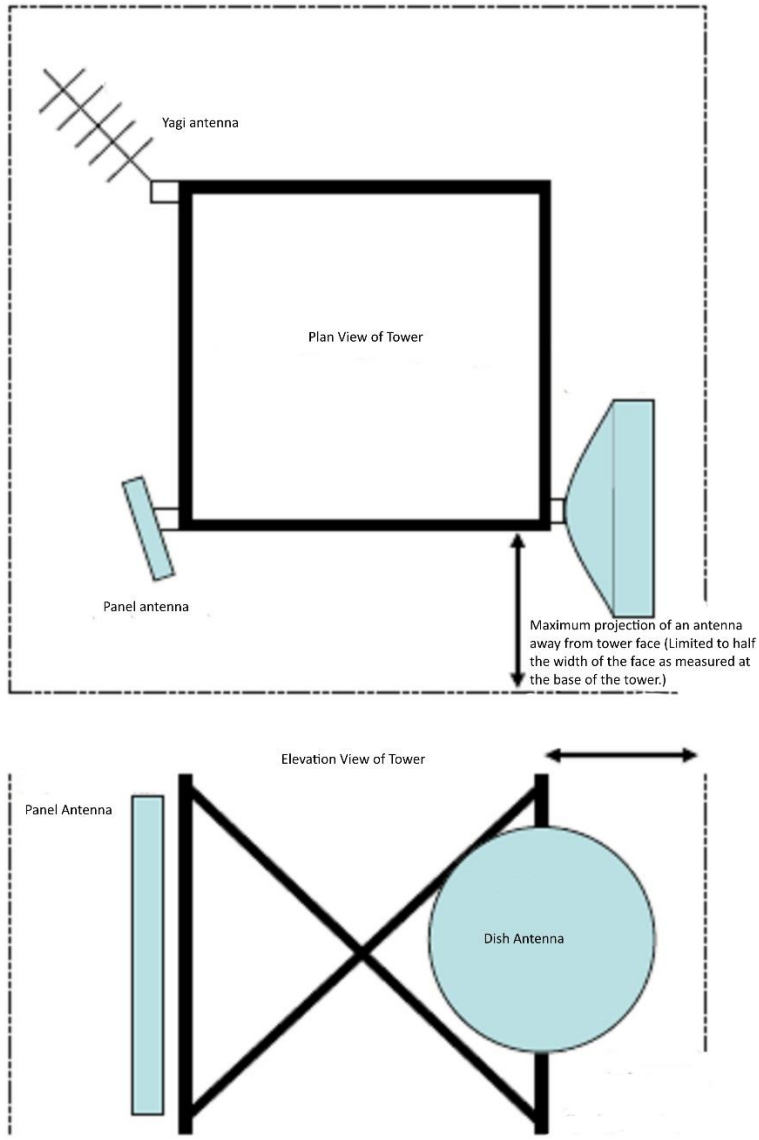


Diagram 1 - Depiction of Antenna Size Condition and Potential Effect

Depiction of Antenna Size Condition and Potential Edge Effect



3302 Kaipara Hills Broadcasting and Telecommunications Facility

Designation Number	3302
Requiring Authority	Kordia Ltd
Location	Kaipara Hills Road, (Pt allotment 201 Psh Tauhoa) Kaipara Hills
Roll Over Designation	Yes
Legacy Reference	Designation 970, Auckland Council District Plan (Rodney Section) 2011
Lapse Date	Given effect to (i.e. no lapse date)

Purpose

Broadcasting and telecommunications facility – the continued operation of the existing broadcasting and telecommunications facility including a monopole mast of 23m height, a transmission building with ancillary and associated works including power transformer, backup power generator etc.

Conditions

1. General

The activity shall proceed in general accordance with the Notice Of Requirement submitted to council, dated 31st August 2000, and attached plans drawn by Connell Wagner Ltd, Numbered 4290NT/A01, A02, C01, C02, and C03, and plans drawn by WoodwardClyde (NZ) Ltd Numbered AA28110026/01/A001 and AA28110026/01/S001 including the recessive colour scheme proposed.

2. Additional Equipment

The following equipment shall be permitted to be attached to or erected on the mast and associated structures or elsewhere on the site, on a permanent basis without the provision of an Outline Plan pursuant to section 176A of the Resource Management Act in terms of conditions 1 above:

- a. A steel unipole mast of up to 23m height with an additional 2m lightning rod located at the top of the mast;
- b. Up to six (6) dish antennas with a diameter greater than 2.5m, but less than 5.0m;
- c. Broadcasting, telecommunication and radio communication antennas including whip, grid, yagi, dipoles and panels or similar ancillary equipment, but no single antenna shall have a solid frontal surface area of greater than 5.0m² or 2.5m in diameter in the case of dish antennas unless otherwise specified in (b) above;
- d. Up to two single storey equipment shelters with a combined floor area of less than 50m²; and
- e. A vehicular access track between the level area of the proposed mast and the road adjacent together with an area for parking and turning adjacent to the main structures.

3. New Structures

'No new structures **greater than 2m in height** shall be erected on the site without the submission of an Outline Plan pursuant to section 176A of the Resource Management Act other than those provided for in Condition 2 above, **or those permitted under other nationally controlling standards** or structures on the site, or any other temporary structures erected for the purposes of allowing maintenance or repair of existing structures (providing that such temporary structures will be removed once any such maintenance or repair has ceased).'

4. Radio Frequency Exposure

- a. The Broadcasting and telecommunications facility shall be operated so that it satisfies the requirements of NZS2772.1:1999 in respect of all areas to which the public may have access.

- b. A report from a suitably qualified person shall be submitted to the satisfaction of the Consents Manager within three months of the installation commencing operation, confirming that the site is operating in accordance with the NZS2772.1:1999.
- c. If the levels do not comply with NZS2772.1:1999, operation shall cease until such time as measures are put in place to ensure compliance with the standard

5. Landscaping

~~A landscape plan and ongoing plant maintenance programme, involving screen planting of indigenous shrubs and small trees around the facility, with the intent of providing screening for the ancillary buildings and compound, shall be submitted to the Consents Manager, within six months of the date of commencement of the work on the site for the designation. This landscape planting is to form a continuation of the existing vegetation, which extends down the southern slopes of the site. Planting shall be completed by the end of the first planting season following the commencement of work on the site.~~

6. Archaeological Sites

~~In the event of an archaeological site being uncovered work is to cease immediately in the vicinity of the discovery and the NZ Historic Places trust is to be contacted so that appropriate action can be taken before work may recommence.~~

7. Silt Retention

~~Before commencement of any works, adequate silt retention structures as detailed in the Auckland Council Technical Publication No. 90 "Erosion and Sediment Control Guidelines for Land Disturbing Activities in the Auckland Region" shall be installed. These structures shall be maintained and cleaned out as necessary until such time as complete grass cover or other nonerodible surfacing, has been re-established over the site.~~

8. Access and Parking

~~All access, parking and manoeuvring areas shall be formed to a permanent all weather metalled standard to the dimensions set out in the council's "Standards for Engineering Design and Construction", prior to the commencement of the activity.~~

Note:

~~A geotechnical report will be required to be submitted with the application for Building Consent. The report shall address the stability of the site and the control of stormwater from the creation of an impermeable surface.~~

Note:

~~The Requiring Authority is advised that the site on which the proposed development is situated could be subject to Natural Hazards that may require the Council to invoke a s36(2) Notice Pursuant to the Building Act 1991 at the time a Building Consent is issued for any structure on the land.~~

9. Administration Fee

~~The applicant shall pay to Council the administrative fee for processing of this Notice of Requirement within one month of the requirement being confirmed or prior to the us commencing, whichever is the sooner.~~

10. Monitoring Condition

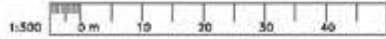
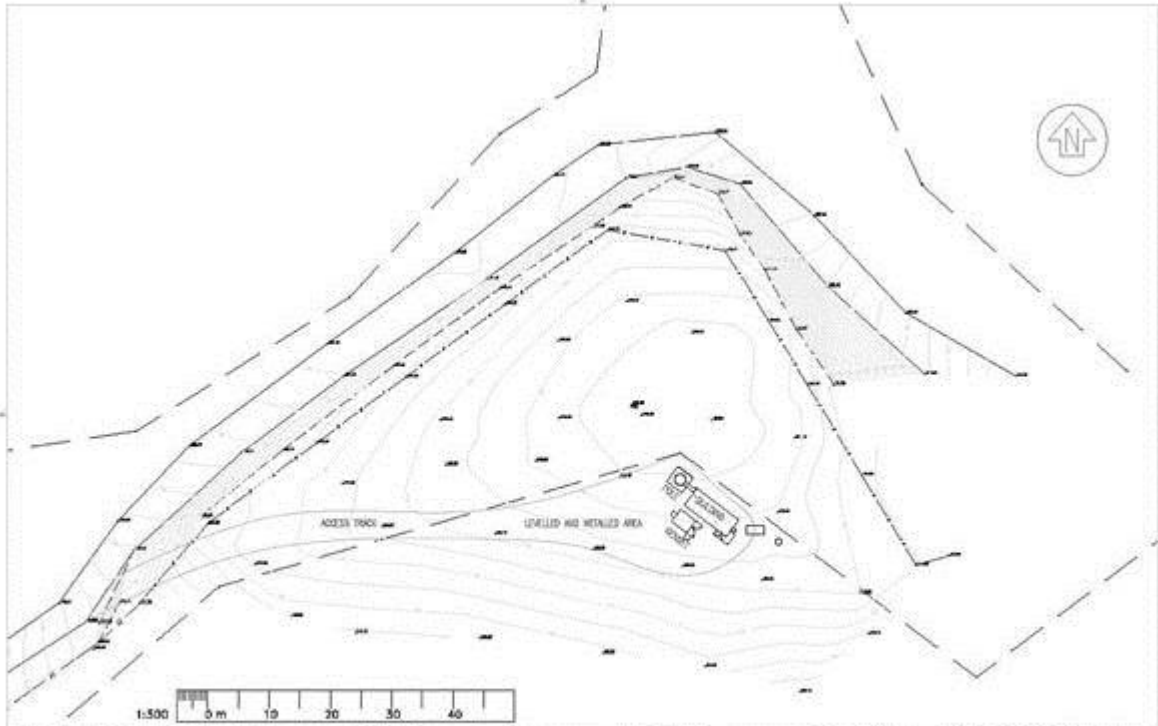
~~The applicant shall pay to Council a monitoring charge of the actual and reasonable costs to be paid within one month of the Requirement being Confirmed or prior to the Activity commencing/prior to any site works commencing/whichever is the sooner.~~

Note:

~~Please note that this charge covers on site visit only. Should other site visits/works be required to ensure compliance, then further charges will be payable as set out in Council's "Schedule of Fees and Charges".~~

Attachments

Site Plan

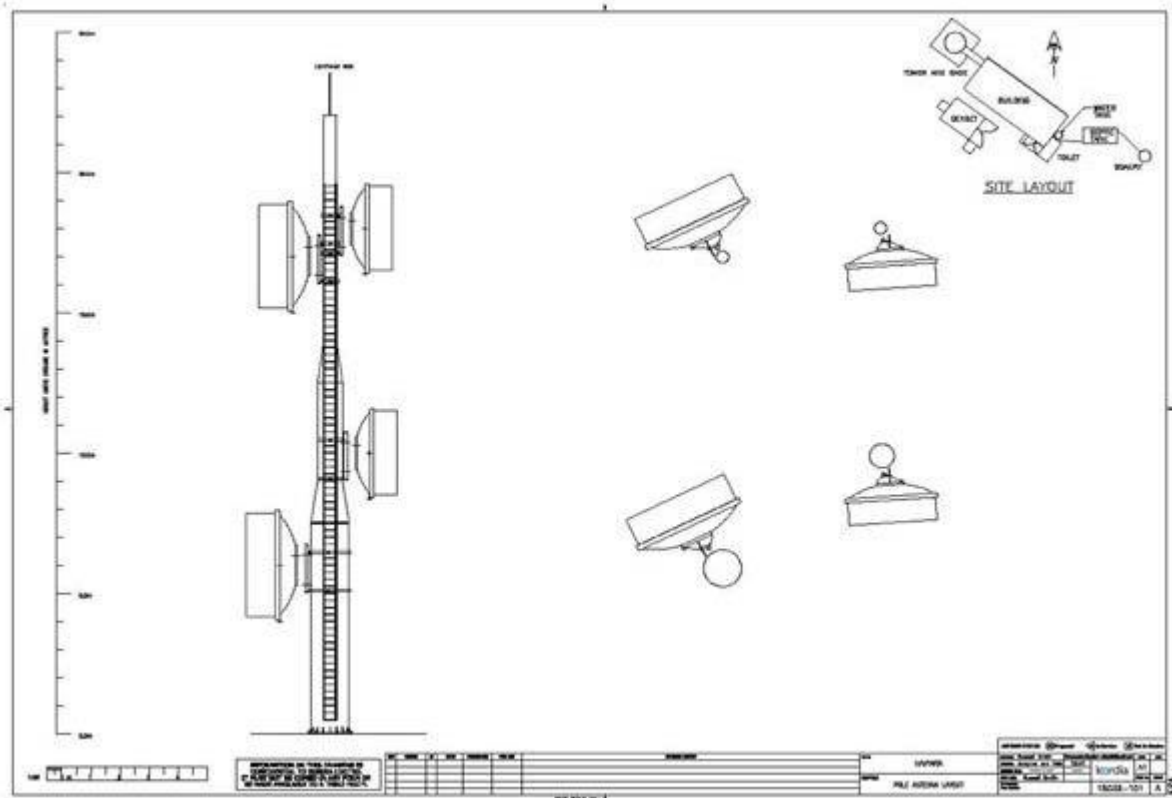


NO.	CHGK	BY	DATE	REVISION CHG	REASON CHG	REVISION SYMBOL	DATE	KARAPA HILLS	DESIGNER	R. SMITH	PROJECT NUMBER	18039-10	DATE	2018
									DRAWN	A. DUNCAN	SCALE	1:500	SIZE	A3
								SITE PLAN	DATE CHG					
									APPROVED					
									FOR ISSUE					

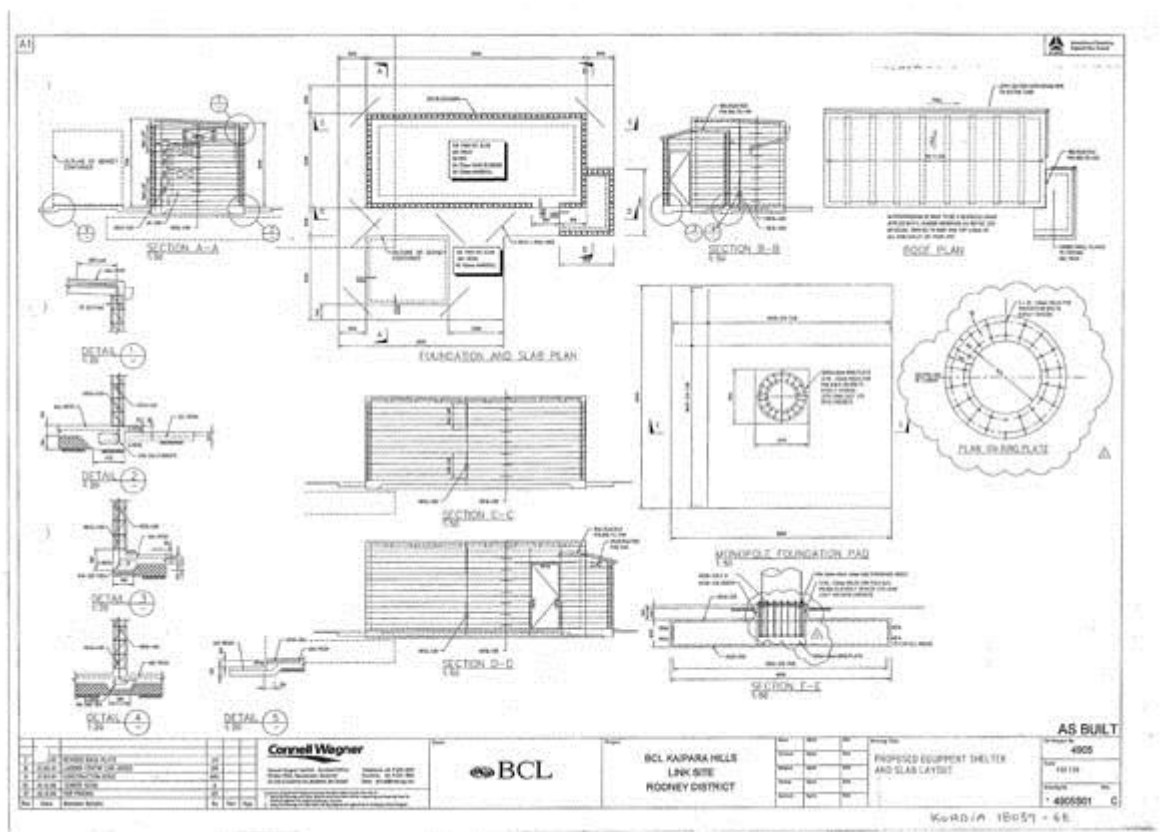
SCALE 1:500

KPA

Pole Antennae Layout



Proposed Equipment Shelter and Slab Layout



3303 Pine Hill Broadcasting and Telecommunications Facility

Designation Number	3303
Requiring Authority	Kordia Ltd
Location	192 Browns Bay Road, Pine Hill
Roll Over Designation	Yes
Legacy Reference	Designation 184, Auckland Council District Plan (North Shore Section) 2002
Lapse Date	Given effect to (i.e. no lapse date)

Purpose

Broadcasting and telecommunications facility the continued operation of the existing broadcasting and telecommunications facility including a monopole mast of 27.5m height, a transmission building with ancillary and associated works and activities.

Conditions

1. The following equipment shall be permitted to be attached to or erected on the existing mast, on a permanent basis without the provision of any outline plan of works pursuant to section 176A of the Resource Management Act 1991:
 - a. Broadcasting, telecommunication and radio communication antennas including, whip, grid, yagi, dipoles and panels or similar ancillary equipment, but no single antenna dish or panel shall have a solid frontal surface area of greater than 0.6m² or dimension greater than 1.2m in length or 0.6m in width;
 - b. ~~Any dish shaped antenna greater than 0.3m in diameter must be attached to the mast at an elevation no greater than 18m;~~
 - c. ~~Up to two dish shaped antennas of 1.2m in diameter at a max height above ground of 14m; and~~
 - d. No part of an antenna may project a horizontal distance greater than 1.4m from the face of the mast measured radially on an axis from the centre of the mast to the furthest edge of the antenna.
2. Antennas **defined in Condition 1** may only be mounted on the Mast and or the telecommunications building. No antennas or additional masts may be mounted elsewhere on the site or the access to the site from Browns Bay Road **without the provision of an outline plan of works.**
3. No new structures **greater than 2m in height** shall be erected on the site without the submission of an Outline Plan pursuant to section 176A of the Resource Management Act other than those provided for in Condition 1 above, **those permitted by National Environmental Standards** or structures on the site, or any other temporary structures erected for the purposes of allowing maintenance or repair of existing structures (providing that such temporary structures will be removed once any such maintenance or repair has ceased).¹
4. Structures which are either intended to replace existing structures or any temporary structures erected for the purposes of allowing maintenance or repair of existing structures are permitted (provided that such temporary structures will be removed once any such maintenance or repair has ceased).
5. Only one monopole telecommunications mast shall be on the site with a maximum height of 27.5m including any attachments (makes provision for a lightning rod).
6. The maximum area of buildings permitted on the site shall be a sum total of 40m² and shall have a height no greater than 5m above ground.

7. All new antennas shall be grey (or similar) in colour with a reflectivity less than 33% as measured by the British Standard BS5252 colour range.

8. **The Broadcasting and telecommunications facility shall be operated so that it satisfies the requirements of NZS2772.1:1999 in respect of all areas to which the public may have access. Radio frequency radiation emissions shall comply with Resource Management (National Environmental Standards for Telecommunication Facilities) Regulations 2008 — Clause 4 Telecommunication facilities generating radiofrequency fields.**

9. The noise levels generated by the activity must at all times comply with section 10.5 of the Auckland Council District Plan (North Shore Section) 2002. **the permitted noise standards of the Auckland Unitary Plan.**

10. ~~Kordia shall retain financial responsibility for all equipment and telecommunications activities from the site either through commercial agreement with clients or ownership of equipment.~~

10. Kordia is responsible for ensuring that any third parties services located on the mast do not interfere with the transmission of telecommunication and radio communication services.

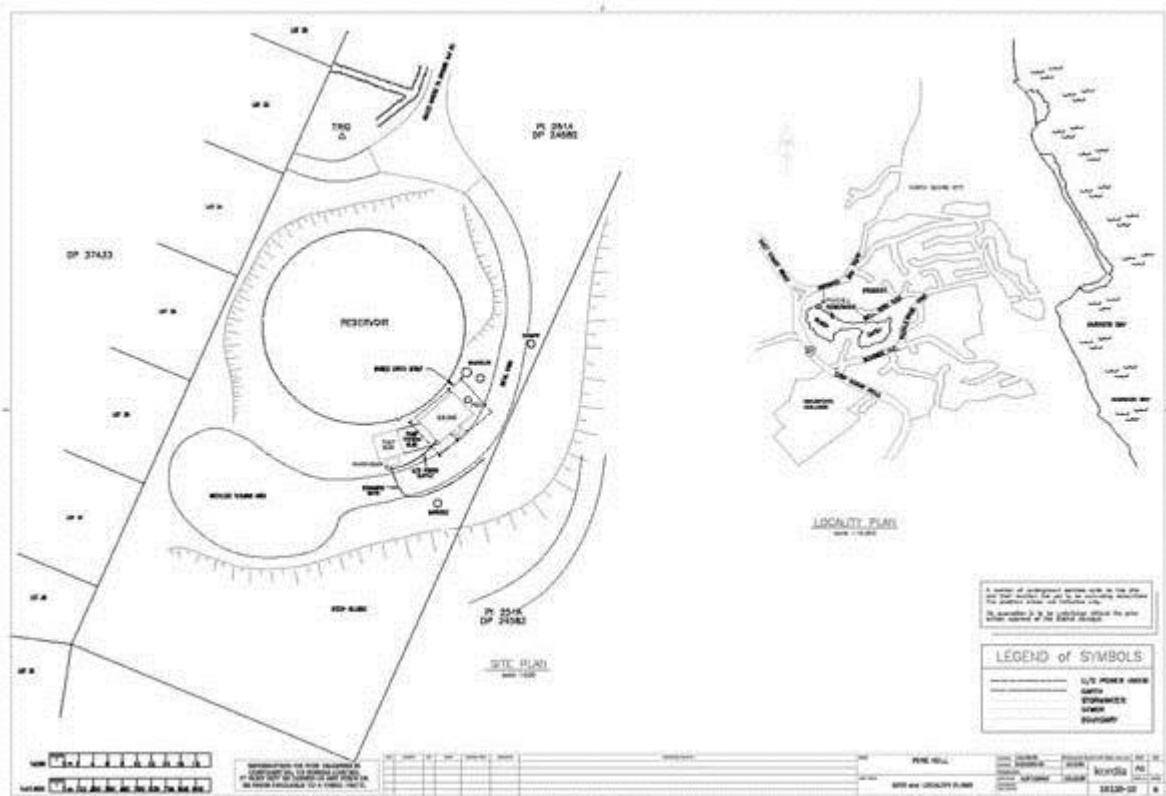
Advice Notes

1. Any works outside the 'envelope of effects' established by the conditions of the Notice of Requirement (as above) will require an alteration to the designation to be lodged and processed in accordance with Section 181 of the Resource Management Act 1991.

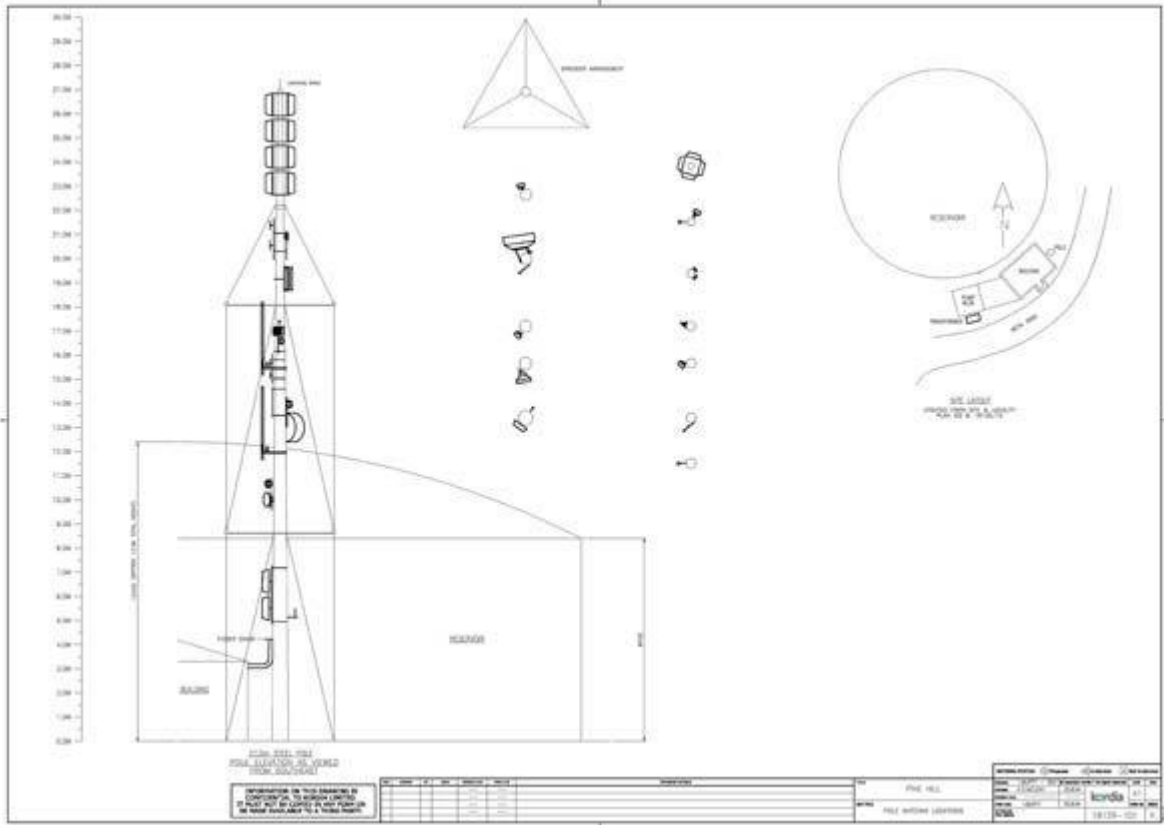
2. ~~Prior to undertaking any works on site the applicant/requiring authority must first obtain written consent from Water Care Services Limited who are responsible for the underlying designation with 'prior status' (Designation 102) in accordance with Section 176 of the Resource Management Act 1991.~~

Attachments

Site and Locality Plan



Pole Antennae Locations



3304 Hunua Broadcasting and Telecommunications Facility

Designation Number	3304
Requiring Authority	Kordia Ltd
Location	Repeater Road (Pt Allotment 33 Psh of Atou and Pt Allotment 65A Psh of Atou), Hunua Ranges
Roll Over Designation	Yes
Legacy Reference	Designation 17, Auckland Council District Plan (Franklin Section) 2000
Lapse Date	Given effect to (i.e. no lapse date)

Purpose

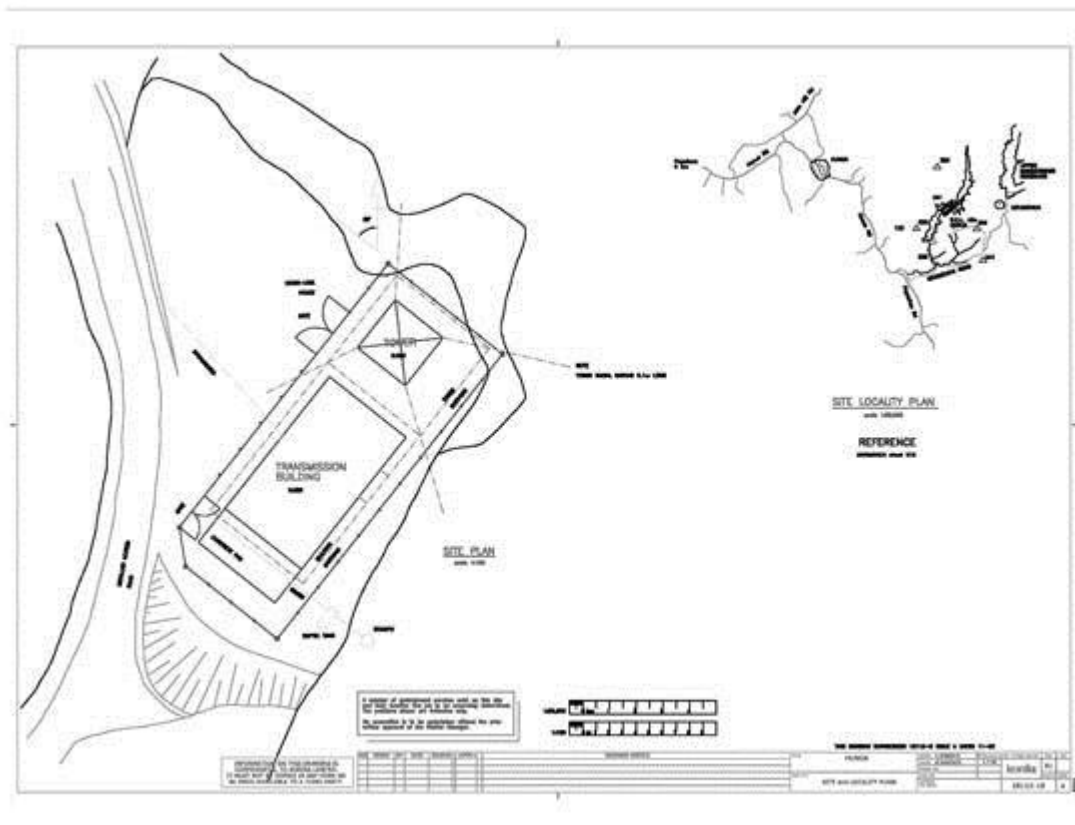
Broadcasting and telecommunications facility the continued operation of the existing broadcasting and telecommunications facility including a lattice tower of **up to 28m in 20m** height, a transmission building with ancillary and associated works including power transformer, backup power generator etc.

Conditions

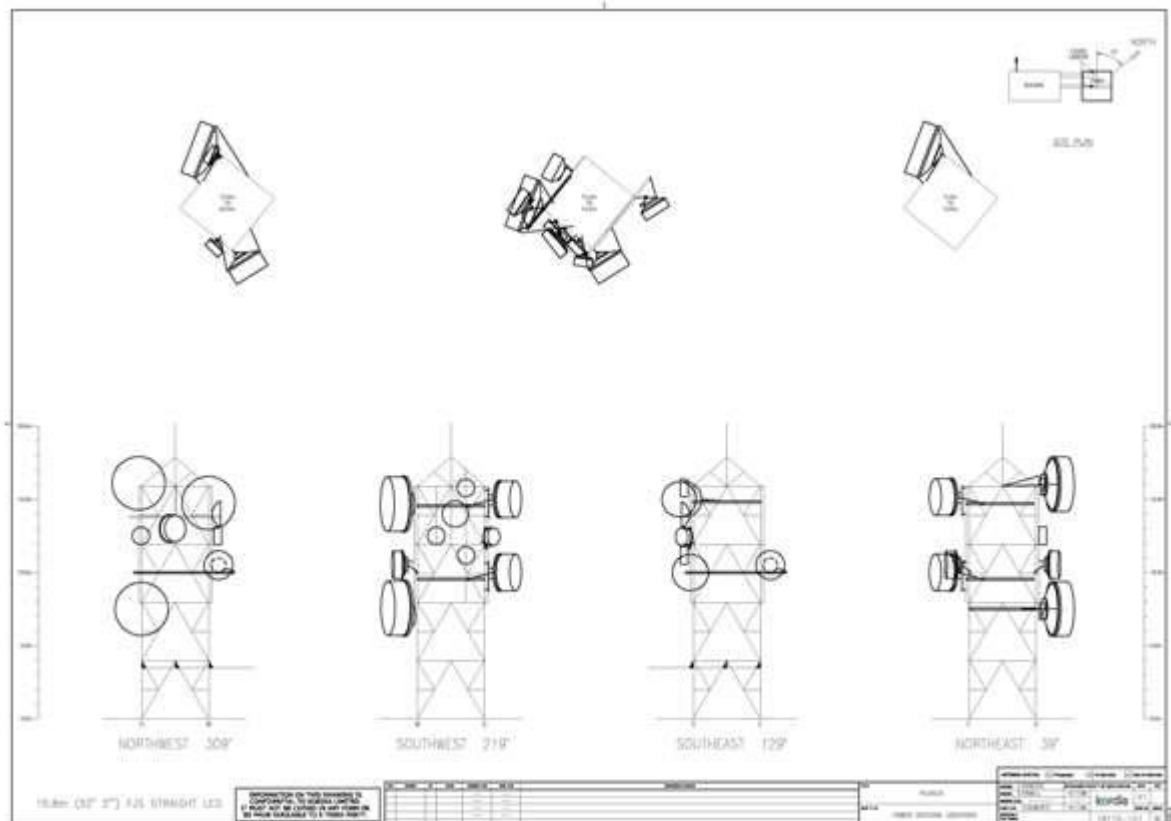
1. The Notice shall be given effect to in accordance with the requirement/application and assessment of effects on the environment prepared by Hey Consulting 2011 Limited, and Plans titled 'Hunua Tower Layout' being drawing number 18115101, 18115101mod and 'Hunua Site and Locality Plans' being drawing Ref 18115102.
2. An Outline Plan is not required for the addition and replacement of antennas on the existing tower provided the antenna including the mount, the shroud, and ancillary equipment shall fit within the dimensions of a square shape in plan view that, when measured from the centre of the tower **base**, does not increase the effective visual width of the tower by more than 50% (see attached Diagram 1).
3. No new structures **greater than 2m high** shall be erected on the site without submission of an Outline Plan of works pursuant to section 176A of the Resource Management Act 1991 other than the antennas **or supporting infrastructure as** set out in conditions 2 and 3 above **or as provided for as a permitted activity in any nationally controlling standards.**
4. Structures which are either intended to replace existing structures or any temporary structures erected for the purposes of allowing maintenance or repair of existing structures are permitted provided that any temporary or replaced structures are removed once any such replacement, maintenance or repair has been completed.
5. Only one telecommunications tower shall be on the site with a maximum height of **30m 20m** including any attachments. This includes the provision for a lightning rod.
6. Radio frequency radiation emissions from the site shall comply with NZS 2772.1:1999 Radio Frequency Fields (Maximum Exposure Levels 3kHz to 300GHz).

Attachments

Site and Locality Plan



Tower Antennae Locations



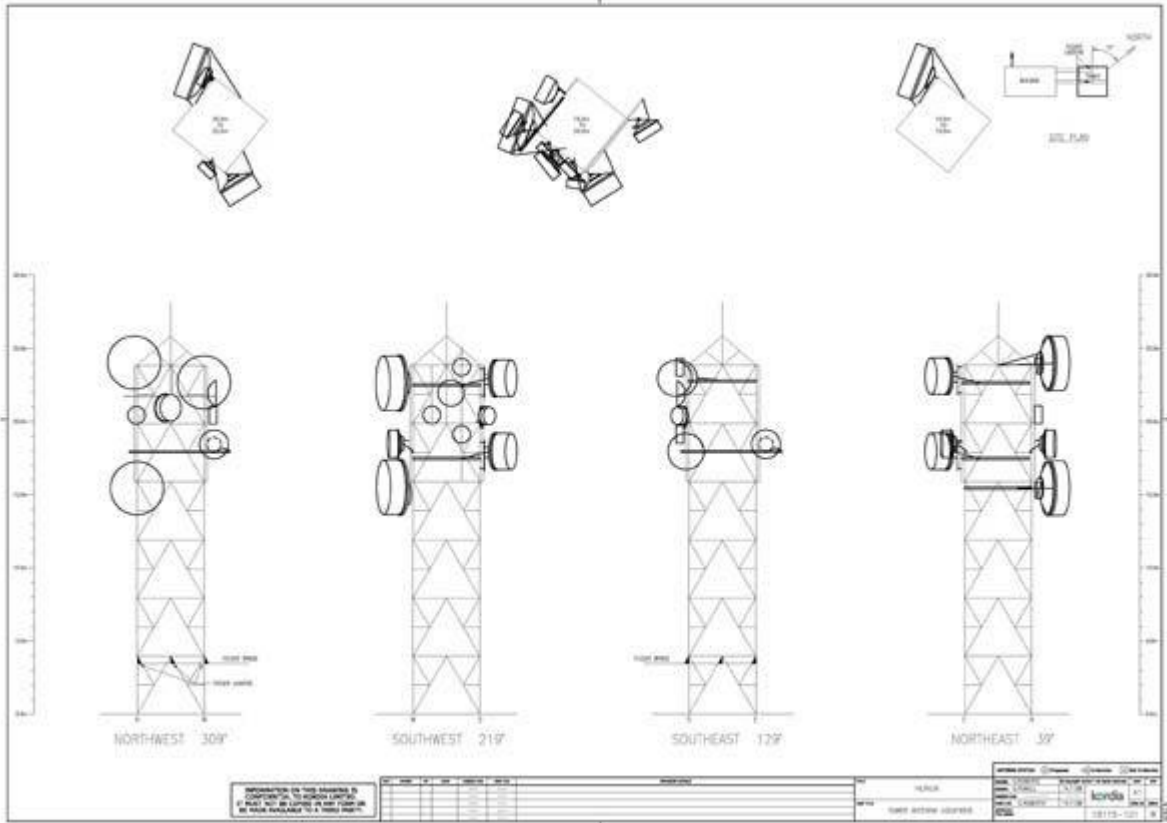


Diagram 1 - Depiction of Antenna Size Condition and Potential Effect

Depiction of Antenna Size Condition and Potential Edge Effect

