
MEMORANDUM**FILE REF****TO** Phill Reid, Manager Planning – Auckland-wide**FROM** Marilyn Ford – Planner, Auckland-wide**DATE** 2 March 2016**SUBJECT** **Inclusion of designation 622 to the GIS viewer of the Auckland Unitary Plan Operative in part**

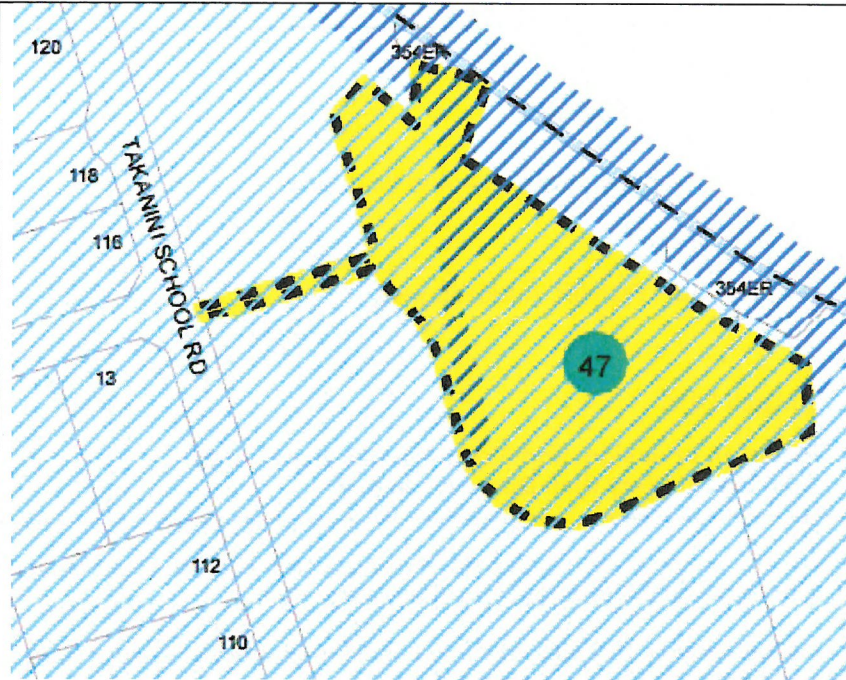
This memorandum concerns an update to the Auckland Unitary Plan Operative in part for amendments to designation 622 (Popes Road Stormwater Pond).

Auckland Council designation 622 was confirmed on 21 February 2013 under section 168A(4) of the Resource Management Act 1991 and updated into the Papakura Section of the Auckland Council District Plan as designation 47 however the mapping was not rolled over into the Proposed Auckland Unitary Plan.

As a result of this designation not being rolled over into the GIS viewer of the Proposed Auckland Unitary Plan, it was not included in the GIS viewer of the Auckland Unitary Plan Operative in part. No amendments to the text of 622 is necessary

The amendment to designation 622 is set out below:

Rule or Section of Plan	N/A
Subject Site (if applicable):	2 and 22 Popes Road, Takanini
Legal Description (if applicable):	Lot 2 DP 136772 and Lot 1 DP 163055
Relevant Plan Text:	No changes to text
Nature of Amendment	Addition of designation 622 to Auckland Unitary Plan Operative in part GIS Viewer
Changes required to be made	The snippet below shows designation 47 on map C2 of the Papakura Section of the Auckland Council District plan.



The snippet below shows the Auckland Unitary Plan Operative in part GIS viewer without designation 622.



The mapped data from the Papakura Section of the Auckland Council District Plan needs to be rolled over into the Auckland Unitary Plan Operative in Part

Prepared by: Marilyn Ford – Planner, Auckland-wide

Signature: *M. Ford*

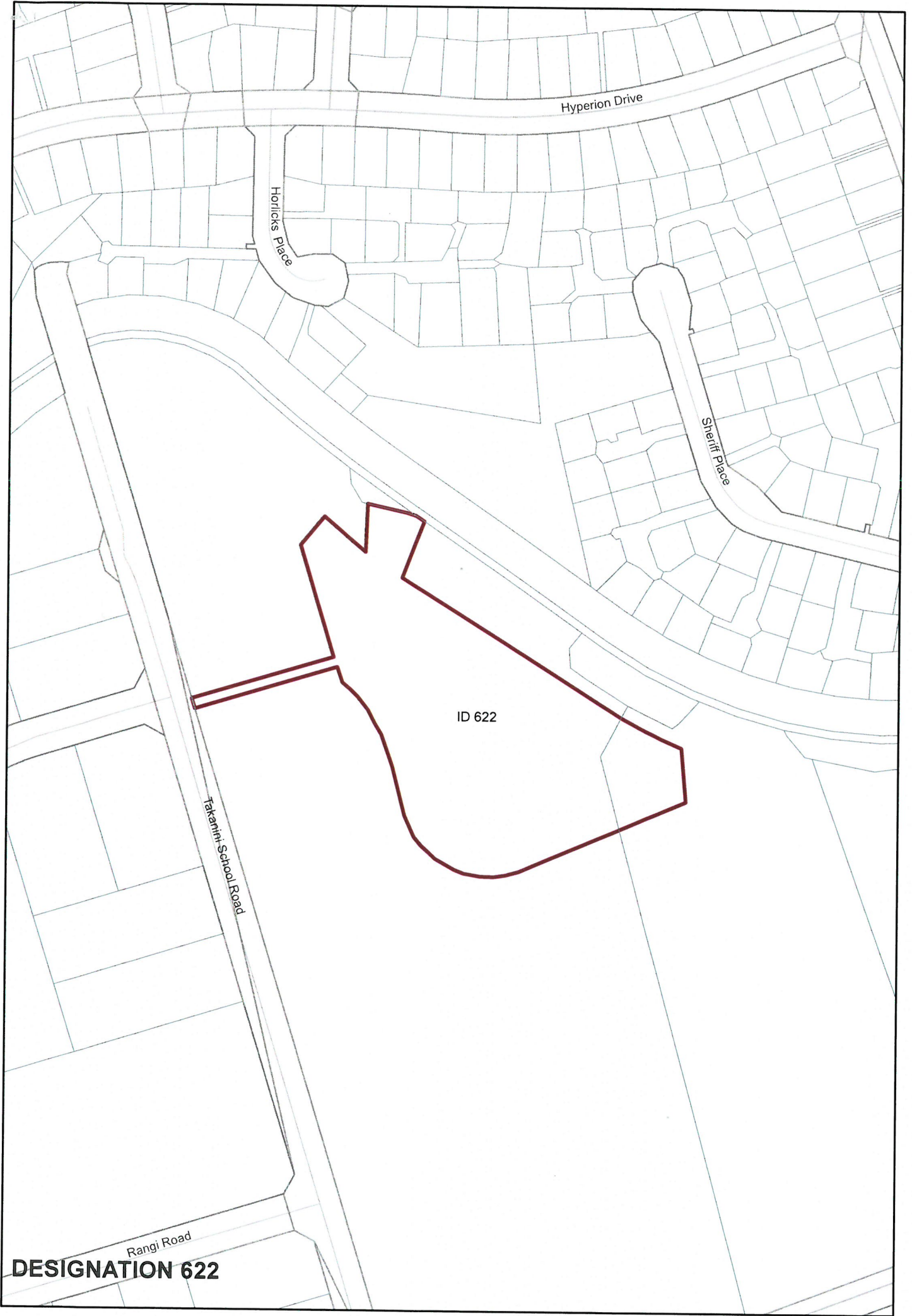
Map prepared by: Shelley Glassey - Geospatial Lead, Auckland-wide

Signature: *S. Glassey*

Approved by: Phill Reid, Auckland-wide Manager

Signature: *Phill Reid*

Date: 9-3-17



Hyperion Drive

Horlicks Place

Sherill Place

ID 622

Takarua School Road

Rangi Road

DESIGNATION 622

MEMORANDUM**FILE REF****TO** Phill Reid, Manager Planning – Auckland-wide**FROM** David Wong – Principal Planner, Central/South**DATE** 6 March 2016**SUBJECT** Amendment of designation in Auckland Unitary Plan Viewer
(Planning Maps) for Watercare designation 9466

This memorandum concerns an update to the Auckland Unitary Plan Operative in part for an amendment to designation 9466 (Central Interceptor) due to an error in the designation boundary.

Rule or Section of Plan	GIS Viewer
Subject Site (if applicable):	Mt Albert War Memorial
Legal Description (if applicable):	Pt Allot 38 Parish of Titirangi and Pt Allot 171 Sec 10 Subs of Auckland (defined on DP 6763); Pt Allot 38 Parish of Titirangi and Pt Allot 171 Sec 10 Subs of Auckland; Deposited Plan 7269; Lot 14 DP 7029; Pt Lot 15 DEEDS Plan 50 blue
Relevant Plan Text:	No changes to text
Nature of Amendment	Amendment of designation boundary due to error.
Changes required to be made	See attachments: <ul style="list-style-type: none">• Titled 'Central Interceptor Proposed Designation of Land' from Watercare showing the correct designation boundary• Titled 'Designation 9466' from Auckland Council GIS team showing the amended designation boundary• Email trail of identification of boundary error

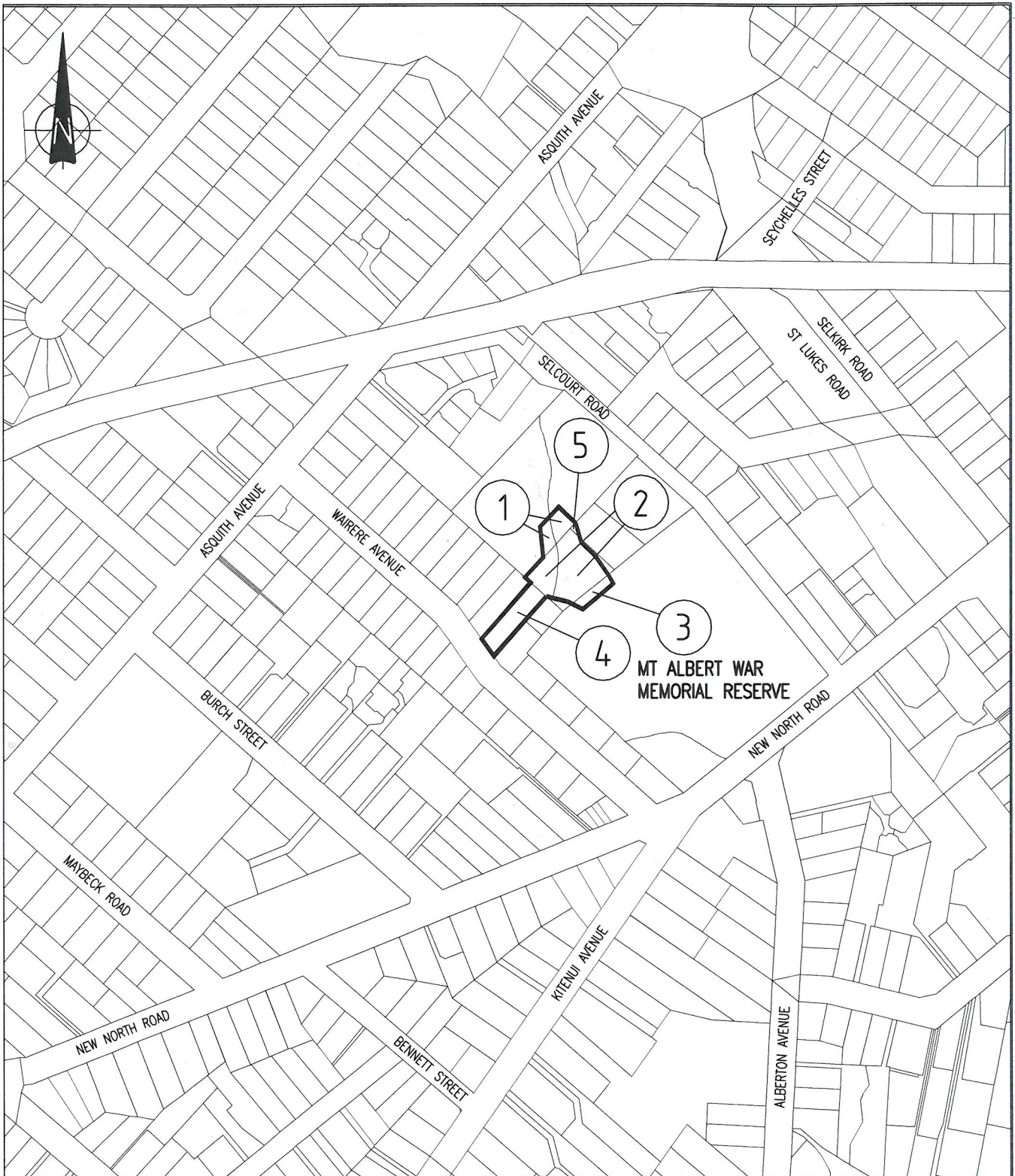
Prepared by: David Wong, Principal Planner – Central/South**Signature:****Map changes prepared by:** Shelley Glassey – Lead Geospatial Analyst, Auckland-wide**Signature:****Approved by:** Phill Reid, Manager Planning – Auckland-wide**Signature:****Date:**
9-3-17

Map below shows incorrect designation boundary



Map below shows correct designation boundary



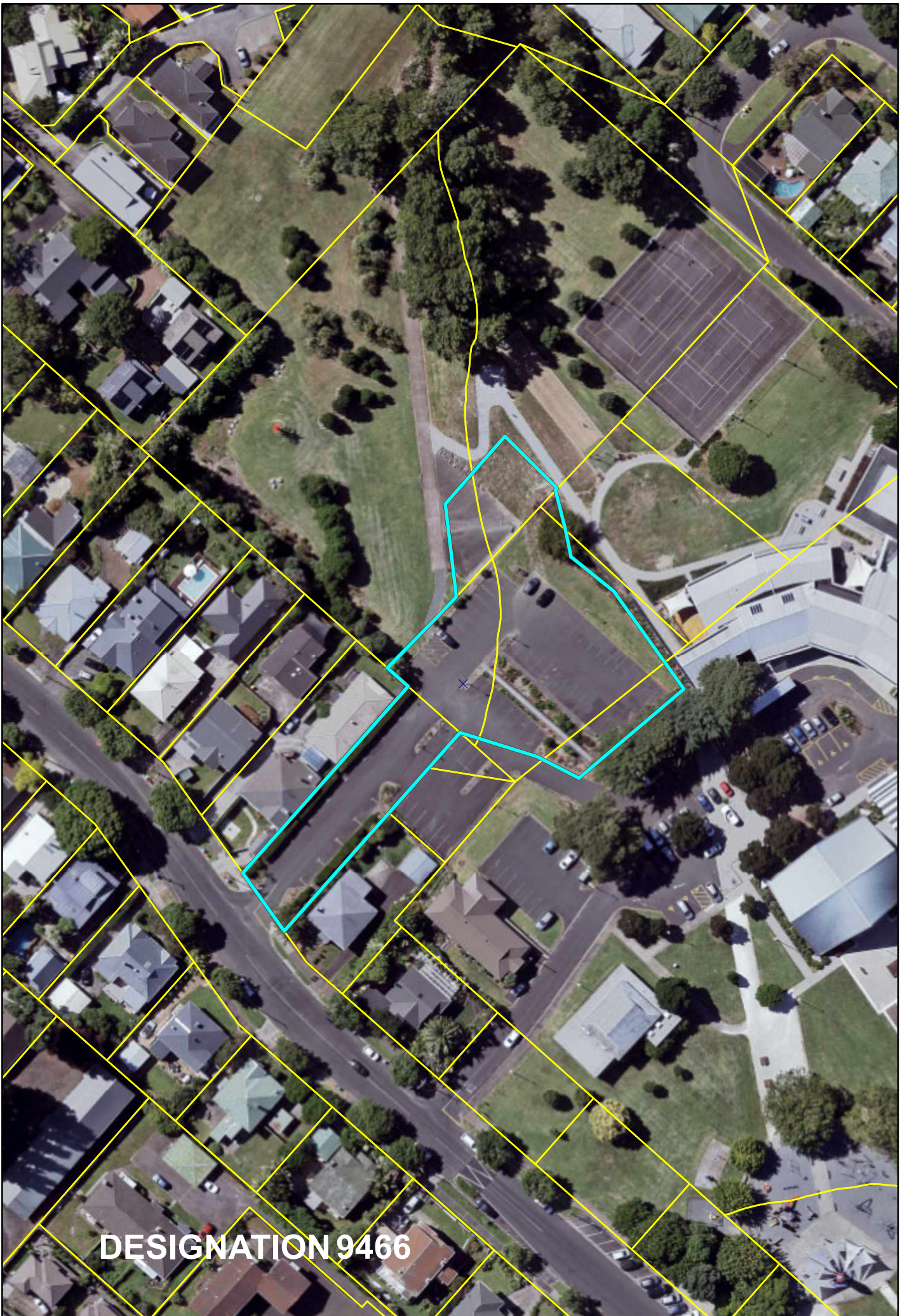


LEGEND

— PROPOSED DESIGNATION BOUNDARY

		CENTRAL INTERCEPTOR PROPOSED DESIGNATION OF LAND MT ALBERT WAR MEMORIAL RESERVE - CAR PARK			CAD FILE MAIN-NOR3-1		DATE 20-Feb-13		
					ORIGINAL SCALE A4	CONTRACT No.		0538	
						DRAWING No.		ISSUE	
A		20/02/13				MAIN-NOR3-1		A	
ISSUE		DATE		NOR MARCH 2013					

COPYRIGHT - This drawing, the design and concept, remain the exclusive property of Watercare Services Limited and may not be used without approval. Copyright reserved.



DESIGNATION 9466