



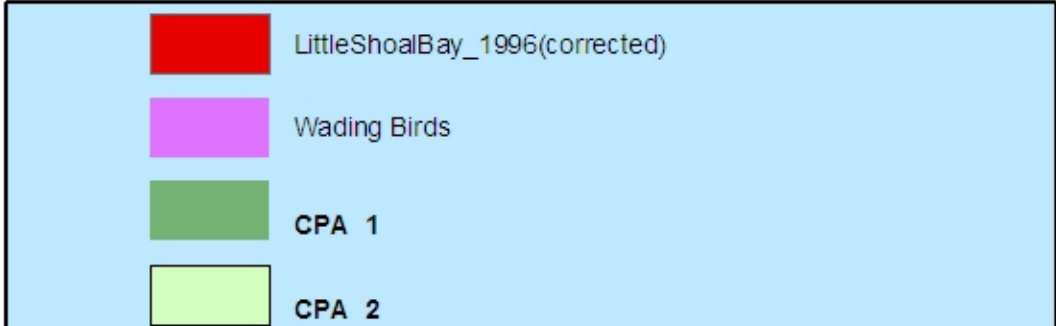
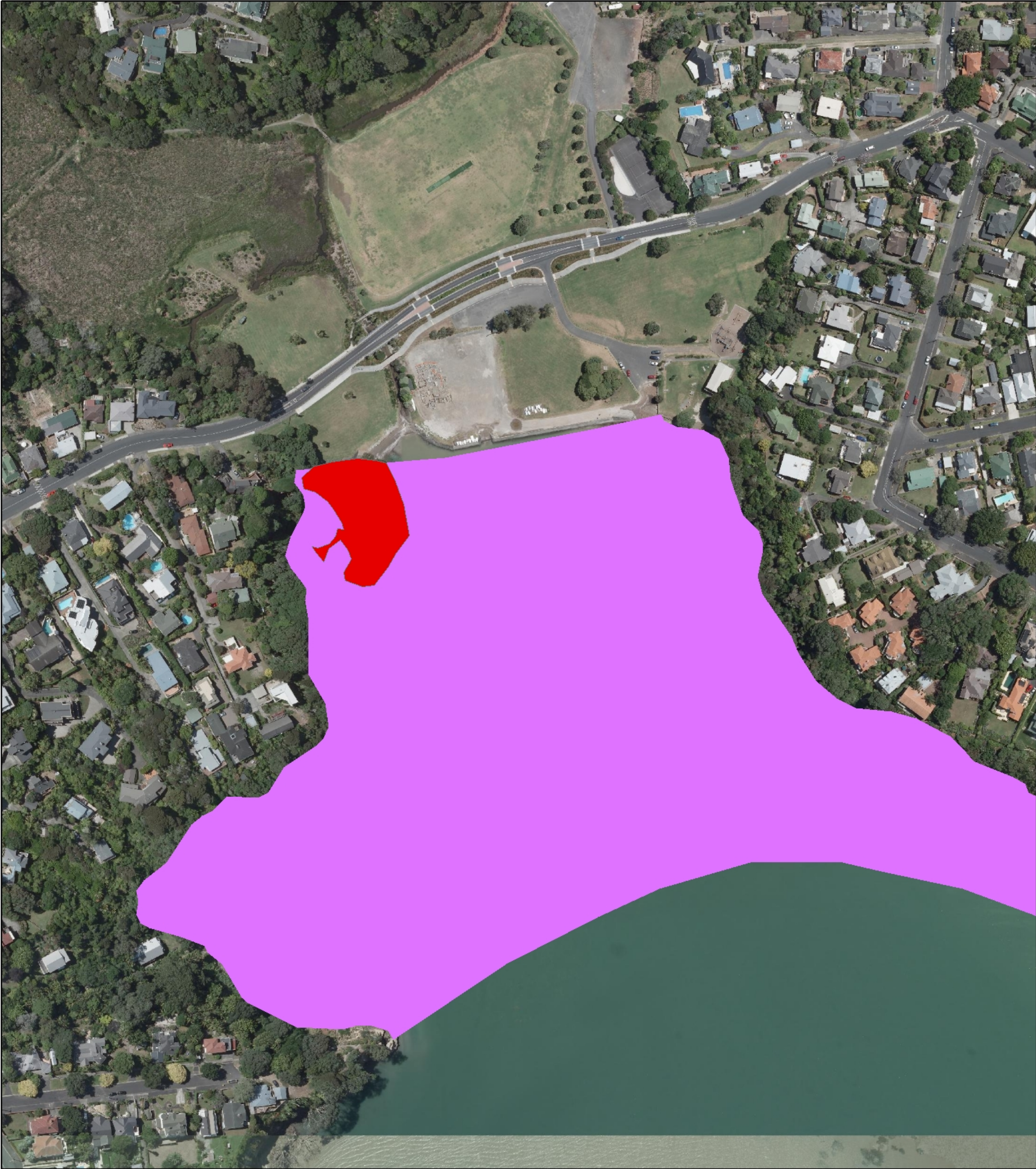
Charcoal Bay



NOTE: removal of only the area of visible mangroves NOT COVERED by a coloured layer would be permitted under the proposed rule.

Figure shows approximate extent of mangroves at 1996 against 2010-12 aerial background. Mangrove removal requires a consent in SEAM-1/2W (approximated by 'Wading Bird' layer), SEAM-1 (approximated here by CPA-1), & SEAM-2 [$\geq 200\text{m}$ for 'infrastructure', no lower limit for general removal] (approximated here by CPA-2).

Little Shoal Bay



NOTE: removal of only the area of visible mangroves NOT COVERED by a coloured layer would be permitted under the proposed rule.

Figure shows approximate extent of mangroves at 1996 against 2010-12 aerial background. Mangrove removal requires a consent in SEAM-1/2W (approximated by 'Wading Bird' layer), SEAM-1 (approximated here by CPA-1), & SEAM-2 [$\geq 200\text{m}$ for 'infrastructure', no lower limit for general removal] (approximated here by CPA-2).

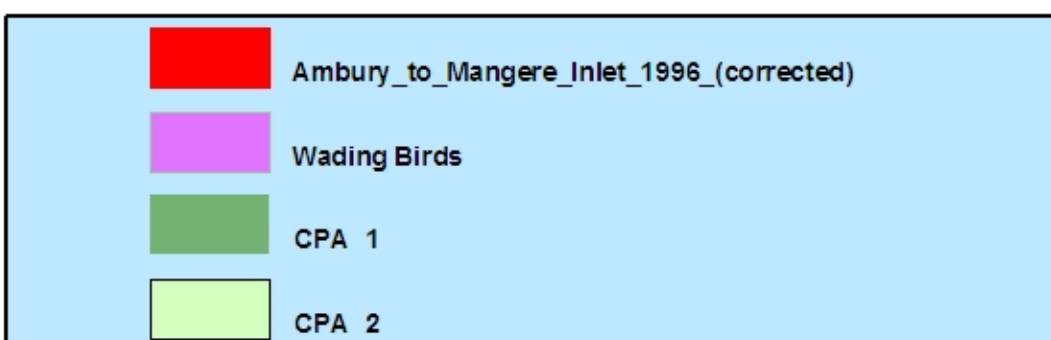
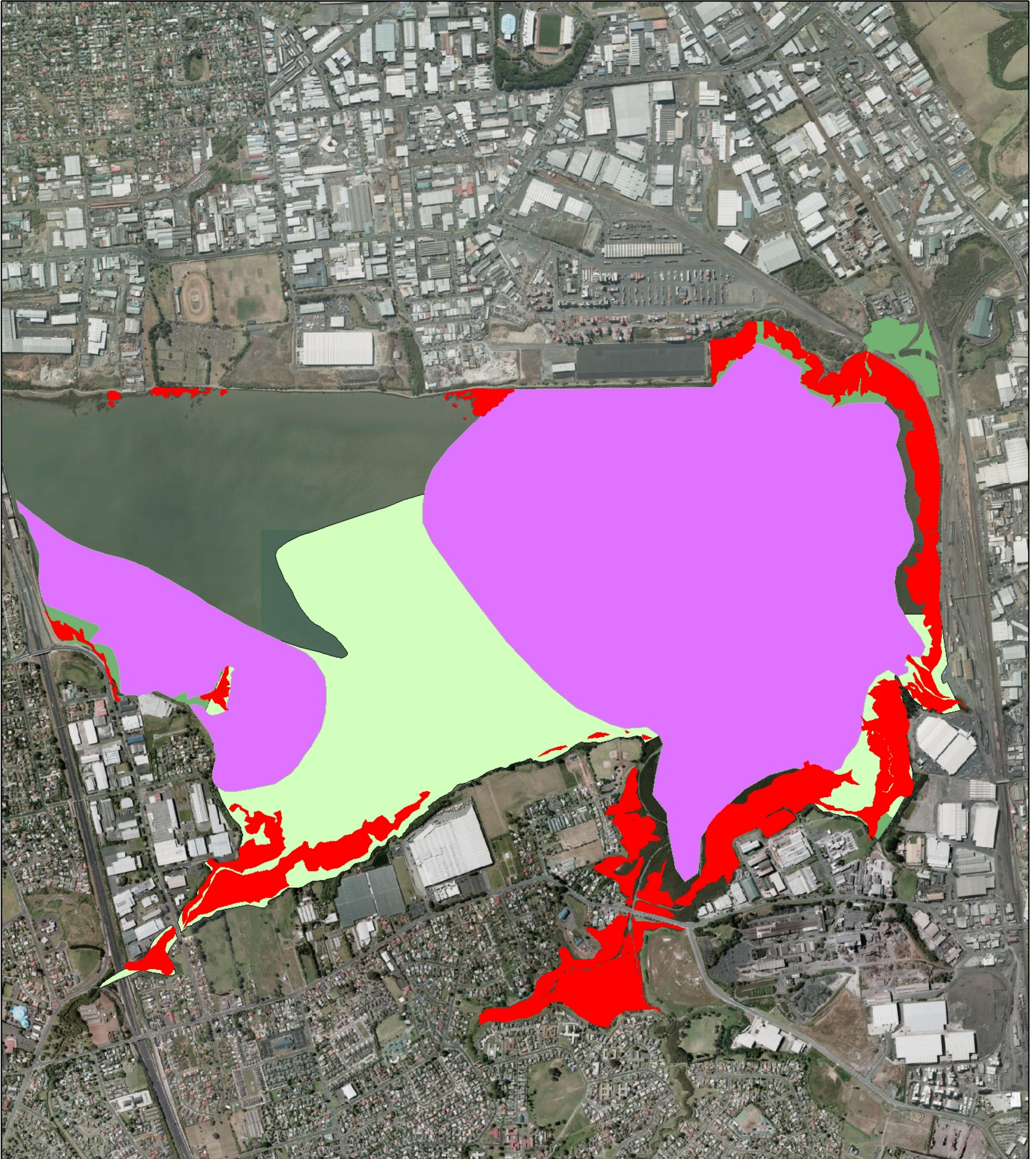




Onehunga

Mangere Bridge

Mangere Inlet East



NOTE: removal of only the area of visible mangroves NOT COVERED by a coloured layer would be permitted under the proposed rule.

Figure shows approximate extent of magroves at 1996 against 2010-12 aerial background. Mangrove removal requires a consent in SEAM-1/2W (approximated by 'Wading Bird' layer), SEAM-1 (approximated here by CPA-1), & SEAM-2 [$\geq 200\text{m}$ for 'infrastructure', no lower limit for general removal] (approximated here by CPA-2 .



Favona

Ngarango Otakui Island

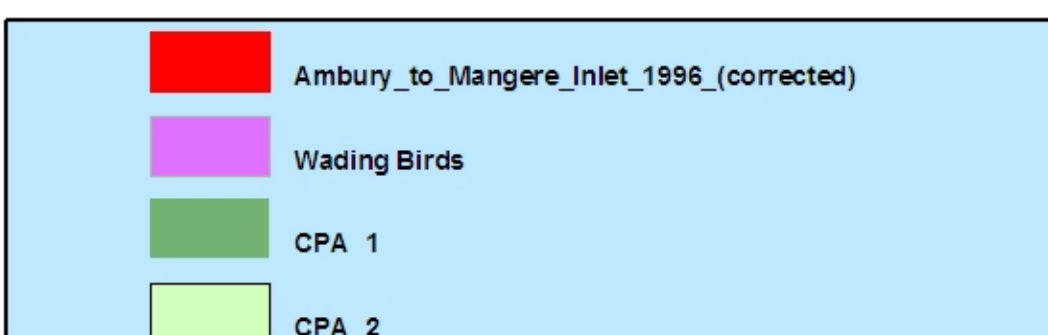
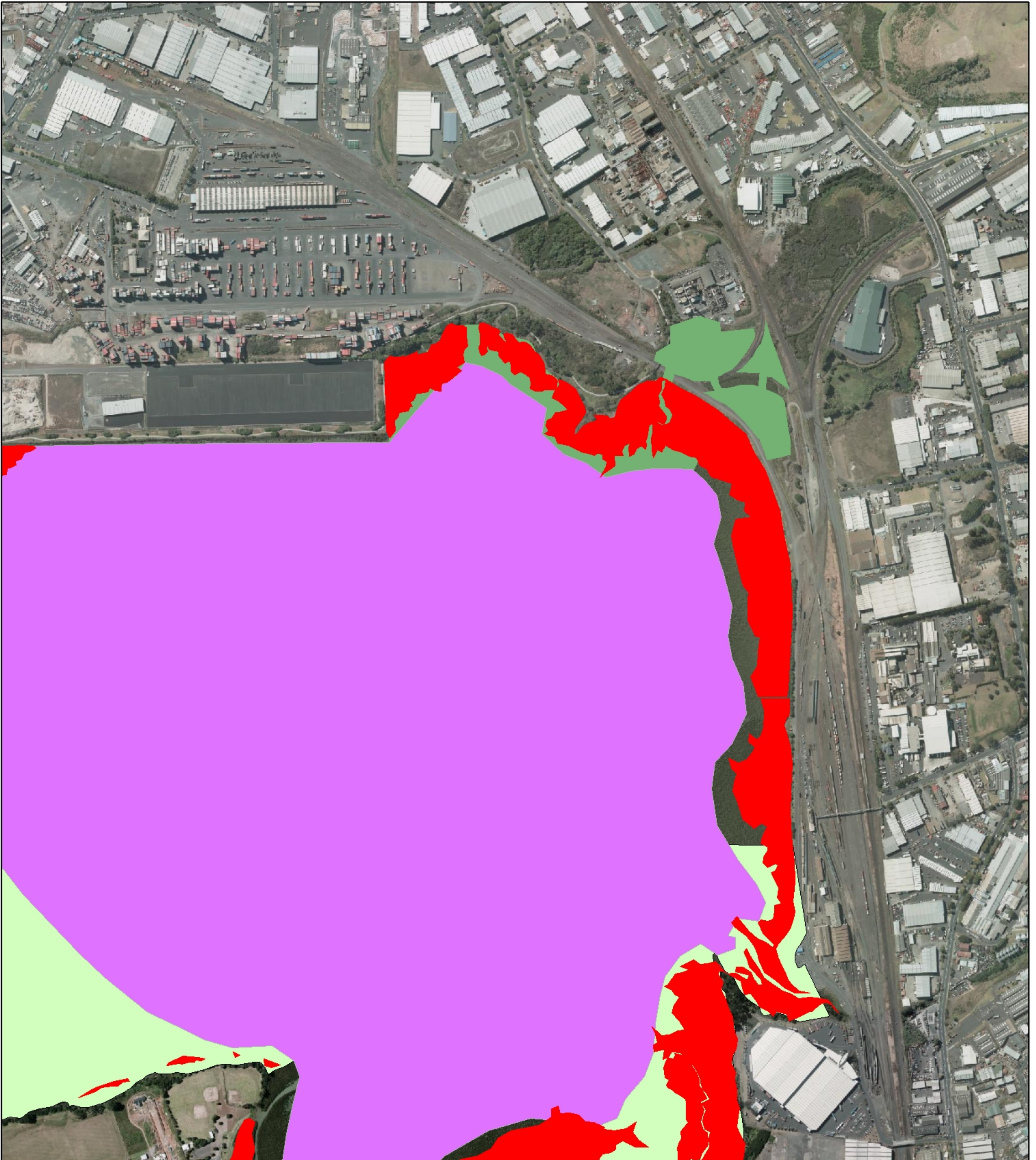
Westfield



Mangere Inlet

Favona

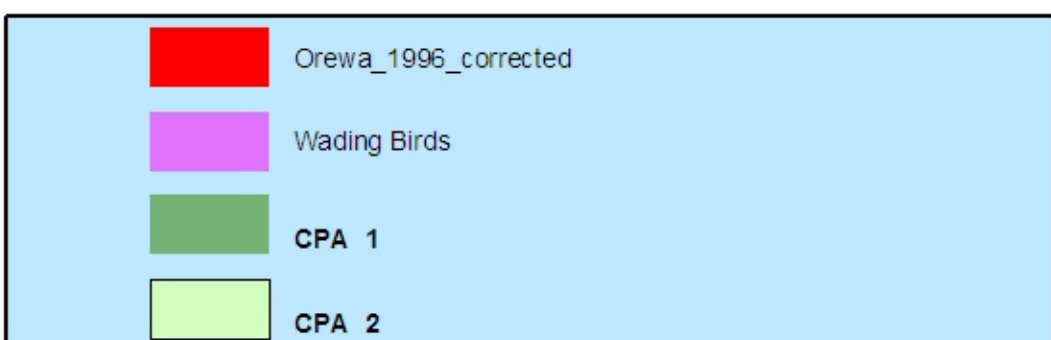
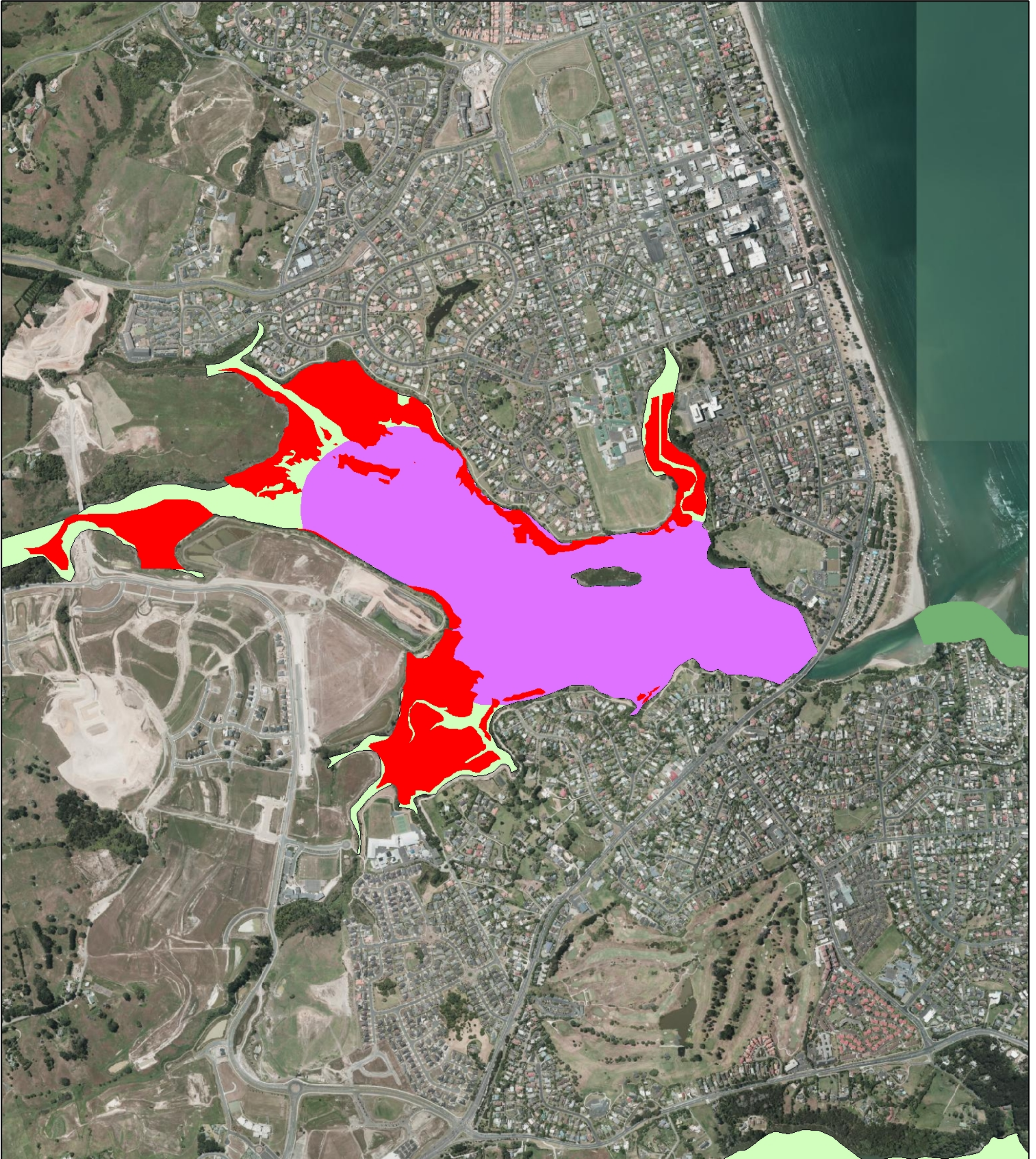
Mangere Inlet Railway & Ann's Creek area



NOTE: removal of only the area of visible mangroves NOT COVERED by a coloured layer would be permitted under the proposed rule.

Figure shows approximate extent of mangroves at 1996 against 2010-12 aerial background. Mangrove removal requires a consent in SEAM-1/2W (approximated by 'Wading Bird' layer), SEAM-1 (approximated here by CPA-1), & SEAM-2 [$\geq 200\text{m}$ for 'infrastructure', no lower limit for general removal] (approximated here by CPA-2).

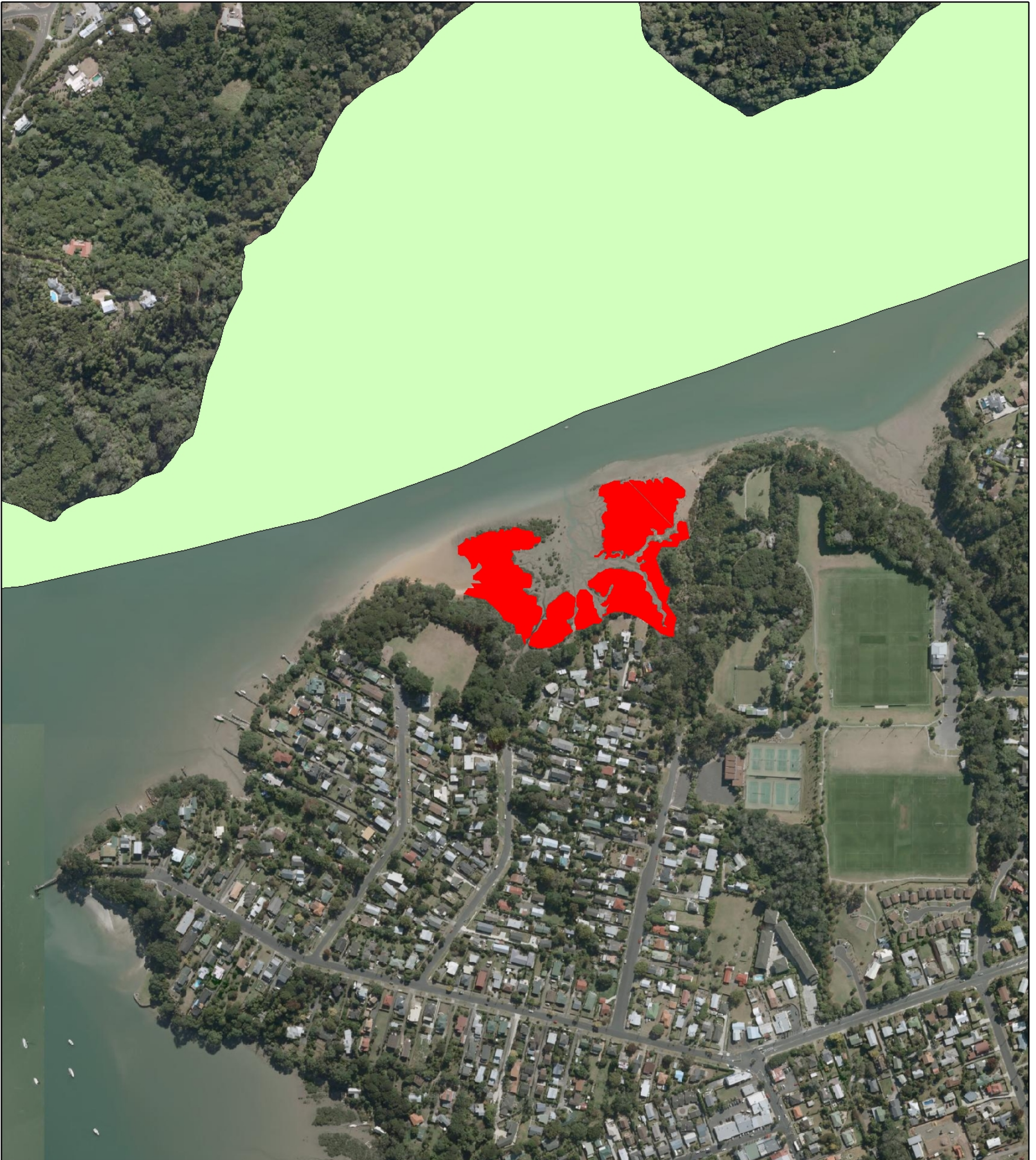
Orewa



NOTE: removal of only the area of visible mangroves NOT COVERED by a coloured layer would be permitted under the proposed rule.

Figure shows approximate extent of mangroves at 1996 against 2010-12 aerial background. Mangrove removal requires a consent in SEAM-1/2W (approximated by 'Wading Bird' layer), SEAM-1 (approximated here by CPA-1), & SEAM-2 [$\geq 200\text{m}$ for 'infrastructure', no lower limit for general removal] (approximated here by CPA-2).

Tui Park and environs



NOTE: removal of only the area of visible mangroves NOT COVERED by a coloured layer would be permitted under the proposed rule.

Figure shows approximate extent of mangroves at 1996 against 2010-12 aerial background. Mangrove removal requires a consent in SEAM-1/2W (approximated by 'Wading Bird' layer), SEAM-1 (approximated here by CPA-1), & SEAM-2 [$\geq 200\text{m}$ for 'infrastructure', no lower limit for general removal] (approximated here by CPA-2).

Tui Park



NOTE: removal of only the area of visible mangroves NOT COVERED by a coloured layer would be permitted under the proposed rule.

Figure shows approximate extent of mangroves at 1996 against 2010-12 aerial background. Mangrove removal requires a consent in SEAM-1/2W (approximated by 'Wading Bird' layer), SEAM-1 (approximated here by CPA-1), & SEAM-2 [$\geq 200\text{m}$ for 'infrastructure', no lower limit for general removal] (approximated here by CPA-2).