



**UNIT 42 (MAP 11)** - NC boundary amended to follow edge of coastal slope - excludes clusters of houses along Kauri Point Road. Houses well off the main ridge on the mid slopes are included within the NC Unit.

## KAURI POINT ROAD (PART 4)

BOUNDARY ADJUSTMENTS

NATURAL CHARACTER ASSESSMENT - AUCKLAND REGION | JANUARY 2014





## KAURI POINT ROAD (PART 5)

BOUNDARY ADJUSTMENTS

NATURAL CHARACTER ASSESSMENT - AUCKLAND REGION | JANUARY 2014





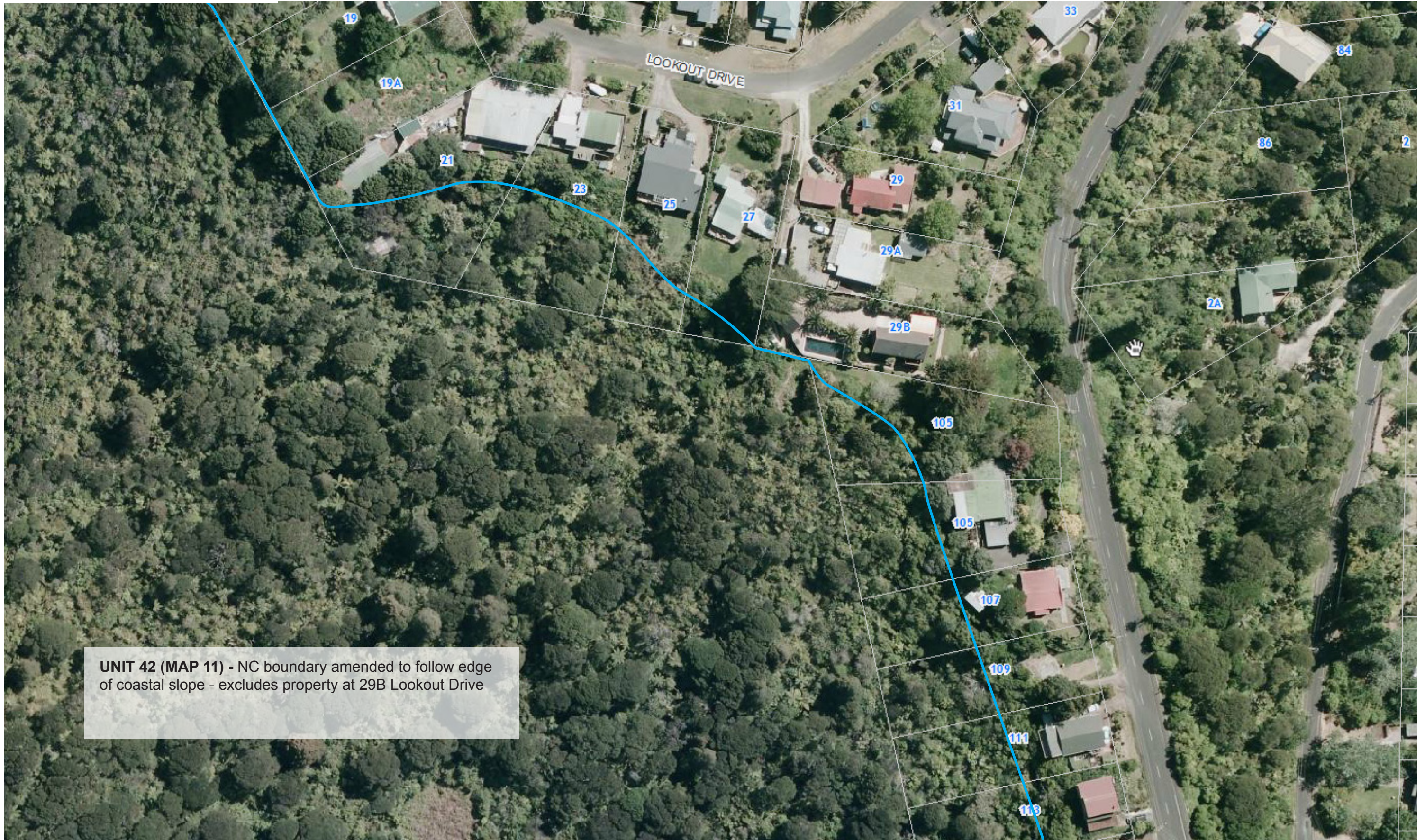
**UNIT 42 (MAP 11)** - NC boundary amended to follow edge of coastal slope - excludes clusters of houses along Kauri Point Road

## KAURI POINT ROAD (PART 6)

BOUNDARY ADJUSTMENTS

NATURAL CHARACTER ASSESSMENT - AUCKLAND REGION | JANUARY 2014





**UNIT 42 (MAP 11)** - NC boundary amended to follow edge of coastal slope - excludes property at 29B Lookout Drive

## 29B LOOK OUT DRIVE

BOUNDARY ADJUSTMENTS

NATURAL CHARACTER ASSESSMENT - AUCKLAND REGION | JANUARY 2014





# 1 LOOK OUT DRIVE

BOUNDARY ADJUSTMENTS

NATURAL CHARACTER ASSESSMENT - AUCKLAND REGION | JANUARY 2014





**UNIT 42 (MAP 11) - NC boundary amended to follow edge of coastal ridge - excludes houses at 18, 25, & 27 Karen Road**

## 18 KAREN ROAD

BOUNDARY ADJUSTMENTS



**UNIT 41 (MAP 11) - NC boundary amended to follow edge of coastal ridge - excludes building at 1074 Huia Road**



# 1074 HUIA ROAD

BOUNDARY ADJUSTMENTS