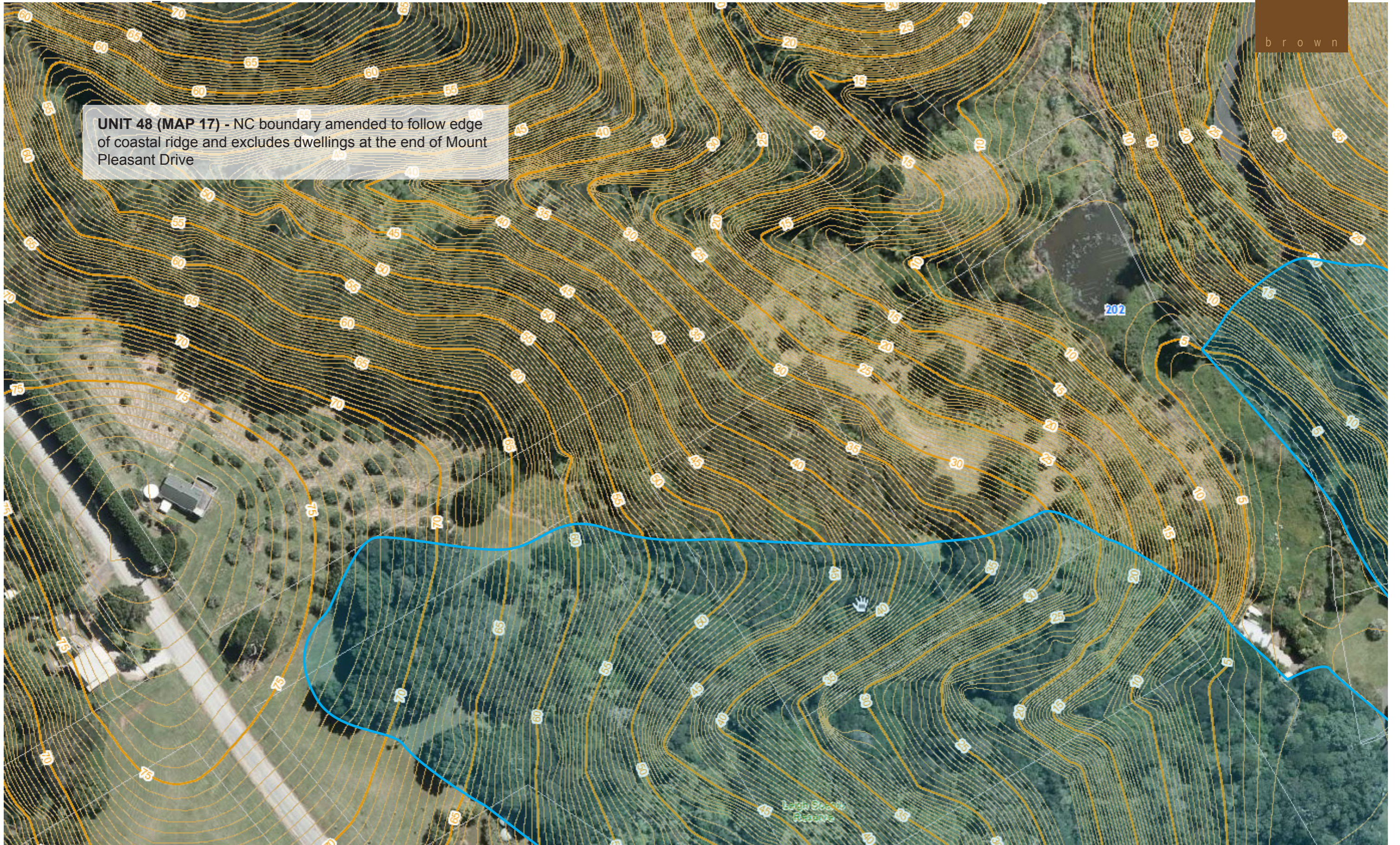


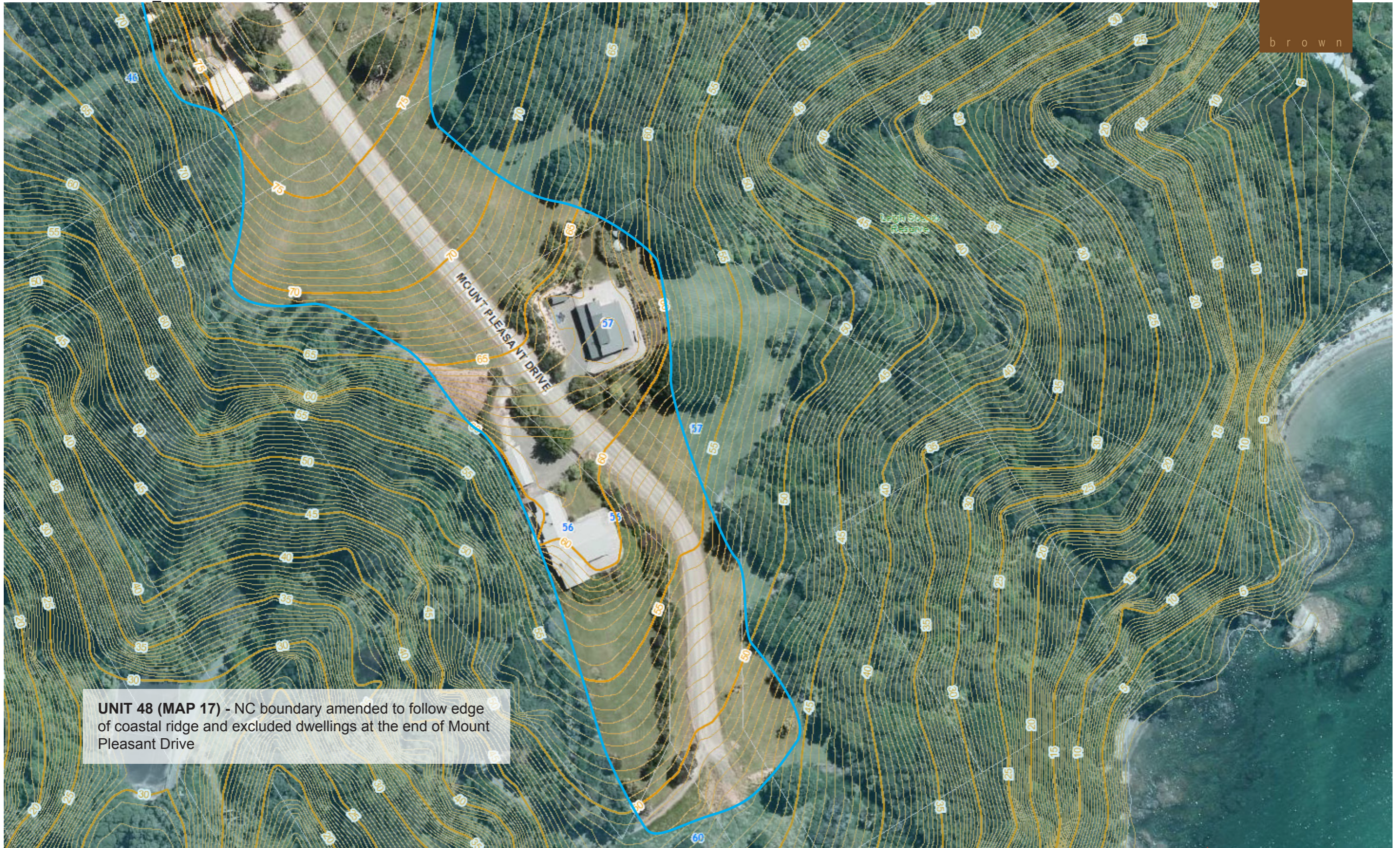
UNIT 48 (MAP 17) - NC boundary amended to follow edge of coastal ridge and excludes dwellings at the end of Mount Pleasant Drive



MOUNT PLEASANT DRIVE (PART 1)

BOUNDARY ADJUSTMENTS

NATURAL CHARACTER ASSESSMENT - AUCKLAND REGION | JANUARY 2014



UNIT 48 (MAP 17) - NC boundary amended to follow edge of coastal ridge and excluded dwellings at the end of Mount Pleasant Drive

MOUNT PLEASANT DRIVE (PART 2)

BOUNDARY ADJUSTMENTS

NATURAL CHARACTER ASSESSMENT - AUCKLAND REGION | JANUARY 2014



UNIT 48 (MAP 17) - NC boundary amended to exclude pine forestry and dwellings at the edge of the bushline.

MOUNT PLEASANT DRIVE (PART 3)

BOUNDARY ADJUSTMENTS

NATURAL CHARACTER ASSESSMENT - AUCKLAND REGION | JANUARY 2014



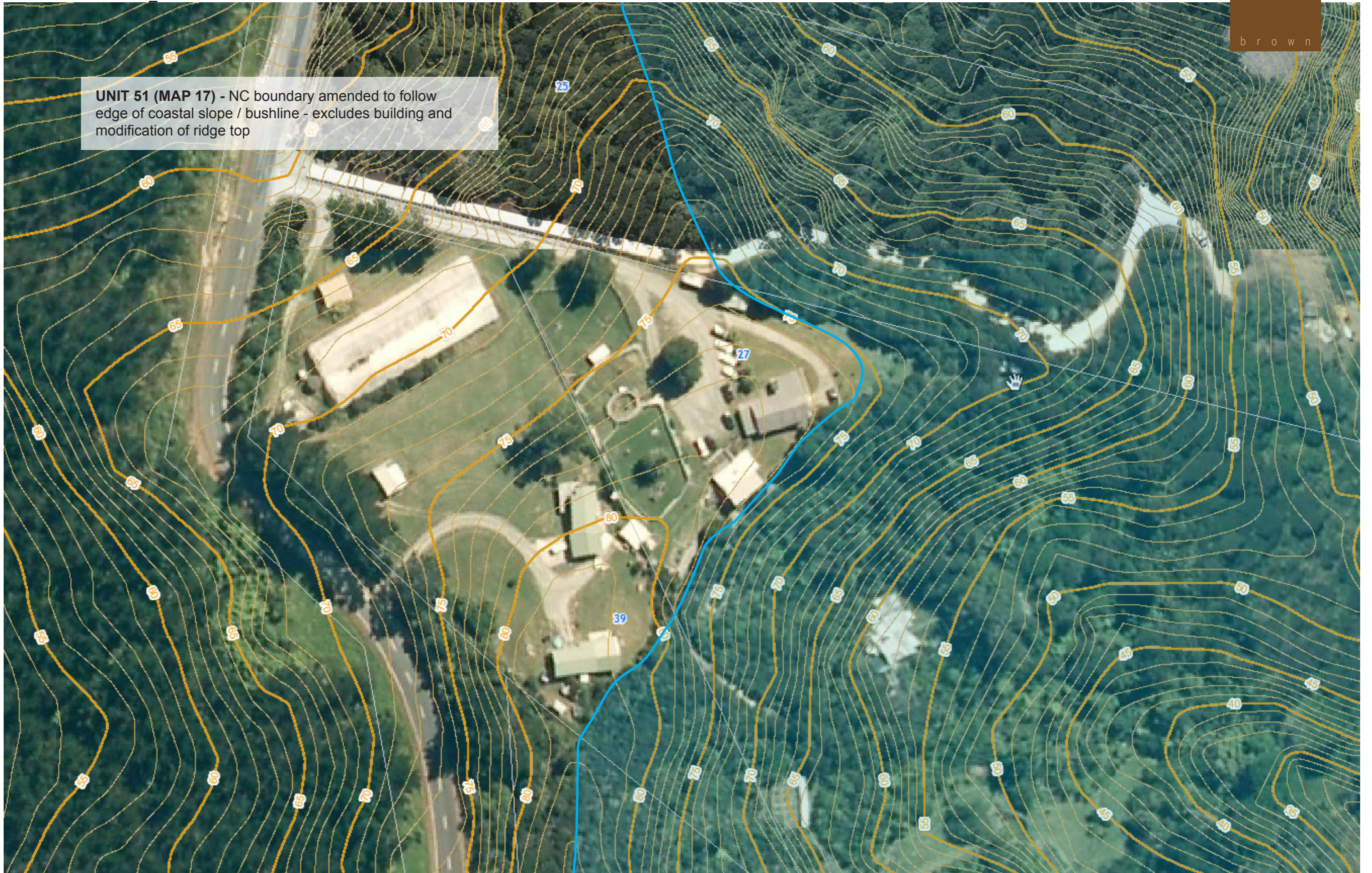
UNIT 48 (MAP 17) - NC boundary amended to exclude pine forestry and dwellings at the edge of the bushline.

MOUNT PLEASANT DRIVE (PART 4)

BOUNDARY ADJUSTMENTS

NATURAL CHARACTER ASSESSMENT - AUCKLAND REGION | JANUARY 2014

UNIT 51 (MAP 17) - NC boundary amended to follow edge of coastal slope / bushline - excludes building and modification of ridge top



27 TI POINT ROAD (PART 1)

BOUNDARY ADJUSTMENTS

NATURAL CHARACTER ASSESSMENT - AUCKLAND REGION | JANUARY 2014

UNIT 51 (MAP 17) - NC boundary amended to follow edge of coastal slope / bushline - excludes building and modification of ridge top



27 TI POINT ROAD (PART 2)

BOUNDARY ADJUSTMENTS

NATURAL CHARACTER ASSESSMENT - AUCKLAND REGION | JANUARY 2014



UNIT 51 (MAP 17) - NC boundary amended to follow edge of coastal ridge - excludes dwelling at 113 and 117 Ti Point Road.

113 TI POINT ROAD

BOUNDARY ADJUSTMENTS



UNIT 51 (MAP 17) - NC boundary amended to follow edge of coastal ridge - excludes dwellings and modification of ridge top

21 TATHAM ROAD

BOUNDARY ADJUSTMENTS

NATURAL CHARACTER ASSESSMENT - AUCKLAND REGION | JANUARY 2014



UNIT 51 (MAP 17) - NC boundary amended to follow edge of coastal ridge/bushline - dwelling along the ridgetop are excluded

TiPoint
Scenic Reserve

26 TATHAM ROAD BOUNDARY ADJUSTMENTS