

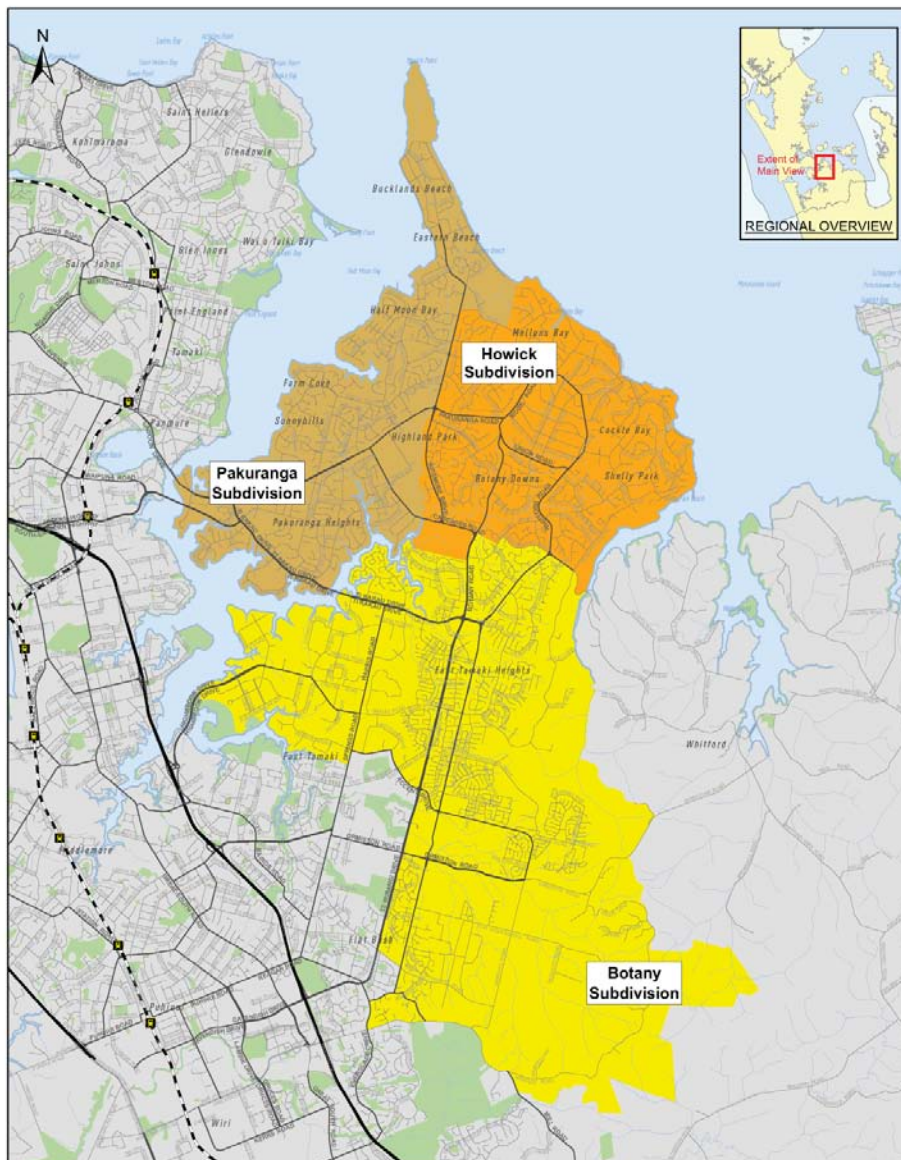
## **Howick Local Board Profile**

### **- Initial results from the 2013 Census**

February 2014

Social and Economic Research Team  
Research, Investigations and Monitoring Unit  
Auckland Council

## Map of Howick local board area



This report is part of a broader series of 2013 Census reports being developed by the Research, Investigations and Monitoring Unit at Auckland Council. These will be released throughout 2014.

For more information on Auckland-related census data please contact us on [census@aucklandcouncil.govt.nz](mailto:census@aucklandcouncil.govt.nz).

For more information on the 2013 census, please visit the Statistics New Zealand census website:  
[www.stats.govt.nz/Census/2013-census.aspx](http://www.stats.govt.nz/Census/2013-census.aspx)

To access Auckland-specific data visit our interactive website  
[www.censusauckland.co.nz](http://www.censusauckland.co.nz).

## At a glance

At the 2013 New Zealand Census of Population and Dwellings:

- The usually resident population count for the Howick local board area was 127,125. Howick's population increased by 13,620 (12.0%) between the 2006 and 2013 Censuses.
- 55.0 per cent of Howick's usually resident population identified as European, compared with 59.3 per cent across Auckland as a whole.
- 47,511 (38.8%) usual residents in Howick identified with an Asian ethnic identity, up from 35,178 (31.8%) in 2006. Chinese was the largest sub-group constituting 21.0 per cent of the total population in Howick.
- The proportions of residents who identified as Māori and Pacific Peoples were lower in Howick than they were in Auckland as a whole
- Nearly one in five (19.9%) Howick usual residents spoke a Sinitic (Chinese) language.
- The median age of residents of Howick was 37.8 years, compared to 35.1 years for Auckland as a whole.
- There were 61,881 employed adults (people aged 15 years and over) in Howick. The proportion of adult residents who were employed in Howick was 62.7 per cent, compared with 61.5 per cent in Auckland as a whole.
- The median personal income for adults in Howick was \$30,300 per annum – higher than that for Auckland as a whole at \$29,600.
- The proportion of Howick adults with a formal qualification was 86.1 per cent, up from 84.3 per cent in 2006.
- At the 2013 Census, a total of 40,932 households and 41,043 occupied private dwellings were recorded in Howick.
- One-family households were the most common type of household, making up 76.2 per cent of households. Multi-family households increased as a proportion of households from 5.1 per cent in 2006 to 7.1 per cent in 2013.
- The median household income was \$84,500 per annum, compared to \$76,500 in Auckland as a whole.
- 80.9 per cent of the occupied dwellings in Howick were separate houses, compared to 74.5 per cent in Auckland as a whole.
- Home ownership was slightly higher in Howick at 70.7 per cent compared to 61.5 per cent for Auckland. In line with long-term trends, the home ownership rate in Howick declined from 73.7 per cent in 2006.

# Table of Contents

1.0	Introduction .....	1
1.1	Howick local board area .....	1
1.2	Important notes on the data.....	1
2.0	Population and growth .....	2
2.1	Auckland's growth slows but remains high.....	2
2.2	Howick local board population has increased .....	2
3.0	Cultural diversity .....	3
3.1	Relatively large Asian population in Howick.....	3
3.2	Broad changes since 2006 .....	4
3.3	One fifth of the population are Chinese .....	5
3.4	Slight increase in numbers of Māori .....	6
3.5	Small increase in numbers of Pacific peoples .....	6
3.6	MELAA category small but growing.....	7
3.7	Large numbers of Sinitic language speakers .....	8
4.0	Age.....	9
4.1	High proportions of those aged over 40 in Howick.....	9
4.2	Howick's older population is growing.....	9
5.0	Work and income.....	11
5.1	High proportions of Howick residents employed .....	11
5.2	Rise in employment for people aged 65 years and over .....	12
5.3	Slight increase in unemployment for young people.....	12
5.4	Median incomes relatively high .....	12
6.0	Formal education qualifications .....	13
6.1	Overseas secondary school qualifications more prevalent .....	13
6.2	Increase in levels of qualifications in Howick.....	13
7.0	Households and dwellings .....	14
7.1	One-family households prevalent in Howick.....	14
7.2	Increase in multi-family households .....	15
7.3	Separate houses prevalent in Howick .....	15
7.4	Unoccupied dwellings less prevalent in Howick .....	15
8.0	Home ownership.....	16
8.1	Home ownership relatively high in Howick .....	16
	Summary Data.....	17

# 1.0 Introduction

This report provides a summary profile for the Howick local board area, following the initial release of data from the 2013 New Zealand Census of Population and Dwellings. It presents an overview of key findings as at the 2013 Census, and outlines changes over time since the 2006 Census. A table of key census data is included at the back of this report, for quick reference.

## 1.1 Howick local board area

The Howick local board area (hereafter referred to as Howick) includes the established suburbs of Pakuranga and Howick and the new growth areas of Botany and Flat Bush. It also includes the industrial estate in East Tamaki.

Pakuranga is located on the eastern side of the Panmure Inlet and boasts many community facilities such as Lloyd Elsmore Park and the Te Tuhi Centre for the Arts.

Botany is a growing community and includes the Flat Bush development. Its major attractions are Botany Town Centre, Ormiston Road Bridge and Barry Curtis Park.

East Tamaki's business area is rejuvenating in part due to development at the 107 hectare Highbrook Business Park.

Howick and Pakuranga are well-established communities that provide significant local community facilities. Botany/Flat Bush is a relatively new area undergoing rapid and substantial growth.

## 1.2 Important notes on the data

Information in this report is based on the census usually resident population count from New Zealand's 2013 Census of Population and Dwellings, held on 5 March 2013. This excludes New Zealand residents who were temporarily overseas on census night.

The data in this report has been randomly rounded to protect confidentiality. Individual figures may not add up to totals, and values for the same data may vary in different tables.

Unless otherwise stated, all percentages in this report exclude responses that cannot be classified (e.g., 'not stated', 'response unidentifiable', 'response out of scope'). This is in line with Statistics New Zealand conventions.

It should be remembered when considering the findings in this report that as the 2011 Census was cancelled, the gap between this census and the last one was seven years, rather than five years so caution should be exercised when comparing inter-censal change.

## 2.0 Population and growth

Auckland has a long history of population growth, fuelled by natural increase (births minus deaths), as well as net migration from overseas and other parts of the country. Findings from the 2013 Census show that growth continued to occur across all local board areas in Auckland, although it is slightly muted when compared with the previous inter-censal period. This section outlines population growth in Auckland prior to discussing Howick in particular.

### 2.1 Auckland's growth slows but remains high

The 2013 usually resident population count for Auckland was 1,415,500, constituting 34.0 per cent of New Zealand's total population.

This was an increase of 110,589 people in the seven years since the previous census. Auckland gained the largest number of residents of any local government area in New Zealand and just over half (51.7%) of New Zealand's population growth occurred in Auckland.

Auckland experienced a higher percentage change in population between 2006 and 2013 than did New Zealand overall – 8.5 per cent compared with 5.3 per cent. However, Auckland's percentage change was not as high as some other local government areas across New Zealand, including Selwyn District (32.6%) and Queenstown Lakes District (22.9%).

The average annual growth for Auckland was 1.2 per cent, half of that from the previous inter-censal period (2.4%). This slow-down in the rate of population growth between 2006 and 2013 is likely to be a result of several factors, including a decline in net migration, as the impact of the Global Financial Crisis took effect.

### 2.2 Howick local board population has increased

The 2013 usually resident population count for Howick was 127,125, constituting 9.0 per cent of Auckland's total population.

The usual resident population of Howick had increased by 13,620 (12.0%) since the 2006 Census. The general Auckland-wide slow-down in the rate of population growth between 2006 and 2013 when compared to the previous inter-censal period (mentioned above) also occurred in Howick, as shown in the table below.

**Table 1: Usually resident population, 2001 to 2013**

	Numbers of usual residents			Percentage change (%)		Annual average change (%)	
	2001	2006	2013	2001 to 2006	2006 to 2013	2001 to 2006	2006 to 2013
Howick	93,096	113,505	127,125	21.9	12.0	4.0	1.6
Auckland	1,160,271	1,304,958	1,415,550	12.5	8.5	2.4	1.2

## 3.0 Cultural diversity

This section outlines the ethnic composition of Howick's usually resident population at 2013, and also briefly discusses main languages spoken.

Statistics New Zealand identifies ethnicity as a measure of cultural affiliation, as opposed to race, ancestry, nationality or citizenship. In line with previous censuses, people could identify with more than one ethnicity. All responses are included in the data so tables showing proportions may add up to more than 100 per cent.

### 3.1 Relatively large Asian population in Howick

At the 2013 Census, 55.0 per cent of Howick's usually resident population identified as European, compared with 59.3 per cent across Auckland as a whole.

Over a third (38.8%) identified with an Asian ethnicity – a higher proportion than found in Auckland as a whole (23.1%). The only local board area with a higher proportion of residents identifying with Asian ethnicities was Puketāpapa (44.2%).

The proportions of residents who identified as Māori and Pacific Peoples were lower in Howick than they were in Auckland as a whole.

**Table 2: Ethnicity, 2013**

	Howick		Auckland	
	Count	%	Count	%
European	67,446	55.0	789,306	59.3
Māori	6,324	5.2	142,767	10.7
Pacific Peoples	5,631	4.6	194,958	14.6
Asian	47,511	38.8	307,233	23.1
MELAA	2,673	2.2	24,945	1.9
Other	1,314	1.1	15,639	1.2
Total people specifying ethnicity	122,604	106.8	1,331,427	110.8
Not elsewhere included	4,518	-	84,123	-
Total people	127,125	-	1,415,550	-

Notes:

MELAA refers to Middle Eastern, Latin American and African.

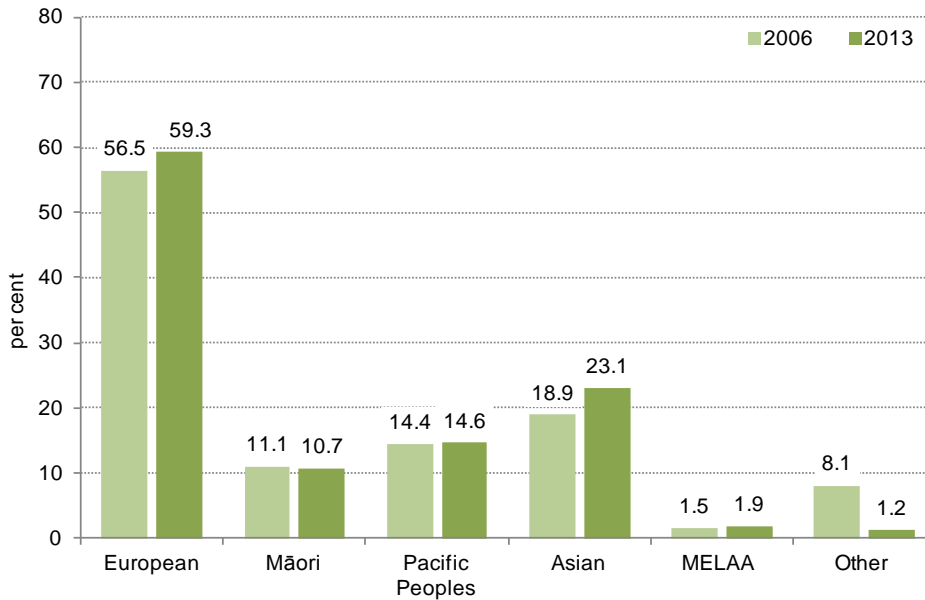
People could choose more than one ethnicity and categories are not exclusive. Percentages will add to more than 100.

Percentages exclude 'not elsewhere included'.

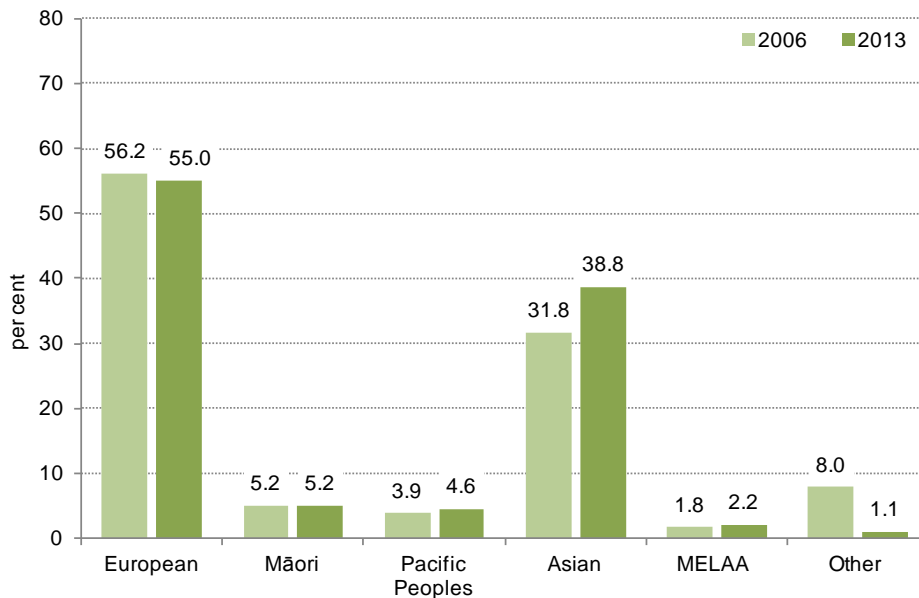
### 3.2 Broad changes since 2006

The graphs below show the changes in the ethnic composition of Auckland and Howick between the 2006 and 2013 Censuses. Although these two areas remain predominantly European, they both have a growing proportion of usual residents classified in the broad Asian ethnic category. There has also been a notable decrease in proportions classified as Other – some reasons for this are discussed below.

**Figure 1: Auckland ethnic groups, 2006 and 2013 (%)**



**Figure 2: Howick ethnic groups, 2006 and 2013**



**Notes:**

MELAA refers to Middle Eastern, Latin American and African.

People could choose more than one ethnicity and categories are not exclusive. Percentages will add to more than 100.



The decrease in the proportion of usual residents in the Other category between 2006 and 2013 was a national trend and is due in large part to a substantial drop in the numbers who identified as New Zealander – down from a high of 99,474 in 2006 to 14,904 in 2013 in Auckland as a whole and from 8,706 to 1,224 in Howick. A high number of New Zealander responses were recorded in the 2006 Census following an email campaign and public discussion in the lead-up to the census.

This general decline in New Zealander responses may also account for the increase in numbers of usual residents in the broad European ethnic category between 2006 and 2013, found right across New Zealand. In Howick, although the proportion of residents identifying as European declined, numbers of residents in this ethnic category increased. Looking at the European category in more detail (Table 3), it is clear that most of the growth in the European category occurred in the New Zealand European ethnic group, a group likely to have identified as New Zealanders in the 2006 census.<sup>1</sup>

**Table 3: Changes in five largest European groups, 2006 to 2013**

	Howick			Auckland		
	2006	2013	Change 2006 to 2013 (%)	2006	2013	Change 2006 to 2013 (%)
New Zealand European	51,576	56,649	9.8	611,901	696,966	13.9
British and Irish	3,222	3,003	-6.8	35,067	35,379	0.9
Dutch	660	639	-3.2	7,785	7,995	2.7
Australian	696	477	-31.5	8,637	7,062	-18.2
German	195	264	35.4	4,227	4,785	13.2
Total people specifying ethnicity	110,685	122,604	10.8	1,239,051	1,331,427	7.5

Notes:

This table shows the five largest European groups within the Howick local board area at Level 3 classification as at 2013. People could choose more than one ethnicity and groups are not exclusive. Percentages will add to more than 100.

### 3.3 One fifth of the population are Chinese

In 2013, 47,511 (38.8%) usual residents in Howick identified with an Asian ethnic identity, up from 35,178 (31.8%) in 2006.

The five largest Asian ethnic groups in Howick are shown in Table 4 above. Chinese remains the largest sub-group and now constitutes 21.0 per cent of the total population in Howick. Nearly a tenth (9.9%) of Howick's population identified as Indian in 2013.

As the table shows, the Filipino group experienced significant growth between 2006 and 2013 in Howick, increasing by 148.1 per cent to 2,784 usual residents. There was also significant growth in the Indian and Sri Lankan populations. Numbers of usual residents identifying as Korean decreased.

<sup>1</sup> For more information, refer to a report prepared in 2007 by Statistics New Zealand on who identified as 'New Zealander' <http://www.stats.govt.nz/Census/about-2006-census/profile-of-nzer-responses-ethnicity-question-2006-census.aspx>

**Table 4: Changes in five largest Asian groups, 2006 to 2013**

	Howick			Auckland		
	2006	2013	Change 2006 to 2013 (%)	2006	2013	Change 2006 to 2013 (%)
Chinese	20,034	25,767	28.6	98,418	118,230	20.1
Indian	8,040	12,156	51.2	74,460	106,329	42.8
Filipino	1,122	2,784	148.1	9,825	20,499	108.6
Korean	3,321	2,553	-23.1	21,351	21,981	3.0
Sri Lankan	723	963	33.2	5,049	6,906	36.8
Total people specifying ethnicity	110,685	122,604	10.8	1,239,051	1,331,427	7.5

Notes:

This table shows the five largest Asian groups within the Howick local board area at Level 3 classification as at 2013. People could choose more than one ethnicity and groups are not exclusive. Percentages will add to more than 100.

### 3.4 Slight increase in numbers of Māori

The number of usual residents identifying as Māori in Howick increased from 5,739 in 2006 to 6,324 in 2013, but their proportion of the population remained constant at 5.2 per cent.

### 3.5 Small increase in numbers of Pacific peoples

There was an increase in the number of Pacific peoples in Howick from 4,299 usual residents (3.9% of the population) in 2006 to 5,631 (4.6%) in 2013 (as shown in Figure 2).

Table 5 presents data for the five largest Pacific sub-groups in Howick. Those who identified as Samoan remain the largest Pacific sub-group, constituting 2.4 per cent of Howick's population in 2013. Of the five largest Pacific groups, the Fijian, Tongan and Samoan groups experienced relatively large growth.

**Table 5: Changes in five largest Pacific groups, 2006 to 2013**

	Howick			Auckland		
	2006	2013	Change 2006 to 2013 (%)	2006	2013	Change 2006 to 2013 (%)
Samoan	2,244	2,970	32.4	87,840	95,916	9.2
Cook Islands Maori	990	1,143	15.5	34,788	36,810	5.8
Tongan	657	966	47.0	40,140	46,971	17.0
Niuean	378	477	26.2	17,667	18,555	5.0
Fijian	246	414	68.3	5,847	8,493	45.3
Total people specifying ethnicity	110,685	122,604	10.8	1,239,051	1,331,427	7.5

Notes:

This table shows the five largest Pacific groups within the Howick local board area at Level 3 classification as at 2013. People could choose more than one ethnicity and groups are not exclusive. Percentages will add to more than 100.

### 3.6 MELAA category small but growing

The number of residents identifying with MELAA ethnicities in Howick increased from 2,007 (1.8%) in 2006 to 2,673 (2.2%) in 2013. The table below shows that Middle Eastern is the largest ethnic group within the broad MELAA category. Latin American and African ethnic groups have experienced the most growth.

**Table 6: Changes in MELAA groups, 2006 to 2013**

	Howick			Auckland		
	2006	2013	Change 2006 to 2013 (%)	2006	2013	Change 2006 to 2013 (%)
Middle Eastern	1,395	1,701	21.9	10,710	12,864	20.1
Latin American	252	393	56.0	3,090	5,820	88.3
African	357	585	63.9	4,800	6,303	31.3
Total people specifying ethnicity	110,685	122,604	10.8	1,239,051	1,331,427	7.5

Notes:

This table shows all MELAA groups within Howick local board area at Level 3 classification as at 2013.

People could choose more than one ethnicity and groups are not exclusive. Percentages will add to more than 100.

### 3.7 Large numbers of Sinitic language speakers

English was the most common language in which people could hold a conversation about everyday things, with 1,233,633 speakers in Auckland (95.6% of the usually resident population) and 111,021 speakers in Howick (93.0%).

Although Samoan was the next most common language in Auckland (58,200 speakers; 4.5% of usual residents), this language was relatively uncommon in Howick (1,362 speakers; 1.1% of usual residents). Māori was also less common in Howick (837 speakers; 0.7% of usual residents) than in Auckland as a whole (30,927 speakers; 2.4%).

Sinitic (Chinese) languages, including Northern Chinese, Yue and other Sinitic languages were much more common in Howick than in Auckland as a whole.

**Table 7: Top 10 languages spoken, 2013**

	Howick		Auckland	
	Count	%	Count	%
English	111,021	93.0	1,233,633	95.6
Northern Chinese <sup>(1)</sup>	9,255	7.8	38,781	3.0
Yue <sup>(2)</sup>	8,472	7.1	30,681	2.4
Sinitic not further defined <sup>(3)</sup>	6,066	5.1	30,282	2.3
Hindi	5,205	4.4	49,518	3.8
Afrikaans	3,261	2.7	13,992	1.1
Korean	2,325	1.9	19,365	1.5
Tagalog	2,109	1.8	14,925	1.2
Samoan	1,362	1.1	58,200	4.5
French	1,017	0.9	17,433	1.4
Total people stated	121,662	139.9	1,316,262	134.1
Not elsewhere included	5,658		101,961	
Total people	127,125		1,415,550	

Notes:

- 1) Includes Mandarin
- 2) Includes Cantonese
- 3) Includes Chinese languages not further defined

People could identify more than one language so percentages will not add to 100.

Percentages calculated excluding not elsewhere included and too young to talk responses.

## 4.0 Age

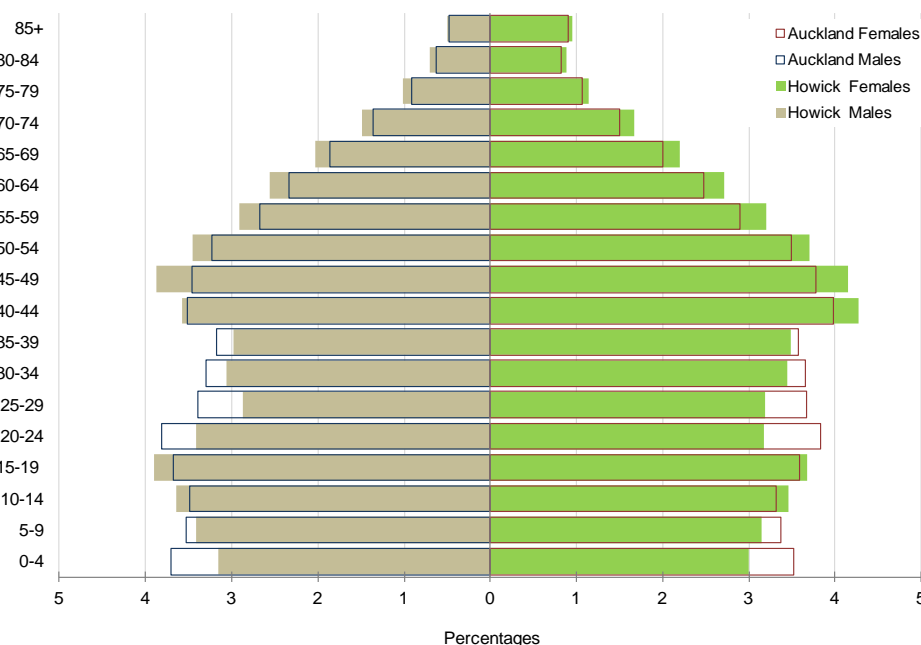
In 2013 the median age of residents of Howick was 37.8 years, up from 35.9 years in 2006. The median age for Auckland as a whole in 2013 was 35.1 years.

### 4.1 High proportions of those aged over 40 in Howick

As the age-sex structure below indicates, in 2013 Howick had slightly higher proportions of residents in each age group 40 years and over than Auckland as a whole (see Figure 3). There is also a small bulge in the 10-19 years age group.

Proportions of children (aged 0-14) were slightly lower in Howick than in Auckland as a whole (19.8% compared to 20.9%). Proportions of older people (aged 65 and over) were slightly higher in Howick than in Auckland as a whole (12.6% compared to 11.5%).

**Figure 3: Age-sex structure, Howick compared with Auckland, 2013**

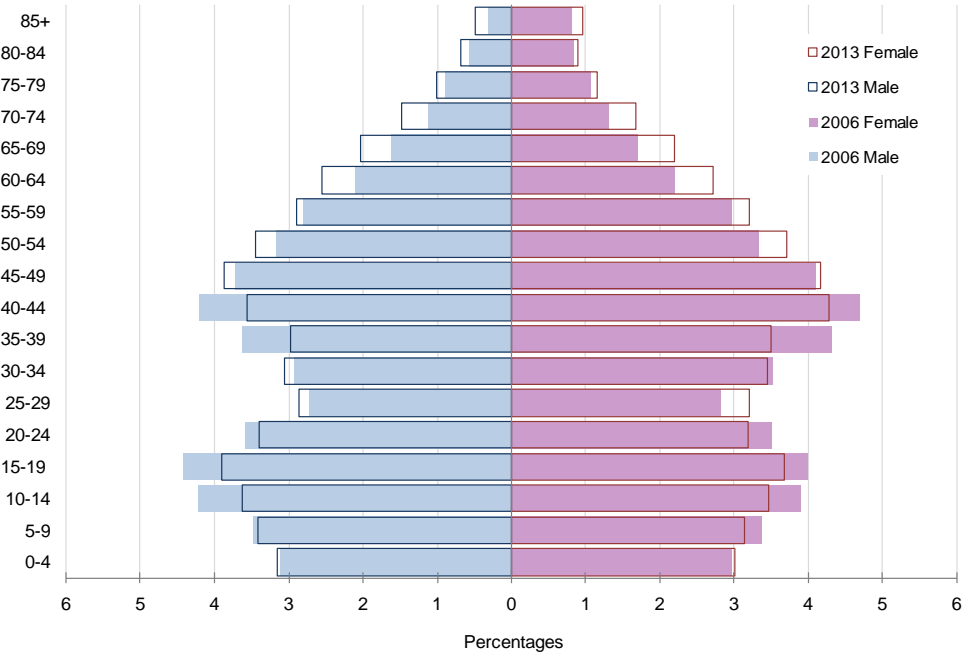


### 4.2 Howick's older population is growing

Auckland experienced a 26.9 per cent increase in the number of usual residents who were aged 65 years and over between 2006 and 2013, equating to an additional 34,600 older people since 2006. This is a part of a long-term national and global trend of population ageing that has arisen as people live longer and fertility rates decline. Ageing means that there will be numerically and proportionately more people in older age groups over the next few decades. As the age-sex structure (Figure 4) shows, this is also occurring in Howick.

The number of usual residents aged 65 years and over in Howick increased between 2006 and 2013, from 11,604 to 15,993 (37.8% growth).

**Figure 4: Age-sex structure, Howick, 2006 and 2013**



## 5.0 Work and income

This section describes the work and labour force status of adults (usual residents aged 15 years and over). People were defined as employed if they worked for one hour or more for pay or profit, or without pay in a family farm, business, or professional practice, or if they had a job but were not at work for some reason.

People were defined as 'not in the labour force' if they were not employed and were not actively seeking work. This includes students, people caring for children or other family members, retired people, and people who were unable to work for some reason such as illness or disability.

The unemployment rate is the number of people aged 15 years and over who did not have a paid job, were available for work, and were actively seeking work, expressed as a percentage of the labour force. Please note that the official unemployment rate in New Zealand is calculated by Statistics New Zealand using the quarterly Household Labour Force Survey. Also, the data presented here masks fairly significant variation in unemployment rates between 2006 and 2013, particularly following the Global Financial Crisis (GFC).

### 5.1 High proportions of Howick residents employed

At the time of the 2013 Census, there were 650,610 employed adults in Auckland as a whole and 61,881 in Howick. In Auckland, those who were employed made up 61.5 per cent of adults, down from 64.7 per cent in 2006. In Howick the proportion of adults who were employed was slightly higher at 62.7 per cent, but had declined from 65.9 per cent in 2006.

**Table 8: Work and labour force status,<sup>(1)</sup> for the census usually resident population count aged 15 and over, 2006 and 2013**

	Howick				Auckland			
	2006		2013		2006		2013	
	Count	%	Count	%	Count	%	Count	%
Employed full-time	45,210	51.3	48,756	49.4	496,071	51.1	513,204	48.5
Employed part-time	12,852	14.6	13,125	13.3	132,777	13.7	137,406	13.0
Unemployed <sup>(2)</sup>	2,820	3.2	4,215	4.3	37,305	3.8	57,483	5.4
Not in labour force	27,171	30.9	32,568	33.0	305,358	31.4	349,923	33.1
Total people stated	88,056	100.0	98,667	100.0	971,514	100.0	1,058,016	100.0
Work and labour force status unidentifiable	1,554		3,264		44,334		61,179	
Total people	89,610		101,931		1,015,848		1,119,195	
<b>Sub-totals</b>								
Total people in labour force	60,885	69.1	66,096	67.0	666,156	68.6	708,093	66.9
Total people employed	58,059	65.9	61,881	62.7	628,851	64.7	650,610	61.5
<i>Unemployment rate<sup>(3)</sup></i>		4.6		6.4		5.6		8.1

Notes:

- 1) A person's work and labour force status in the seven days ending 5 March 2006 and 3 March 2013.
- 2) The number and proportion of adults who are unemployed.
- 3) The proportion of adults *in the labour force* who are unemployed.

All percentages are calculated as a proportion of 'Total people stated', except for the unemployment rate which is calculated as a proportion of 'Total people in labour force'.

The unemployment rate has increased since 2006, from 5.6 per cent (of those in the labour force) to 8.1 per cent in Auckland, and from 4.6 per cent to 6.4 per cent in Howick. Changes in employment and unemployment reflect the economic slowdown of recent years.

In 2013, one third of adults in both Auckland and Howick were not in the labour force.

## **5.2 Rise in employment for people aged 65 years and over**

Among those aged 65 years and over, there was an increase in the number and proportion who were employed between 2006 and 2013, from 1,914 (16.7% of all aged 65 years and over) in 2006 to 3,198 (20.5%) in 2013. This increase in numbers of older people who were employed was found across most local board areas (with the exception of Great Barrier).

## **5.3 Slight increase in unemployment for young people**

In Auckland, the unemployment rate for young people (those aged 15-24 years) rose between 2006 and 2013 from 14.3 per cent (16,986 usual residents) to 20.3 per cent (22,815 usual residents). In Howick, the unemployment rate for young people increased from 12.6 per cent (1,392 usual residents) in 2006 and to 17.8 per cent (1,746 usual residents) in 2013.

There was also a general decline in young people's labour force participation between 2006 and 2013. In Auckland, 56.7 per cent of young people were in the labour force in 2013 down from 62.7 per cent in 2006. In Howick, 56.4 per cent of young people were in the labour force in 2013 down from 63.8 per cent in 2006.

## **5.4 Median incomes relatively high**

In 2013, the median personal income for adults (people aged 15 years and over) in Howick was \$30,300 per annum – higher than that for Auckland as a whole at \$29,600.

The proportion of the population reporting a personal income over \$100,000 was 6.9 per cent in Howick and 7.4 per cent in Auckland as a whole. The proportion of the population reporting a personal income of \$20,000 or less was 39.0 per cent in both Howick and Auckland as a whole.

The median household income in Howick was \$84,500 per annum, compared to \$76,500 in Auckland as a whole.



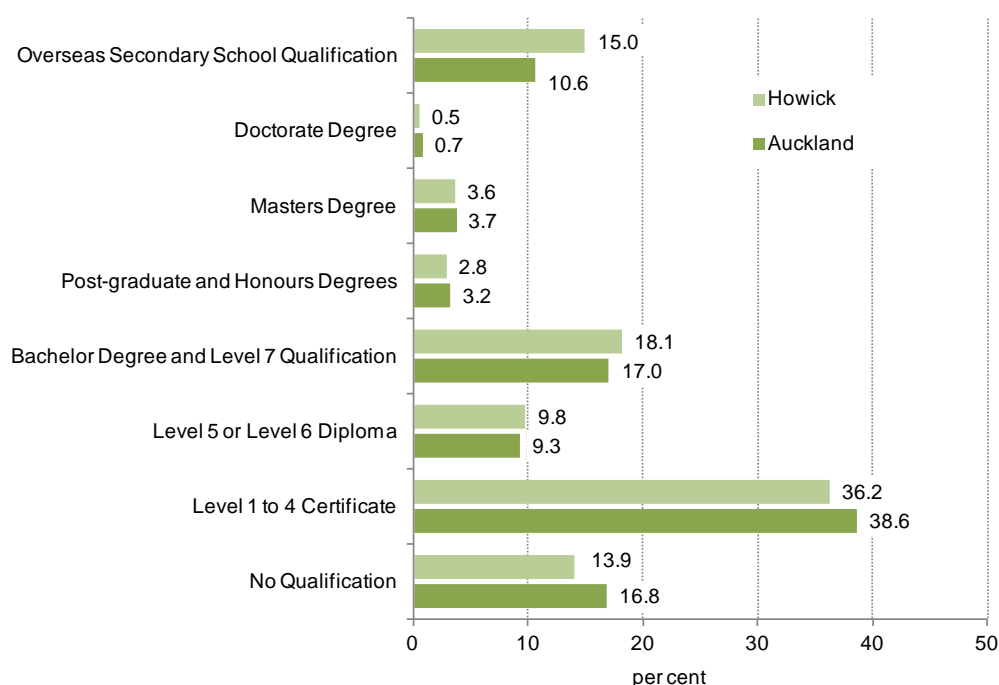
## 6.0 Formal education qualifications

Statistics New Zealand identify a formal qualification as a formally recognised award for educational or training attainment that requires at least three months of full-time study (or the part-time equivalent).

### 6.1 Overseas secondary school qualifications more prevalent

The graph below shows the highest education qualifications of people aged 15 years and over in Auckland as a whole and in Howick. It indicates that overseas secondary school qualifications were a more prevalent form of highest qualification in Howick (15.0%) than in Auckland as a whole (10.6%). The proportion of adults with no qualifications was lower in Howick (13.9%) than in Auckland as a whole (16.8%).

**Figure 5: Highest education qualification for people aged 15 and over, 2013**



### 6.2 Increase in levels of qualifications in Howick

The number and proportion of adults aged 15 years and over with higher educational qualifications is increasing in Auckland as a whole, and in Howick. In 2013, 83.2 per cent of Auckland residents aged 15 years and over had a formal qualification, up from 79.7 per cent in 2006. Slightly higher proportions of adults in Howick had a formal qualification – 86.1 per cent in 2013, up from 84.3 per cent in 2006.

Nearly a quarter (24.6%) of adults in Auckland had a university degree or equivalent in 2013, up from 19.9 per cent in 2006. The percentage of those with a university degree or equivalent in Howick was similar, increasing to 25.1 per cent in 2013 from 20.0 per cent in 2006.

## 7.0 Households and dwellings

Statistics New Zealand define a 'household' as either one person who usually resides alone, or two or more people who usually reside together and share facilities (such as eating facilities, cooking facilities, bathroom facilities, and a living area), in a private dwelling. A family is defined as a couple, with or without child(ren), or one parent and their child(ren), all of whom have usual residence together in the same household. The children do not have partners or children of their own living in the household. A household can contain one or more families, or can contain no families at all.

A dwelling is defined as a structure, part of a structure, or group of structures that is used, or intended to be used as a place where people reside. It may be permanent or temporary and may function as private or non-private (eg. providing short- or long-term communal or transitory type accommodation).

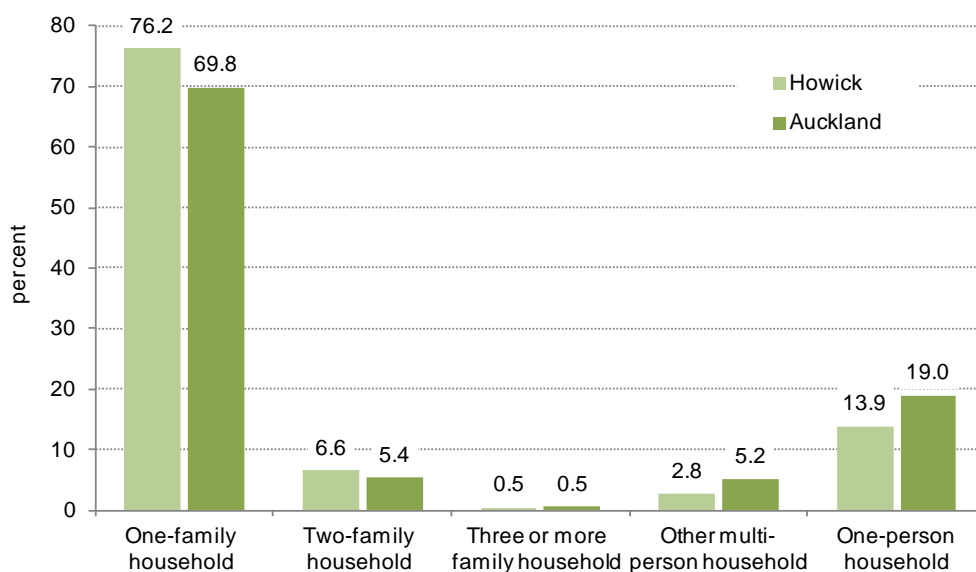
At the 2013 Census, a total of 40,932 households and 41,043 occupied private dwellings were recorded in Howick.

### 7.1 One-family households prevalent in Howick

In 2013, one-family households were the most common type of household in Howick, making up 76.2 per cent of households. In Auckland as a whole, one-family households constituted 69.8 per cent of households. All other household types were less prevalent in Howick than in Auckland as a whole.

One-person households were the second most prevalent household type in Howick constituting 13.9 per cent of households.

**Figure 6: Household composition, 2013**



## 7.2 Increase in multi-family households

Between 2006 and 2013 there was an increase in numbers of all household types in Howick (other than other multi-person households). The most significant growth occurred in multi-family households. For example, two-family households increased from 1,731 (4.7% of households) in 2006 to 2,652 (6.6%) in 2013.

Although numbers of one-family households increased, they declined as a proportion of households from 77.7 per cent in 2006.

**Table 9: Changes in household composition, 2006 to 2013**

	Howick		Auckland	
	Change 2006 to 2013 (Count)	Change 2006 to 2013 (%)	Change 2006 to 2013 (Count)	Change 2006 to 2013 (%)
One-family household *	2,229	7.8	20,496	6.9
Two-family household *	921	53.2	6318	34.5
Three or more family household *	81	62.8	747	44.4
Other multi-person household	-24	-2.1	912	4.0
One-person household	447	8.7	3660	4.4
Total households stated	3,657	10.0	32,124	7.6
Household composition unidentifiable	318	82.8	3105	26.7
Total households	3,975	10.8	35,232	8.1

Note:

\* With or without other people.

## 7.3 Separate houses prevalent in Howick

In 2013, three quarters (74.7%) of the occupied dwellings in Auckland were separate houses. This proportion was higher in Howick, at 80.9 per cent. Attached dwellings – i.e., two or more flats/ units/ townhouses/ apartments/ houses joined together – were less prevalent in Howick at 18.9 per cent than in Auckland as a whole at 24.8 per cent.

There have been increases in Howick in the numbers of dwellings in each dwelling type between 2006 and 2013. However, growth in attached dwellings has been more significant than growth in separate houses.

## 7.4 Unoccupied dwellings less prevalent in Howick

The number of unoccupied dwellings in Howick increased from 1,674 in 2006 to 1,866 in 2013. However, the proportion of dwellings in this local board that were unoccupied remained constant at 4.3 per cent.<sup>2</sup>

Unoccupied dwellings were more prevalent in areas with high numbers of holiday homes such as Rodney, Waiheke, Waitemata and Great Barrier, than in Auckland as a whole where they constituted only 6.6 per cent of all dwellings in 2013.

<sup>2</sup> Note that these figures do not include dwellings under construction.

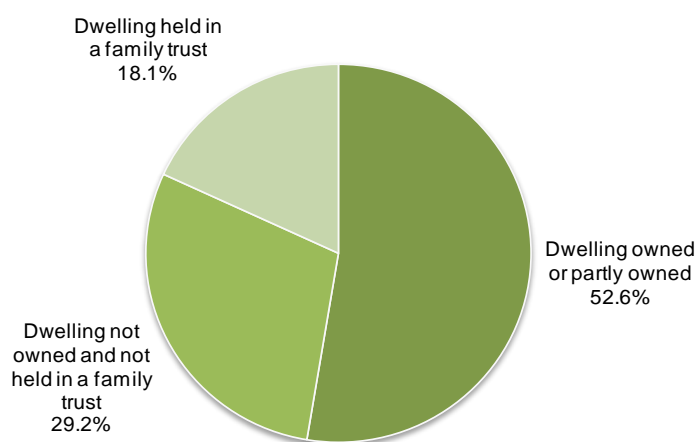
## 8.0 Home ownership

Census data provides information on ownership level of the dwelling by the people who live in it, as at the time of Census. Census does not provide information on ownership of any other dwellings or properties by those people.

### 8.1 Home ownership relatively high in Howick

In 2013, 70.7 per cent of households in private occupied dwellings in Howick owned the dwelling, or held that dwelling in a family trust. This home ownership rate (this includes both dwellings owned by occupants and those held in family trusts) was higher than in Auckland as a whole (61.5%).

**Figure 7: Tenure in Howick, 2013**



In line with long-term trends, rates of home ownership declined in Howick and Auckland from 2006 rates of 73.7 per cent and 63.8 per cent, respectively. As Table 10 indicates, the most significant growth was in dwellings not owned and not held in a family trust as well as dwellings held in a family trust.

**Table 10: Changes in tenure, 2006 to 2013**

	Howick			Auckland		
	2006	2013	Change 2006 to 2013 (%)	2006	2013	Change 2006 to 2013 (%)
Owned or part owned	20,604	20,652	0.2	204,711	201,411	-1.6
Held in a family trust	5,571	7,116	27.7	52,791	67,533	27.9
Not owned and not held in a family trust	9,366	11,475	22.5	145,953	168,708	15.6
Total households stated	35,538	39,240	10.4	403,455	437,649	8.5
Not elsewhere included	1,416	1,692	19.5	30,810	31,851	3.4
Total households	36,954	40,932	10.8	434,265	469,500	8.1

# Summary Data

	Howick	Auckland	New Zealand
<b>Population</b>			
2013	127,125	1,415,550	4,242,048
2006	113,505	1,304,958	4,027,947
2001	93,096	1,160,271	3,737,280
<b>Growth 2006 to 2013: Numbers</b>	13,620	110,592	214,101
<b>Growth 2006 to 2013: %</b>	12.0	8.5	5.3
<b>Age: Numbers</b>			
Under 15 years	25,194	296,358	865,632
15 to 64 years	85,938	956,034	2,769,387
65 years and over	15,993	163,152	607,032
Total	127,125	1,415,544	4,242,051
<b>Age: %</b>			
Under 15 years	19.8	20.9	20.4
15 to 64 years	67.6	67.5	65.3
65 years and over	12.6	11.5	14.3
Total	100.0	100.0	100.0
<b>Ethnicity: Numbers</b>			
European	67,446	789,306	2,969,391
Māori	6,324	142,767	598,602
Pacific Peoples	5,631	194,958	295,941
Asian	47,511	307,233	471,708
MELAA	2,673	24,945	46,956
Other	1,314	15,639	67,752
Total people who stated an ethnicity	122,604	1,331,427	4,011,402
<b>Ethnicity: %</b>			
European	55.0	59.3	74.0
Māori	5.2	10.7	14.9
Pacific Peoples	4.6	14.6	7.4
Asian	38.8	23.1	11.8
MELAA	2.2	1.9	1.2
Other	1.1	1.2	1.7
Total people who stated an ethnicity	106.8	110.8	110.9
<b>Highest education qualification: numbers (of those aged 15 years and over)</b>			
No qualification	13,143	166,785	628,377
Secondary qualification (Level 1 to 4)	34,125	383,082	1,291,335
Level 5 or Level 6 Diploma	9,213	91,923	278,091
Bachelor degree or Level 7 qualification	17,067	168,924	408,444
Post-graduate and Honours degree	2,685	31,854	86,598
Masters degree	3,408	36,792	83,949
Doctorate degree	480	7,428	22,317
Overseas secondary school qualification	14,097	105,201	201,519
Total people stated	94,221	991,986	3,000,633

	Howick	Auckland	New Zealand
<b>Highest education qualification: % (of those aged 15 years and over)</b>			
No qualification	13.9	16.8	20.9
Secondary qualification (Level 1 to 4)	36.2	38.6	43.0
Level 5 or Level 6 Diploma	9.8	9.3	9.3
Bachelor degree or Level 7 qualification	18.1	17.0	13.6
Post-graduate and Honours degree	2.8	3.2	2.9
Masters degree	3.6	3.7	2.8
Doctorate degree	0.5	0.7	0.7
Overseas secondary school qualification	15.0	10.6	6.7
Total people stated	100.0	100.0	100.0
<b>Work and labour force status: % (of those aged 15 years and over)</b>			
Employed full time	49.4	48.5	48.0
Employed part time	13.3	13.0	14.3
Unemployed	4.3	5.4	4.8
Not in the labour force	33.0	33.1	32.9
Total	100.0	100.0	100.0
<b>Median personal income \$</b>	\$30,300	\$29,600	\$28,500
<b>Number of occupied dwellings</b>			
Private dwellings	41,043	472,044	1,561,956
Non-private dwellings	78	1,407	8,739
Total occupied dwellings	41,121	473,451	1,570,698
<b>Number of households</b>			
2013	40,932	469,500	1,549,890
<b>Household composition: numbers</b>			
One-family household #	30,648	317,619	1,030,497
Two-family household #	2,652	24,612	47,433
Three or more family household #	210	2,430	3,588
Other multi-person household	1,128	23,580	72,384
One person household	5,589	86,547	355,242
Total households stated	40,230	454,782	1,509,144
<b>Household composition: %</b>			
One-family household	76.2	69.8	68.3
Two-family household	6.6	5.4	3.1
Three or more family household	0.5	0.5	0.2
Other multi-person household	2.8	5.2	4.8
One person household	13.9	19.0	23.5
Total households stated	100.0	100.0	100.0
<b>Median household income \$</b>	\$84,500	\$76,500	\$63,800
<b>Tenure: %</b>			
Dwelling owned or partly owned	52.6	46.0	49.9
Dwelling held in a family trust	18.1	15.4	14.8
Dwelling not owned and not held in a family trust	29.2	38.5	35.2
Total households stated	100.0	100.0	100.0

# With or without other people

Note that in line with Statistics New Zealand conventions, the calculation of percentages excludes 'not elsewhere included' responses.