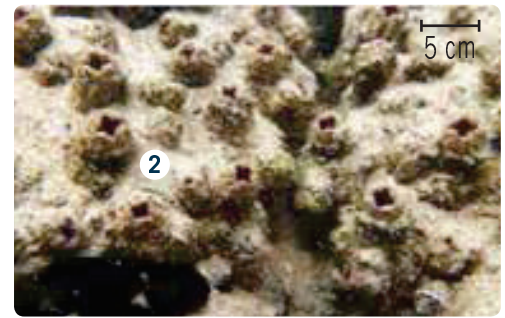


PYURA

Pyura doppelgangera

Key features

- 1 Flattened upper surface surrounded by a ridge with two siphons projecting slightly from the centre
- 2 Hard, sac-like body with brown or reddish-brown leathery skin, often incorporating sand and shell fragments



- 3 Adults 1.5–6 cm high and 3–5 cm in diameter, squat and globular in shape
- 4 Colonies may form a dense mat, which may be visible at low tide



Habitat

- Rocky intertidal and shallow subtidal
- Grows on hard surfaces in soft sediments

Native species that look similar:

- No native species look similar to pyura

Impact

- Forms dense populations or mats, and can survive over a wide geographical range
- Could displace important native New Zealand species, including greenshell mussels

