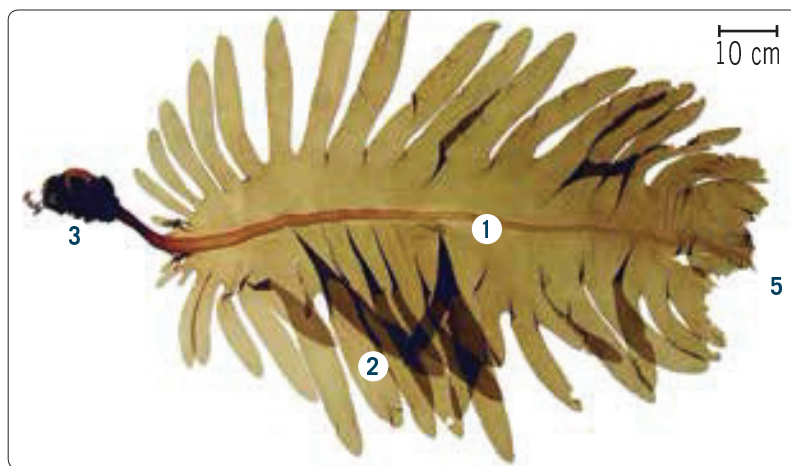


WAKAME/UNDARIA

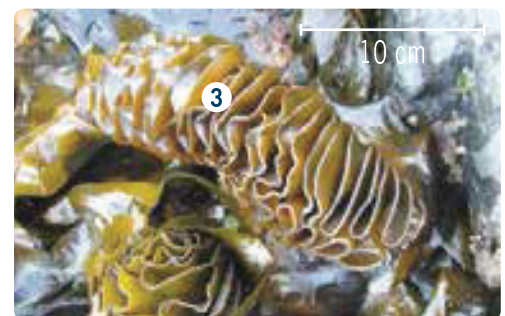
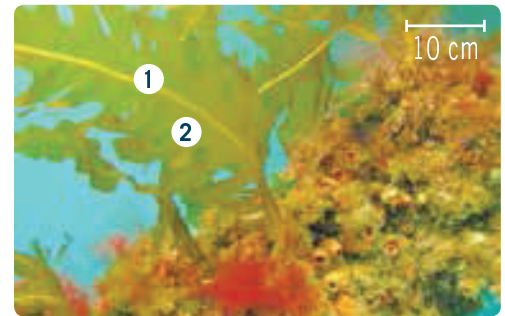
Undaria pinnatifida

Key features

- 1 Strap-like midrib in plants larger than 10 cm
- 2 Smooth, thin, laminar blade, with side lobes, that starts just above the holdfast, or above the frilly reproductive tissue in mature plants



- 3 Base of mature plant is frilly (reproductive tissue), with a root-like holdfast
- 4 Adult plants brown to yellowish, up to 3 m tall
- 5 Tops of mature plants are often eroded



Habitat

- Intertidal to 40 m depth
- Wharves, pontoons and buoys
- Rocky coasts and reefs
- Boat hulls
- Sheltered to exposed environments
- Grows well in polluted or nutrient-enriched waters

Impact

- Very fast growing and can form dense colonies displacing native and fisheries species
- Fouls boats, aquaculture installations and other marine structures

Report if found outside known locations
0800 80 99 66

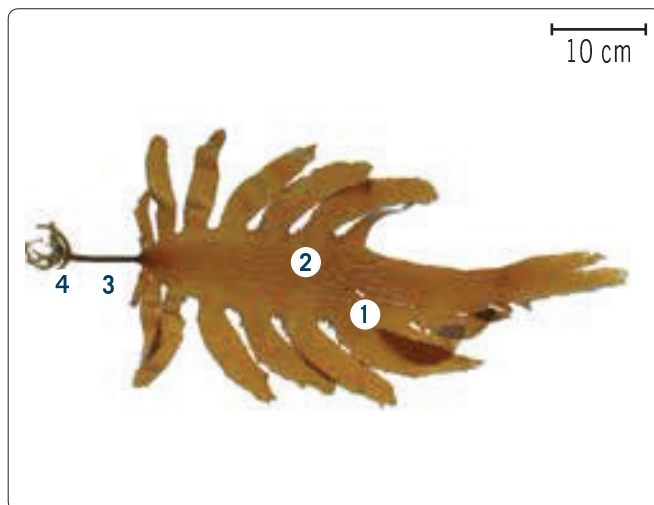


NATIVE SPECIES THAT LOOK SIMILAR



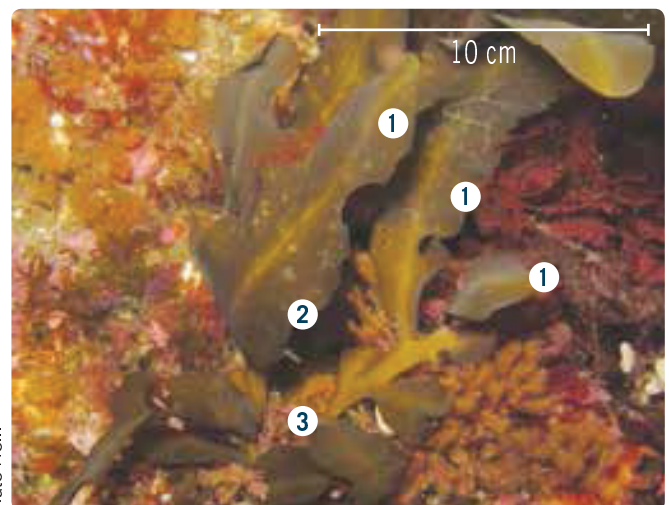
How to differentiate *Undaria pinnatifida* from:

Ecklonia radiata ECKLONIA



- 1 *Ecklonia* has rough, leathery blade, often with many small, raised bumps; *Undaria* has smooth, thin and fragile blades
- 2 *Ecklonia* has no midrib (Note: plants are difficult to differentiate before this character develops in *Undaria* at about 10 cm length)
- 3 *Ecklonia* has a cylindrical trunk-like stipe. *Undaria* has a flattened, strap-like stipe
- 4 *Ecklonia* has no frilly reproductive tissue at base

Carpophyllum flexuosum



- 1 *Carpophyllum* has multiple ribbed leaves; *Undaria* has only a single midrib and blade
- 2 *Carpophyllum* has stiff, tough, leathery leaves
- 3 *Carpophyllum* has no frilly base

To report suspected marine pests or diseases call
0800 80 99 66